

ELDERLY POPULATION BY REGION

In all OECD countries, populations aged 65 years and over have dramatically increased over the last decades, both in size and as a percentage of total population. Elderly people, it turns out, tend to be concentrated in few areas within each country, which means that a small number of regions will have to face a number of specific social and economic challenges raised by ageing population.

Definition

The elderly population is the number of inhabitants of a given region aged 65 or older. The population can be either the average annual population or the population at a specific date during the year considered.

The elderly dependency rate is defined as the ratio between the elderly population and the working age (15-64 years) population.

Overview

In most OECD countries the population is ageing. Due to higher life expectancy and low fertility rates, the elderly population (those aged 65 years and over) accounts for almost 16% of the OECD population in 2014, up from just over 13% 14 years earlier. The proportion of elderly population is remarkably lower in the emerging economies (South Africa, Brazil and China) and Mexico, Turkey, Chile and Israel.

The elderly population in OECD countries has increased more than three times faster than the total population between 2000 and 2014. The rate of ageing between different parts of a country can be quite different, as an increase in the geographic concentration of the elderly may arise from inward migration of the elderly or by ageing “in place” because the younger generations have moved out of the regions.

The ratio of the elderly to the working age population, the elderly dependency rate, is steadily growing in OECD countries. The elderly dependency rate gives an indication of the balance between the retired and the economically active population. In 2014 this ratio was 24% in OECD countries, with substantial differences between countries (42% in Japan versus 11% in Turkey). Differences among regions within the same countries are also large. The higher the regional elderly dependency rate, the higher the challenges faced by regions in generating wealth and sufficient resources to provide for the needs of the population. Concerns may arise about the financial self-sufficiency of these regions to generate taxes to pay for the services for the elderly.

Comparability

As for the other regional statistics, the comparability of elderly population data is affected by differences in the definition of the regions and the different geography of rural and urban communities, both within and among countries. In order to better show the rural/urban divide, elderly dependency rates are presented for rural and urban regions, but not for intermediary regions, which explains that for some countries, the country average can be outside the rural/urban range.

All the regional data shown here refer to small regions with the exception of Brazil, China, India, Russia and South Africa.

Sources

- OECD (2013), *OECD Regions at a Glance*, OECD Publishing.

Further information

Analytical publications

- OECD (2015), *Ageing and Employment Policies*, OECD Publishing.
- OECD (2014), *OECD Regional Outlook*, OECD Publishing.
- OECD (2011), *The Future of Families to 2030*, OECD Publishing.
- Oliveira Martins J., et al. (2005), “The Impact of Ageing on Demand, Factor Markets and Growth”, *OECD Economics Department Working Papers*, No. 420.

Statistical publication

- OECD (2014), *Society at a Glance: OECD Social Indicators*, OECD Publishing.

Online databases

- *OECD Regional Database*.

Websites

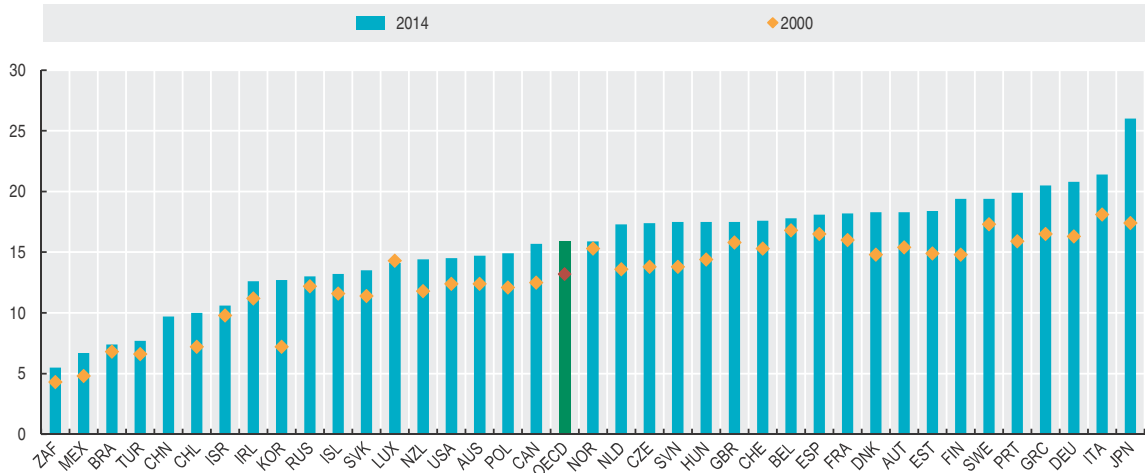
- *Regions at a Glance Interactive*, rag.oecd.org.
- *Regional statistics and indicators*, www.oecd.org/gov/regional/statisticsindicators.



ELDERLY POPULATION BY REGION

Elderly population

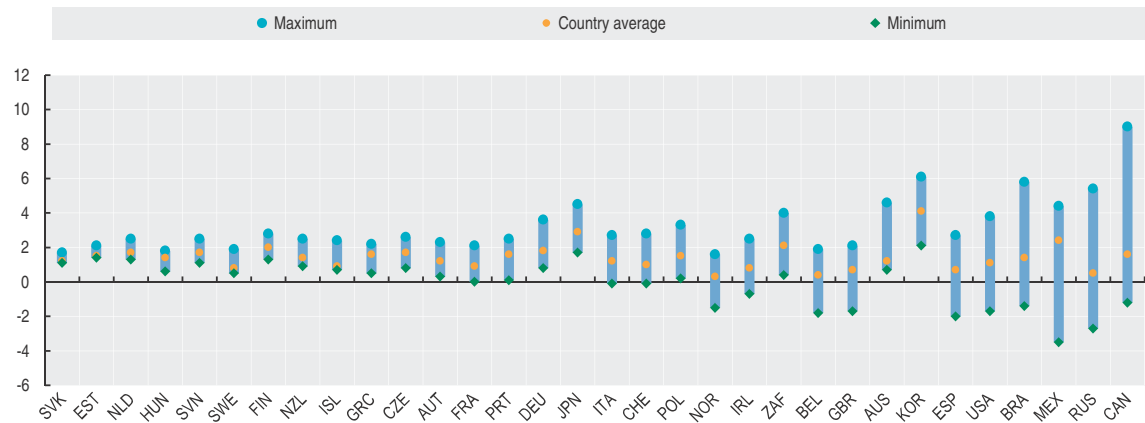
As a percentage of total population, 2000 and 2014



1 2 <http://dx.doi.org/10.1787/888933334816>

Regional elderly population

Average annual growth in percentage, 2000-14



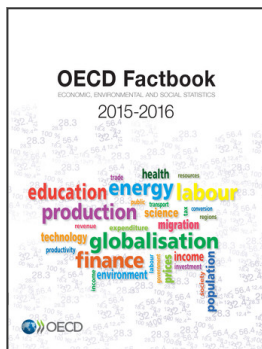
1 2 <http://dx.doi.org/10.1787/888933335744>

Elderly dependency rate in urban and rural regions

Percentage, 2014



1 2 <http://dx.doi.org/10.1787/888933335890>



From:
OECD Factbook 2015-2016
Economic, Environmental and Social Statistics

Access the complete publication at:
<https://doi.org/10.1787/factbook-2015-en>

Please cite this chapter as:

OECD (2016), "Elderly population by region", in *OECD Factbook 2015-2016: Economic, Environmental and Social Statistics*, OECD Publishing, Paris.

DOI: <https://doi.org/10.1787/factbook-2015-4-en>

This work is published under the responsibility of the Secretary-General of the OECD. The opinions expressed and arguments employed herein do not necessarily reflect the official views of OECD member countries.

This document and any map included herein are without prejudice to the status of or sovereignty over any territory, to the delimitation of international frontiers and boundaries and to the name of any territory, city or area.

You can copy, download or print OECD content for your own use, and you can include excerpts from OECD publications, databases and multimedia products in your own documents, presentations, blogs, websites and teaching materials, provided that suitable acknowledgment of OECD as source and copyright owner is given. All requests for public or commercial use and translation rights should be submitted to rights@oecd.org. Requests for permission to photocopy portions of this material for public or commercial use shall be addressed directly to the Copyright Clearance Center (CCC) at info@copyright.com or the Centre français d'exploitation du droit de copie (CFC) at contact@cfcopies.com.