

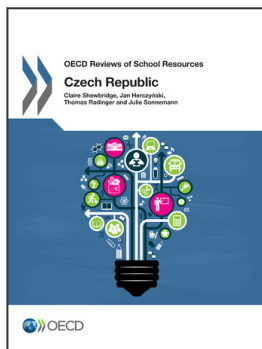
## ANNEX C

## Visit programme

Tuesday, 26 May 2015, Prague	
08:00-08:30	Meeting with National Co-ordinator
08:30-09:00	Ministry of Education: general meeting <ul style="list-style-type: none"> <li>• General Director of Section of Policy Co-ordination</li> <li>• Director of Department of Strategy and European Affairs</li> <li>• Researchers, University of Economics (authors of CBR)</li> </ul>
09:00-10:00	National Institute for Further Education (NIDV) <ul style="list-style-type: none"> <li>• Director</li> </ul>
10:00-11:00	Ministry of Education: Human Resources <ul style="list-style-type: none"> <li>• Director of Department of School Statistics, Analytics and Information Strategy</li> <li>• Head of Unit of Project Management and Central Agenda</li> <li>• Head of Unit of Further Education and Career System of Teachers</li> </ul>
11:20-12:20	Ministry of Education: Allocation and use of EU funds <ul style="list-style-type: none"> <li>• Operational Programmes Research and Development for Innovation</li> </ul>
12:20-13:20	Ministry of Education: School Network <ul style="list-style-type: none"> <li>• Director of Department of Education System</li> <li>• Head of Unit of Pre-School, Basic and Artistic Education</li> </ul>
13:20-14:20	Official Lunch
14:20-15:20	Ministry of Education: Policies for Equity <ul style="list-style-type: none"> <li>• Director General of Section of Legislation and Law</li> <li>• Director of Department of Legislation</li> <li>• Head of Unit of Prevention and Special Education</li> </ul>
15:20-16:20	Ministry of Education: Budget and Planning <ul style="list-style-type: none"> <li>• General Director of Section of Funding</li> <li>• Director of Department of Budget and Budget Analysis</li> <li>• Director of Department of Internal Audit</li> <li>• Department of Budget Management</li> </ul>
16:20-16:50	Supreme Audit Office (NKÚ) <ul style="list-style-type: none"> <li>• Section of Control</li> </ul>
17:10-18:10	Umbrella Regional organisations <ul style="list-style-type: none"> <li>• President and Vice-President of Union of Towns and Municipalities</li> <li>• Association of Local Autonomies</li> </ul>
Wednesday, 27 May 2015, Prague	
08:30-10:00	Capital City of Prague: general meeting; school network; and funding resources allocation to education <ul style="list-style-type: none"> <li>• Alderman for Education and Social Policy</li> <li>• Director of Department of Schools and Youth</li> <li>• Head of Unit of School Funding</li> </ul>
10:30-13:00	<b>School visit 1: Prague – 8-year <i>gymnasium</i> (Nad Štolou)</b> <ul style="list-style-type: none"> <li>• Management</li> <li>• Teachers</li> <li>• Students</li> <li>• Parents</li> </ul>

14:30-17:00	<b>School visit 2: Prague 5 – Large basic school at Barrandov (V Remízku)</b> <ul style="list-style-type: none"> <li>• Management</li> <li>• Teachers</li> <li>• Students</li> <li>• Parents</li> </ul>
17:20-18:30	Local Municipality (Prague 5): School network and funding; resources allocation to education; social services in education (free meals etc.) <ul style="list-style-type: none"> <li>• Vice-mayor</li> <li>• Department of Schools</li> </ul>
<b>Thursday, 28 May 2015, Ostrava And Kozmice, Moravia-Silesia Region</b>	
08:30-10:00	Moravia-Silesia Region: general meeting; school network and funding; resources allocation to education; social services in education (free meals, etc.) <ul style="list-style-type: none"> <li>• Deputy President of the Region</li> <li>• Deputy Head of Department of Schools, Youth and Sports and head of Unit of Direct Funding</li> <li>• Head of Unit of School Funding</li> <li>• Lawyer, Department of Schools, Youth and Sports</li> </ul>
10:30-13:00	<b>School visit 3: Ostrava – Practical school (Ostrava-Hrabuvka)</b> <ul style="list-style-type: none"> <li>• Management</li> <li>• Teachers</li> <li>• Students</li> <li>• Parents</li> </ul>
14:30-17:00	<b>School visit 4: Ostrava – Pre-school and basic school years 1 to 5 (ZŠ+MŠ Kozmice)</b> <ul style="list-style-type: none"> <li>• Management</li> <li>• Teachers</li> <li>• Students</li> <li>• Parents</li> </ul>
17:20-18:30	Local Municipality (Kozmice): school network and funding; resources allocation to education; social services in education (free meals, etc.) <ul style="list-style-type: none"> <li>• Mayor</li> </ul>
<b>Friday, 29 May 2015, Zlín, Zlín Region</b>	
08:30-10:00	Zlín Region: general meeting; school network and funding; resources allocation to education; social services in education (free meals, etc.)
10:30-13:00	<b>School visit 5, Zlín – <i>gymnasium</i> (Lesní čtvrť)</b> <ul style="list-style-type: none"> <li>• Management</li> <li>• Teachers</li> <li>• Students</li> <li>• Parents</li> </ul>
<b>Monday, 1 June 2015, Ústí Region / Prague</b>	
09:20-10:50	Ústí Region: general meeting; school network and funding; resources allocation to education
11:20-12:30	<b>School Visit 6: Basic (offering special education; former practical school) and secondary school (vocational education and training)</b> <ul style="list-style-type: none"> <li>• Management</li> <li>• Teachers</li> <li>• Students</li> <li>• Parents</li> </ul>
15:30-16:20	Teachers' Unions <ul style="list-style-type: none"> <li>• Head of Unit of Prevention and Special Education, Ministry of Education (instead of Special Pedagogues Association)</li> <li>• President of Association of Teachers in Basic Education</li> <li>• President of Czech and Moravian Trade Union of Workers in Education</li> </ul>
16:20-17:10	School Leader Associations <ul style="list-style-type: none"> <li>• Association of School Leaders in Gymnasia</li> <li>• Association of School Leaders in Basic Education</li> <li>• CZESHA (Union of Schools' Associations in the Czech Republic)</li> <li>• Ferdinand Eder, University of Salzburg</li> </ul>
17:10-17:40	Employers <ul style="list-style-type: none"> <li>• Deputy Head of Unit of European Affairs, Union of Industry</li> <li>• Vice-President of Czech Chamber of Commerce</li> </ul>

17:40-18:10	Private Schools <ul style="list-style-type: none"> <li>● SSSCMS (Association of Private Schools in Bohemia, Moravia and Silesia)</li> <li>● Head of Unit of Church Education (Czech Bishop's Conference)</li> </ul>
<b>Tuesday, 2 June 2015, Prague</b>	
08:00-08:30	Meeting with National Co-ordinator at the Ministry
08:30-09:20	Teacher Educators <ul style="list-style-type: none"> <li>● University of West Bohemia</li> <li>● Charles University in Prague</li> <li>● Masaryk University</li> <li>● University of South Bohemia</li> </ul>
09:20-10:10	Ministry of Finance <ul style="list-style-type: none"> <li>● Culture, Education and R&amp;D Department</li> </ul>
10:10-10:50	National Institute of Education (NÚV) <ul style="list-style-type: none"> <li>● Director</li> </ul>
11:10-11:40	Centre for the Evaluation of Educational Achievement (CERMAT) <ul style="list-style-type: none"> <li>● Director</li> </ul>
11:40-12:10	Czech Statistical Office (ČSÚ) <ul style="list-style-type: none"> <li>● General Director of Section of Demographics and Social Statistics</li> <li>● Director of Department School Statistics</li> <li>● Director of Department of School Statistics, Analytics and Information Strategy</li> </ul>
12:10-12:40	Czech School Inspectorate (ČŠI) <ul style="list-style-type: none"> <li>● Chief School Inspector</li> </ul>
12:40-13:40	Official lunch
13:40-14:40	Inclusive Education (other stakeholders) <ul style="list-style-type: none"> <li>● President of Czech Expert Society for Inclusive Education (ČOSIV)</li> <li>● Deputy Minister for Legislation and Equal Opportunities</li> <li>● Systemic Support for Inclusive Education in the Czech Republic</li> </ul>
14:40-16:10	Seminar with researchers in education <ul style="list-style-type: none"> <li>● Charles University in Prague</li> <li>● Masaryk University</li> </ul>
16:30-17:40	Final Delivery by Review Team: Preliminary Impressions



**From:**  
**OECD Reviews of School Resources: Czech Republic 2016**

**Access the complete publication at:**  
<https://doi.org/10.1787/9789264262379-en>

**Please cite this chapter as:**

Shewbridge, Claire, *et al.* (2016), "Visit programme", in *OECD Reviews of School Resources: Czech Republic 2016*, OECD Publishing, Paris.

DOI: <https://doi.org/10.1787/9789264262379-12-en>

This work is published under the responsibility of the Secretary-General of the OECD. The opinions expressed and arguments employed herein do not necessarily reflect the official views of OECD member countries.

This document and any map included herein are without prejudice to the status of or sovereignty over any territory, to the delimitation of international frontiers and boundaries and to the name of any territory, city or area.

You can copy, download or print OECD content for your own use, and you can include excerpts from OECD publications, databases and multimedia products in your own documents, presentations, blogs, websites and teaching materials, provided that suitable acknowledgment of OECD as source and copyright owner is given. All requests for public or commercial use and translation rights should be submitted to [rights@oecd.org](mailto:rights@oecd.org). Requests for permission to photocopy portions of this material for public or commercial use shall be addressed directly to the Copyright Clearance Center (CCC) at [info@copyright.com](mailto:info@copyright.com) or the Centre français d'exploitation du droit de copie (CFC) at [contact@cfcopies.com](mailto:contact@cfcopies.com).