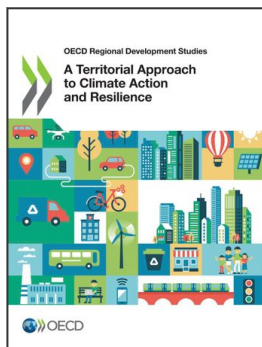


Abbreviations and acronyms

| | |
|--------------------------|---|
| AFOLU | Agriculture, forestry and other land use |
| C40 | C40 Cities Climate Leadership Group |
| CDP | Carbon Disclosure Project |
| CO₂-eq | Carbon Dioxide Equivalent |
| COFOG | Classification of the Functions of Government |
| COVID-19 | Coronavirus disease 2019 |
| CUT | Coalition for Urban Transformation |
| DG REGIO | Directorate-General for Regional and Urban Policy |
| EBRD | European Bank for Reconstruction and Development |
| EC | European Commission |
| EDGAR | Emissions Database for Global Atmospheric Research |
| EEA | European Economic Area |
| ESC | Emerging and Sustainable Cities Initiative |
| EU | European Union |
| FUA | Functional Urban Area |
| FWI | Fire Weather Index |
| GlobalABC | Global Alliance for Buildings and Construction |
| GCoM | Global Covenant of Mayors for Climate & Energy |
| GHG | Greenhouse gas |
| GHS | Global Human Settlement |
| GIZ | <i>Deutsche Gesellschaft für Internationale Zusammenarbeit</i> , German Agency for International Co-operation |
| GPC | GHG Protocol for Cities |
| GSF | Green space factor |
| ICLEI | ICLEI-Local Governments for Sustainability |
| IDB | Inter-American Development Bank |
| IEA | International Energy Agency |
| IFCMA | Inclusive Forum of Carbon Mitigation Approaches |
| IPAC | International Programme for Action on Climate |
| IPCC | Intergovernmental Panel on Climate Change |
| ISO | International Organization for Standardization |
| JRC | Joint Research Centre |
| LT-LEDS | Long-term low emissions development strategies |
| LULC | Land use and land cover |

| | |
|---------------|---|
| MLIT | Ministry of Land, Infrastructure and Transport of Japan |
| NAP | National Adaptation Plan |
| NAS | National Adaptation Strategy |
| NbS | Nature-based Solution |
| NUP | National Urban Policy |
| NDC | Nationally Determined Contribution |
| NGO | Non-Governmental Organisation |
| NOAA | National Oceanic and Atmospheric Administration |
| NZE | Net-Zero Emissions |
| PSR | Pressure-State-Response Approach |
| PPM | Parts per million |
| RACA | Rural Agenda for Climate Action |
| REN21 | Renewables in Cities 2021 |
| SDGs | Sustainable Development Goals |
| SECAP | Sustainable Energy and Climate Action Programme |
| SURGe | Sustainable Urban Resilience for the Next Generation |
| SUV | Sport-utility vehicle |
| TACAR | Territorial approach to climate action and resilience |
| UCLG | United Cities and Local Governments |
| UN | United Nations |
| UNDRR | United Nations Office for Disaster Reduction |
| UNEP | United Nations Environment Programme |
| UNFCCC | United Nations Framework Conference on Climate Change |
| UTCI | Universal Therman Climate Index |
| USF | Urban Sustainability Framework |
| WWF | World Wildlife Fund |



From:
A Territorial Approach to Climate Action and Resilience

Access the complete publication at:

<https://doi.org/10.1787/1ec42b0a-en>

Please cite this chapter as:

OECD (2023), "Abbreviations and acronyms", in *A Territorial Approach to Climate Action and Resilience*, OECD Publishing, Paris.

DOI: <https://doi.org/10.1787/20747e77-en>

This document, as well as any data and map included herein, are without prejudice to the status of or sovereignty over any territory, to the delimitation of international frontiers and boundaries and to the name of any territory, city or area. Extracts from publications may be subject to additional disclaimers, which are set out in the complete version of the publication, available at the link provided.

The use of this work, whether digital or print, is governed by the Terms and Conditions to be found at <http://www.oecd.org/termsandconditions>.