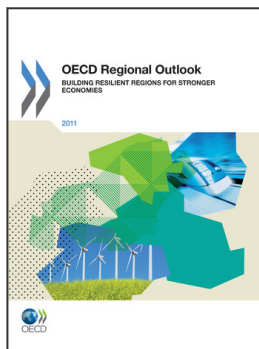


## Acknowledgements

The OECD *Regional Outlook* was co-ordinated and supervised by Joaquim Oliveira Martins. It was prepared by the Regional Development Policy Division of the Directorate for Public Governance and Territorial Development, and received inputs from Dorothée Allain-Dupré, Monica Brezzi, Claire Charbit, Jose-Enrique Garcilazo, Lamia Kamal-Chaoui, Soo-Jin Kim, Karen Maguire, Joaquim Oliveira Martins, Adam Ostry, Mario Piacentini, William Tompson, Raffaele Trapasso and Camila Vammalle. The OECD Local Economic and Employment Development Programme (LEED) prepared the section on local labour-market policies. Statistical support was provided by Vicente Ruiz and Daniel Sanchez-Serra. Julie Harris edited the report and Jeanette Duboys prepared it for publication.

Contributions to the policy forum in Part III were made by OECD Territorial Development Policy Committee Chair John Fernandez of the US Department of Commerce, Indermit Gill of the World Bank, Paul Cheshire of the London School of Economics, Jung Hun Kim of the Korea Institute of Public Finance, Philip McCann of the University of Groningen, Andrés Rodríguez-Pose of the London School of Economics and Fabrizio Barca of the Italian Ministry of Economy and Finance, himself a former chair of the OECD's Territorial Development Policy Committee.

The Secretariat is grateful to delegates to the OECD Territorial Development Policy Committee for valuable feedback on the draft.



**From:**  
**OECD Regional Outlook 2011**  
Building Resilient Regions for Stronger Economies

**Access the complete publication at:**  
<https://doi.org/10.1787/9789264120983-en>

**Please cite this chapter as:**

OECD (2011), "Acknowledgements", in *OECD Regional Outlook 2011: Building Resilient Regions for Stronger Economies*, OECD Publishing, Paris.

DOI: <https://doi.org/10.1787/9789264120983-2-en>

This work is published under the responsibility of the Secretary-General of the OECD. The opinions expressed and arguments employed herein do not necessarily reflect the official views of OECD member countries.

This document and any map included herein are without prejudice to the status of or sovereignty over any territory, to the delimitation of international frontiers and boundaries and to the name of any territory, city or area.

You can copy, download or print OECD content for your own use, and you can include excerpts from OECD publications, databases and multimedia products in your own documents, presentations, blogs, websites and teaching materials, provided that suitable acknowledgment of OECD as source and copyright owner is given. All requests for public or commercial use and translation rights should be submitted to [rights@oecd.org](mailto:rights@oecd.org). Requests for permission to photocopy portions of this material for public or commercial use shall be addressed directly to the Copyright Clearance Center (CCC) at [info@copyright.com](mailto:info@copyright.com) or the Centre français d'exploitation du droit de copie (CFC) at [contact@cfcopies.com](mailto:contact@cfcopies.com).