

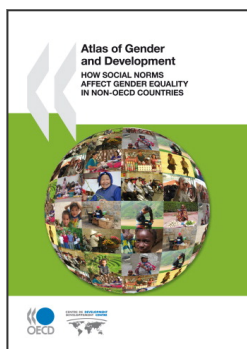
Acknowledgements

This *Atlas of Gender and Development: How Social Norms Affect Gender Equality in non-OECD Countries* is the result of the OECD Development Centre's work on the Social Institutions and Gender Index (SIGI), which was constructed in collaboration with a research team from Göttingen University and under the leadership of Johannes Jütting, Head of the Poverty Reduction and Social Development Unit at the Development Centre. We would like in particular to extend our gratitude to Stephan Klasen, Maria Ziegler and Boris Branisa from Göttingen University.

This *Atlas* has benefited from inputs and comments from colleagues both inside and outside the OECD. To all of them we express our warm thanks. The SIGI is based on 124 detailed country notes which form the basis for the social institutions variables, SIGI scores and ranking. We would like to particularly thank Christian Morrisson, Carina Lindberg and Rémi Bazillier for writing them. We would also like to thank Geske Dijkstra and her team at Erasmus University Rotterdam for providing extensive reviews of the draft country notes and for validating our findings. We extend our thanks to Denis Drechsler, who co-ordinated the online publication of the country notes and initiated the idea of a printed publication of the notes in the form of an *Atlas*, and to Espen Prydz, who developed the www.genderindex.org website in order to feature the SIGI and the country notes.

Finally, we would like to thank our colleagues at the Development Centre: Chris Garroway, Estelle Loiseau and Nejma Bouchama for their help in preparing all the material for the *Atlas*, including maps, graphs, world and regional overviews, for editing the country notes and for ensuring the smooth running of the logistics related to this project. Many thanks also to Karen Barnes, Amalia Johnsson, Martha Baxter and Angela Hariche for their extremely useful comments during the final review process, to Magali Geney for designing the graphics for each regional ranking and the publication cover, and to Michèle Girard for her bibliographical help.

Financial support from the Swedish, Norwegian and Finnish Ministries for Foreign Affairs is gratefully acknowledged.



From:

Atlas of Gender and Development

How Social Norms Affect Gender Equality in non-OECD Countries

Access the complete publication at:

<https://doi.org/10.1787/9789264077478-en>

Please cite this chapter as:

OECD (2010), "Acknowledgements", in *Atlas of Gender and Development: How Social Norms Affect Gender Equality in non-OECD Countries*, OECD Publishing, Paris.

DOI: <https://doi.org/10.1787/9789264077478-2-en>

This work is published under the responsibility of the Secretary-General of the OECD. The opinions expressed and arguments employed herein do not necessarily reflect the official views of OECD member countries.

This document and any map included herein are without prejudice to the status of or sovereignty over any territory, to the delimitation of international frontiers and boundaries and to the name of any territory, city or area.

You can copy, download or print OECD content for your own use, and you can include excerpts from OECD publications, databases and multimedia products in your own documents, presentations, blogs, websites and teaching materials, provided that suitable acknowledgment of OECD as source and copyright owner is given. All requests for public or commercial use and translation rights should be submitted to rights@oecd.org. Requests for permission to photocopy portions of this material for public or commercial use shall be addressed directly to the Copyright Clearance Center (CCC) at info@copyright.com or the Centre français d'exploitation du droit de copie (CFC) at contact@cfcopies.com.