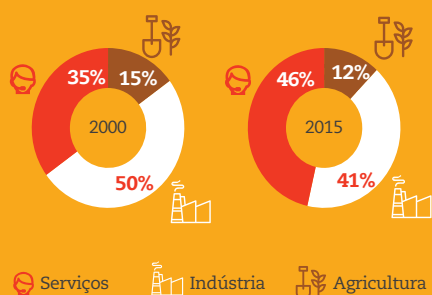


Dinâmicas de crescimento, emprego e desigualdades na África Central

Composição do PIB

O setor dos serviços cresceu à custa dos setores agrícola e industrial



Crescimento

Curto prazo

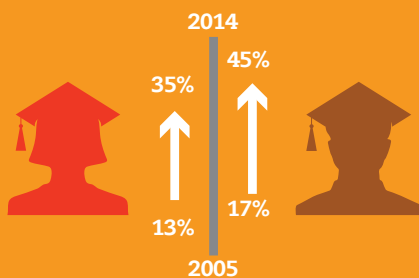


Longo prazo



Igualdade de Género

Taxas de conclusão do ensino secundário para raparigas e rapazes

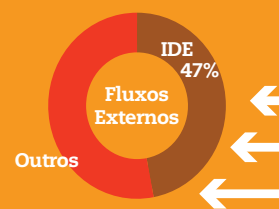


A taxa de maternidade na adolescência



Receitas

Em 2016, o IDE na África Central atingiu 4.7 mil milhões de USD



Energia

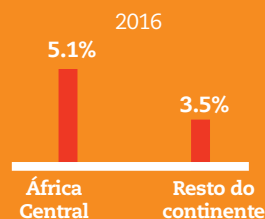
Os recursos energéticos nos países da CEEAC representam



60%
do potencial do continente

Violência

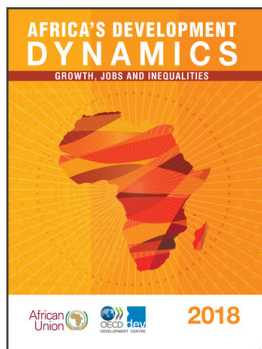
Maior violência proveniente de atores não-estatais



Cerca de 542 380 pessoas fugiram da República Centro-Africana desde 2013

o que equivale a 10% da população





From:
Africa's Development Dynamics 2018
Growth, Jobs and Inequalities

Access the complete publication at:
<https://doi.org/10.1787/9789264302501-en>

Please cite this chapter as:

African Union Commission/OECD (2018), "Computação gráfica: Dinâmicas de crescimento, emprego e desigualdade na África Central", in *Africa's Development Dynamics 2018: Growth, Jobs and Inequalities*, OECD Publishing, Paris/African Union Commission, Addis Ababa.

DOI: <https://doi.org/10.1787/9789264306301-13-pt>

This work is published under the responsibility of the Secretary-General of the OECD. The opinions expressed and arguments employed herein do not necessarily reflect the official views of OECD member countries.

This document and any map included herein are without prejudice to the status of or sovereignty over any territory, to the delimitation of international frontiers and boundaries and to the name of any territory, city or area.

You can copy, download or print OECD content for your own use, and you can include excerpts from OECD publications, databases and multimedia products in your own documents, presentations, blogs, websites and teaching materials, provided that suitable acknowledgment of OECD as source and copyright owner is given. All requests for public or commercial use and translation rights should be submitted to rights@oecd.org. Requests for permission to photocopy portions of this material for public or commercial use shall be addressed directly to the Copyright Clearance Center (CCC) at info@copyright.com or the Centre français d'exploitation du droit de copie (CFC) at contact@cfcopies.com.