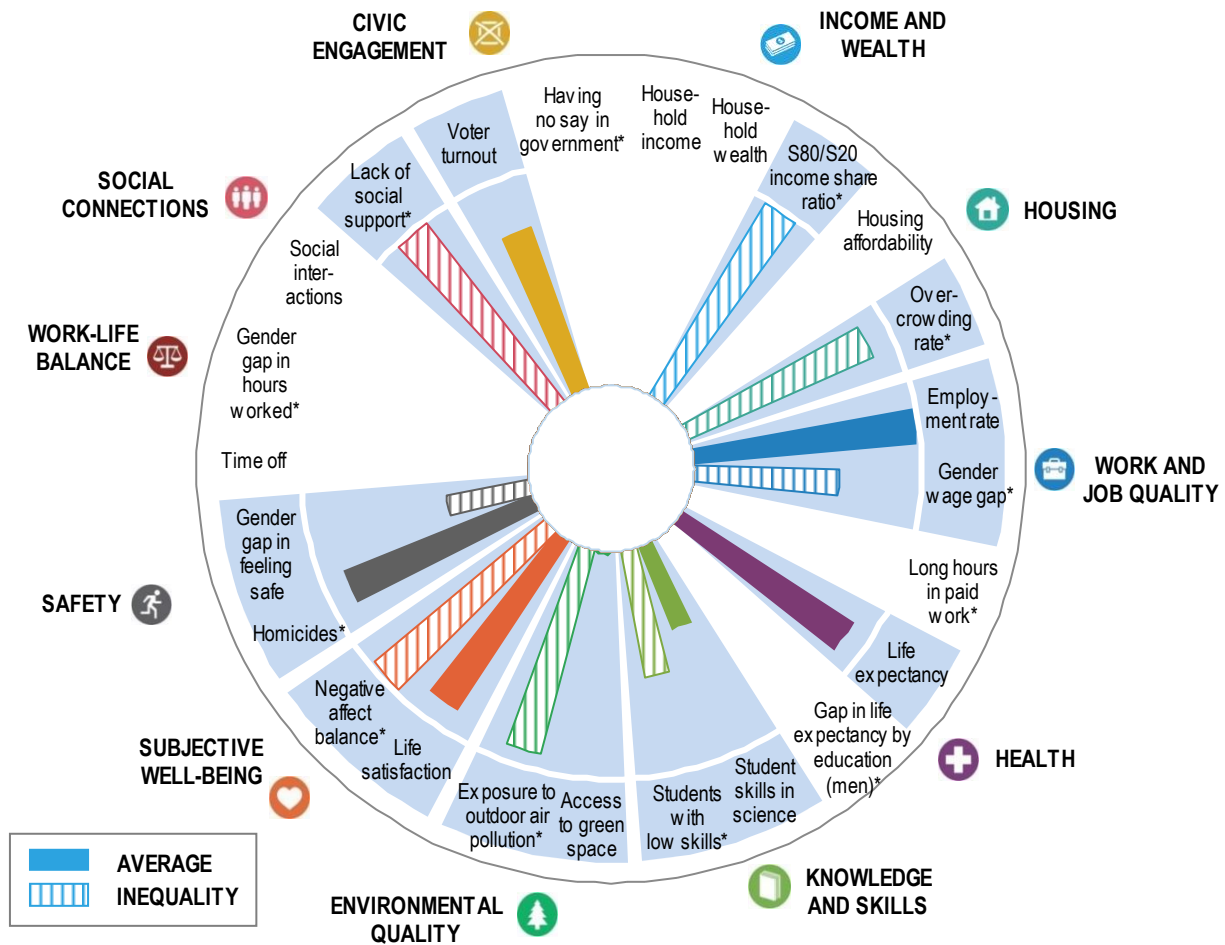


How's Life in Iceland?

Iceland's current well-being, 2018 or latest available year



Note: This chart shows Iceland's relative strengths and weaknesses in well-being compared to other OECD countries. Longer bars always indicate better outcomes (i.e. higher wellbeing), whereas shorter bars always indicate worse outcomes (lower wellbeing) – including for negative indicators, marked with an *, which have been reverse-scored. Inequalities (gaps between top and bottom, differences between groups, people falling under a deprivation threshold) are shaded with stripes, and missing data in white.

Iceland's resources for future well-being, 2018 or latest available year

Natural Capital	Economic Capital	Human Capital	Social Capital
Greenhouse gas emissions per capita ③ ↔	Produced fixed assets	Educational attainment of young adults ③ ↗	Trust in others ① ...
Material footprint ③ ↔	Financial net worth of government ② ↔	Premature mortality ① ↔	Trust in government ② ↔
Red List Index of threatened species ② ↘	Household debt	Labour underutilisation rate ① ↗	Gender parity in politics ① ↗

Note: ①=top-performing OECD tier, ②=middle-performing OECD tier, ③=bottom-performing OECD tier. ↗ indicates consistent improvement; ↔ indicates no clear or consistent trend; ↘ indicates consistent deterioration, and "..." indicates insufficient time series to determine trends since 2010. For methodological details, see the Reader's Guide of *How's Life? 2020*.

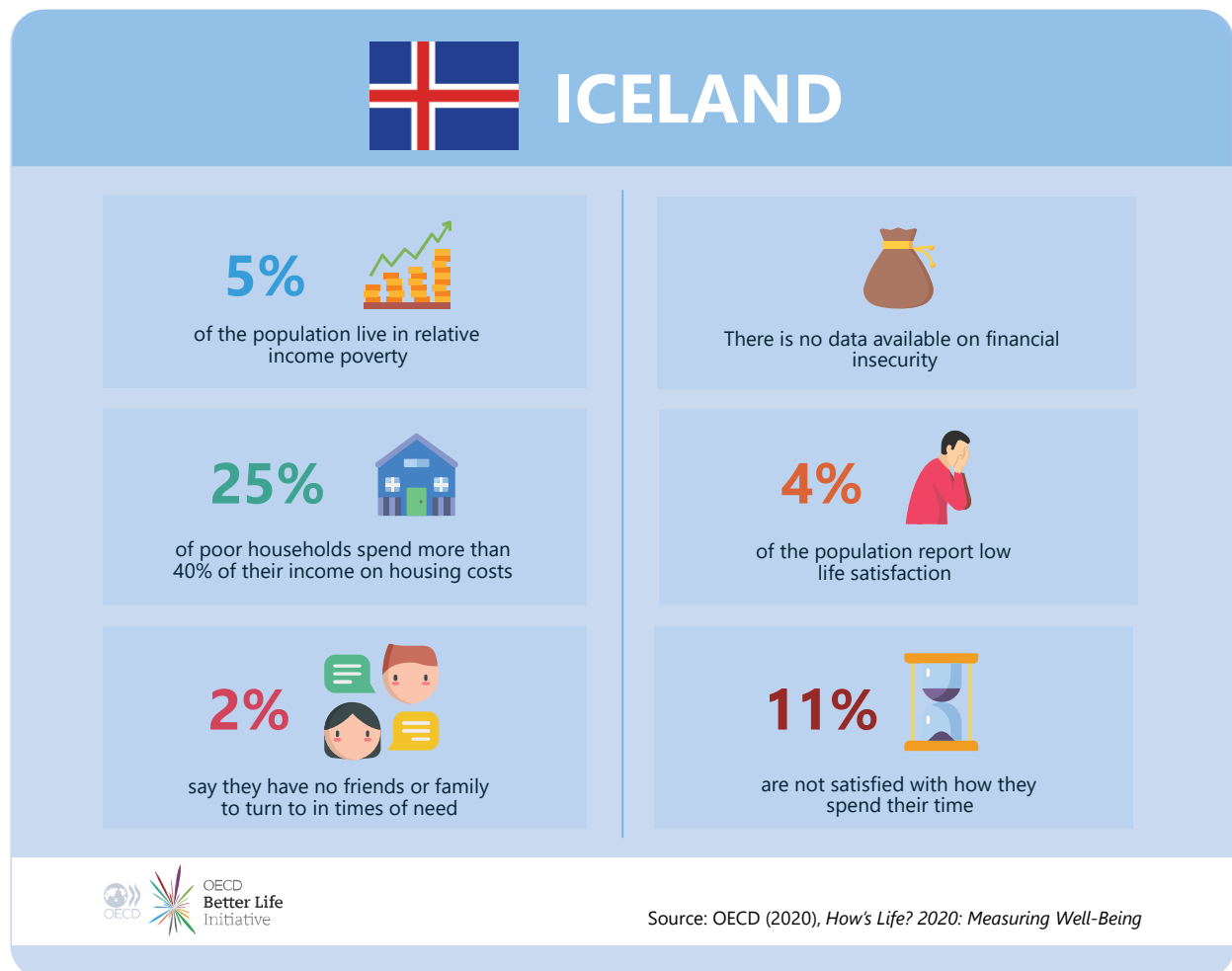
For more information

Access the complete publication, including information about the methods used to determine trends at: <https://doi.org/10.1787/9870c393-en>.

Find the data used in this country profile at: <http://oecd.org/statistics/Better-Life-Initiative-2020-country-notes-data.xlsx>.

Deprivations in Iceland

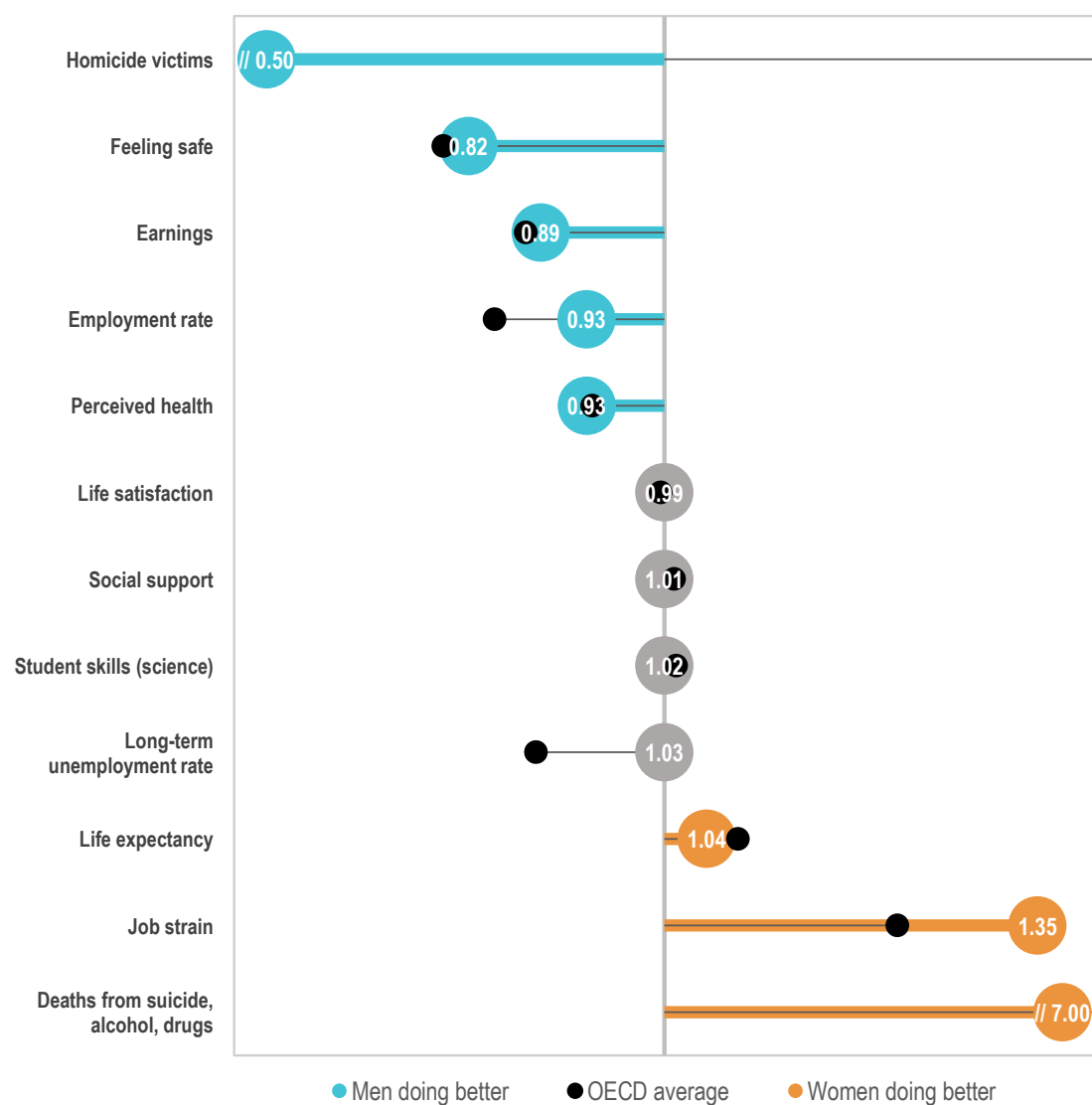
Deprivations in selected indicators of current well-being, 2018 or latest available year



Note: Relative income poverty refers to the share of people with household disposable income below 50% of the national median; financial insecurity refers to the share of individuals who are not income poor, but whose liquid financial assets are insufficient to support them at the level of the national relative income poverty line for at least three months; housing cost overburden refers to the share of households in the bottom 40% of the income distribution spending more than 40% of their disposable income on housing costs; and low satisfaction with life and with time use refer to the share of the population rating their satisfaction as 4 or lower (on a 0-10 scale).

Inequalities between men and women in Iceland

Gender ratios (distance from parity) for selected indicators of current well-being, 2018 or latest available year

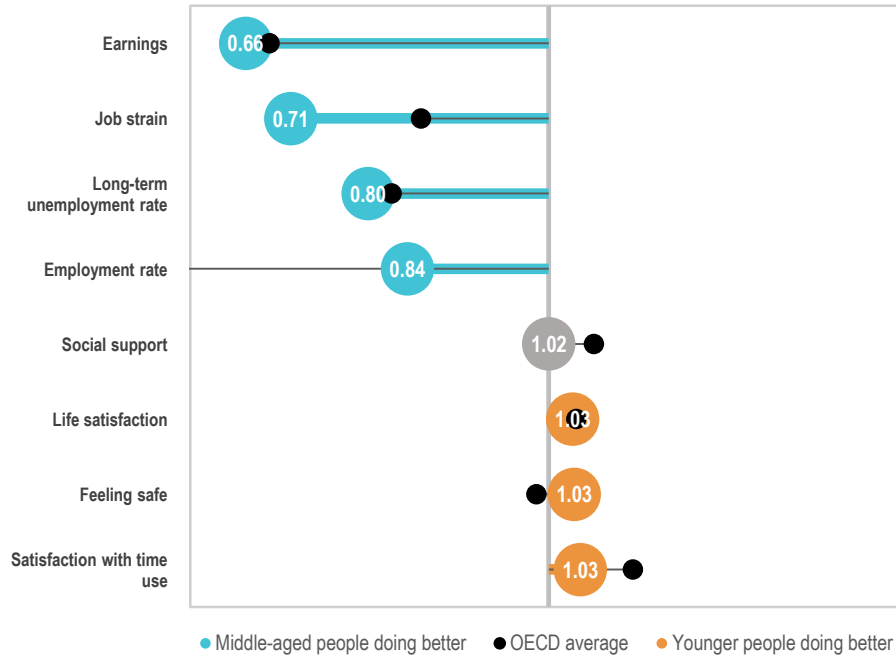


Note: Grey bubbles denote no clear difference between men and women, defined as gender ratios within 0.03 points distance to parity.

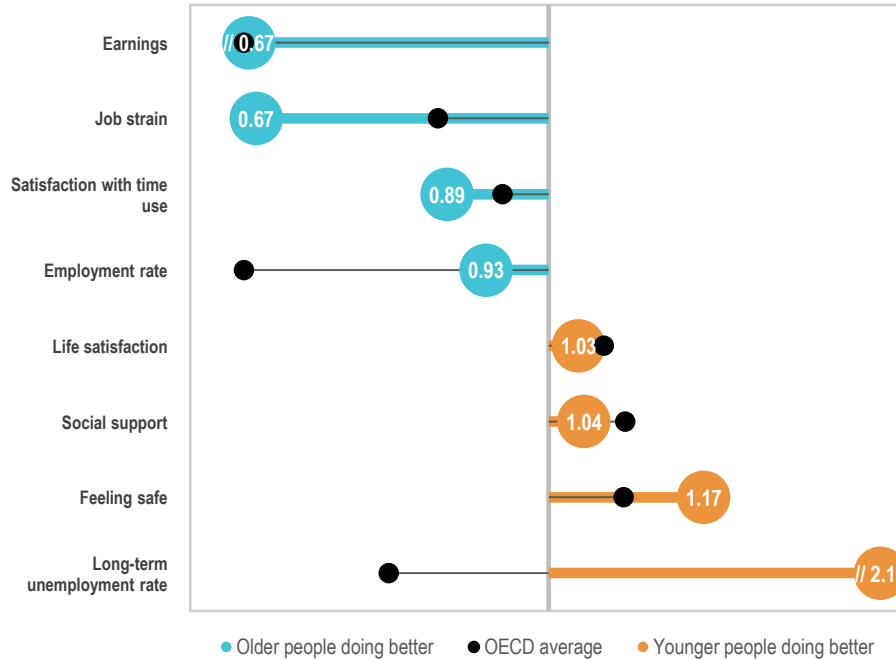
Inequalities between age groups in Iceland

Age ratios (distance from parity) for selected indicators of current well-being, 2018 or latest available year

A. Younger and middle-aged people



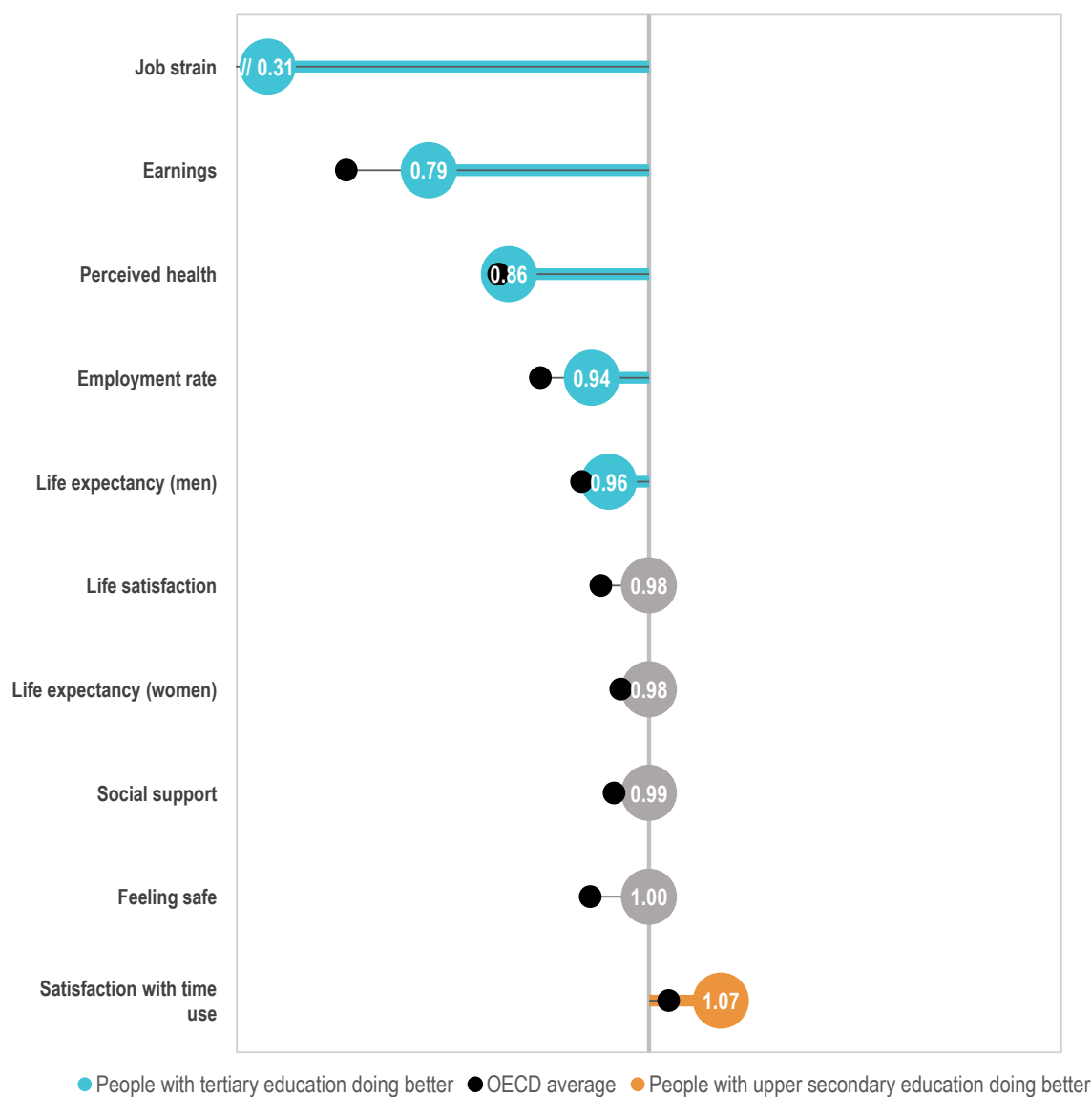
B. Younger and older people



Note: Age ranges differ according to each indicator and are only broadly comparable. They generally refer to 15-24/29 years for young people, 25/30 to 45/50 years for the middle-aged and 50 years and over for older people. See *How's Life? 2020* for further details. Grey bubbles denote no clear difference between age groups, defined as age ratios within 0.03 points distance to parity.

Inequalities between people with different educational attainment in Iceland

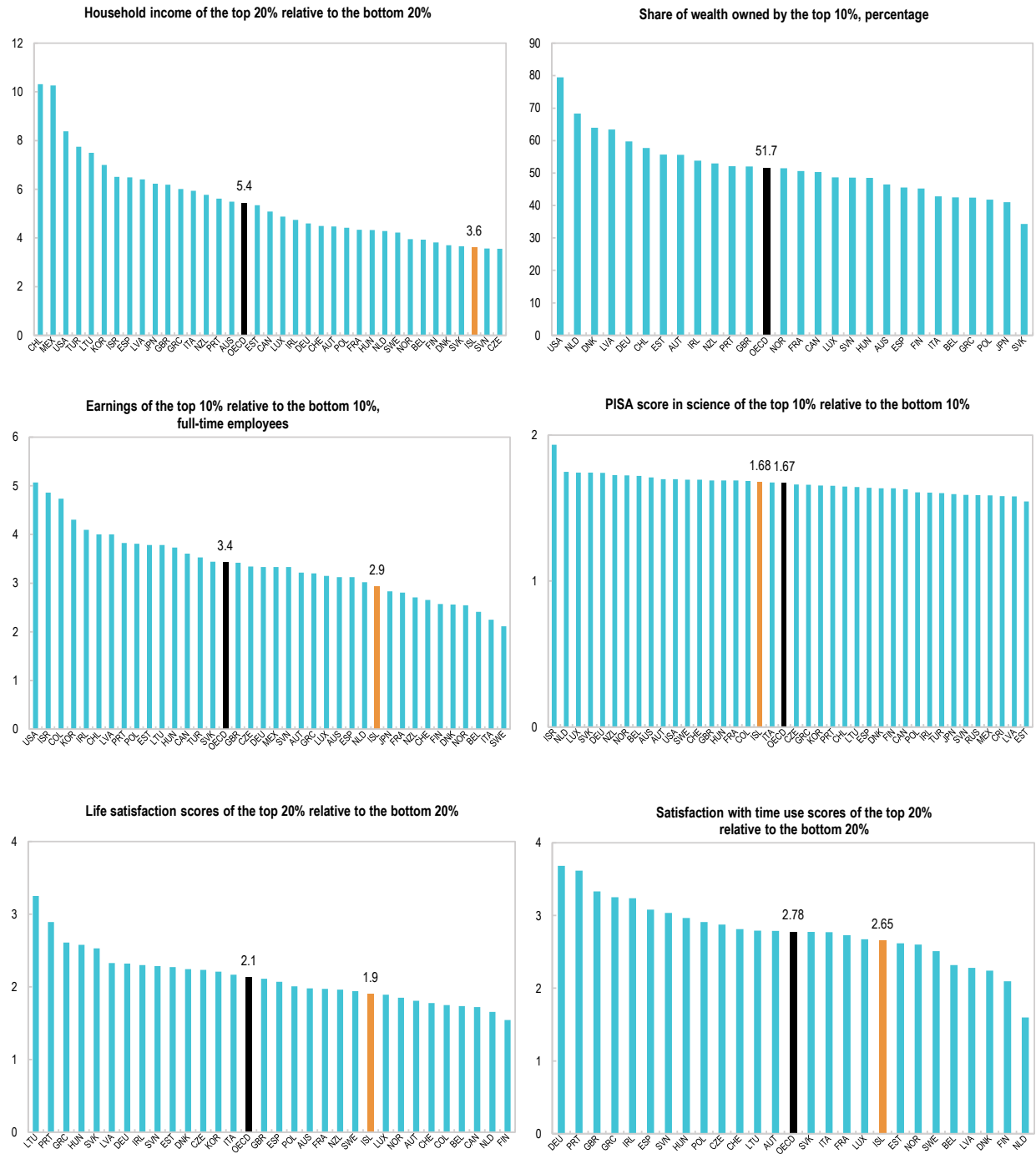
Education ratios (distance from parity) for selected indicators of current well-being, 2018 or latest available year



Note: Grey bubbles denote no clear difference between groups with different educational attainment, defined as education ratios within 0.03 points distance to parity.

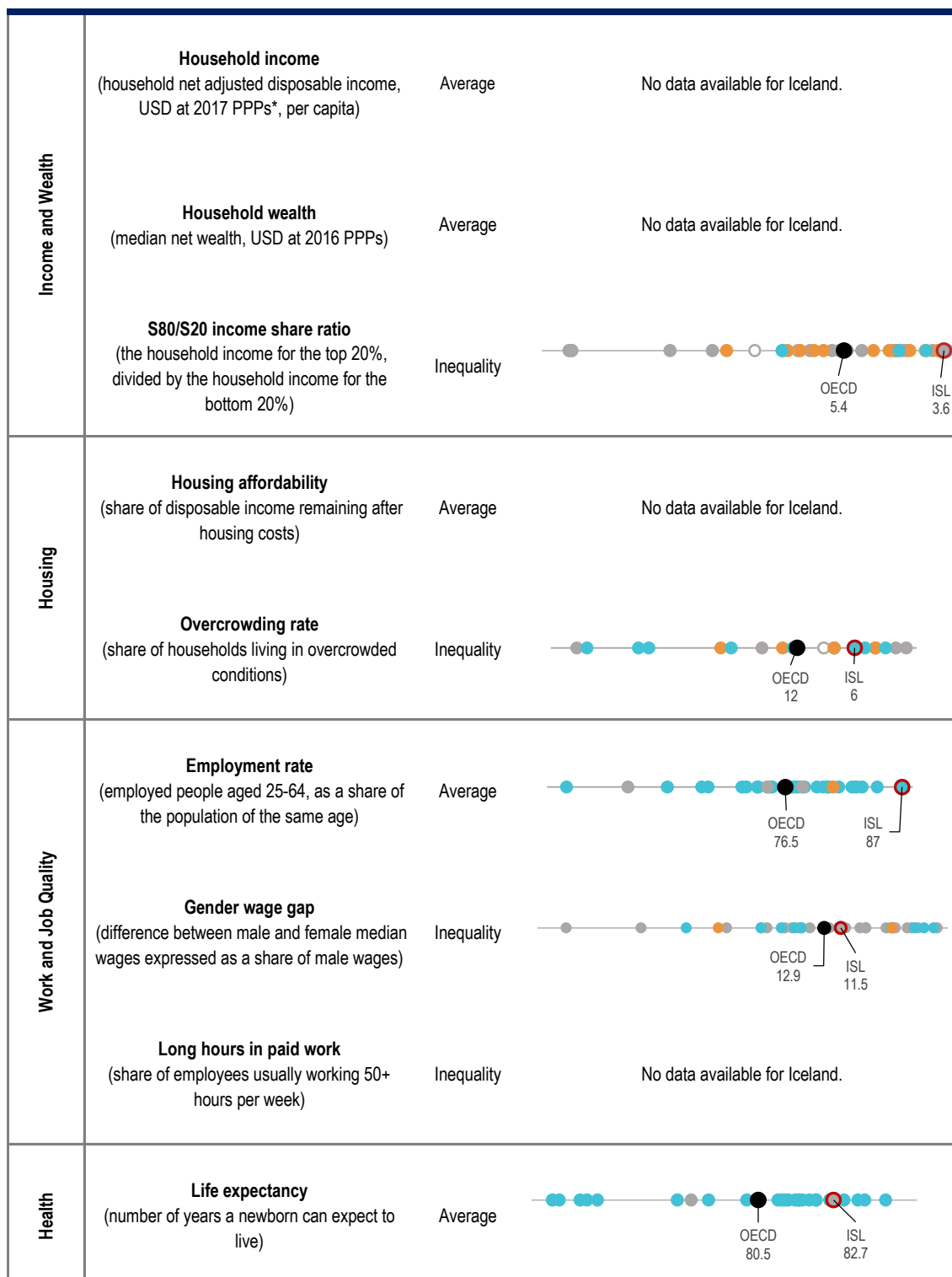
Inequalities between top and bottom performers in Iceland

Vertical inequalities for selected indicators of current well-being, 2018 or latest available year



Note: For all figures, countries are ranked from left (most unequal) to right (least unequal).

Trends in current well-being since 2010 in Iceland - I

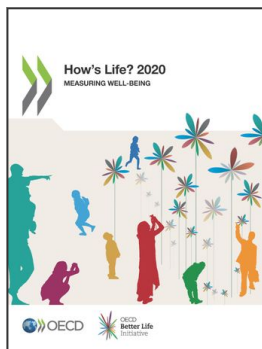


Note: The snapshot depicts data for 2018, or the latest available year, for each indicator. The colour of the circle indicates the direction of change, relative to 2010, or the closest available year: ● = consistent improvement, ● = consistent deterioration, ● = no clear trend, and white for insufficient time series to determine trends. The OECD average is marked in black. For methodological details, see the Reader's Guide of *How's Life? 2020*. * = Purchasing Power Parity.

Trends in current well-being since 2010 in Iceland - II

Knowledge and Skills	<p>Student skills in science (PISA mean scores)</p>	Average	<p>ISL 475 OECD 489</p>
	<p>Exposure to outdoor air pollution (share of population > WHO threshold)</p>	Inequality	<p>OECD 62.8 ISL 5.7</p>
Subjective Well-being	<p>Life satisfaction (mean value on a 0-10 scale)</p>	Average	<p>OECD 7.4 ISL 7.9</p>
	<p>Negative affect balance (share of population reporting more negative than positive feelings and states yesterday)</p>	Inequality	<p>OECD 13 ISL 5</p>
Safety	<p>Homicides (per 100 000 population)</p>	Average	<p>OECD 2.4 ISL 0.9</p>
	<p>Gender gap in feeling safe (percentage difference that women feel less safe than men when walking alone at night)</p>	Inequality	<p>ISL -17.8 OECD -16</p>
Work-life Balance	<p>Time off (time allocated to leisure and personal care, hours per day)</p>	Average	No data available for Iceland.
Social Connections	<p>Social interactions (hours per week)</p>	Average	No data available for Iceland.
	<p>Lack of social support (share of people who report having no friends or relatives whom they can count on in times of trouble)</p>	Inequality	<p>OECD 8.6 ISL 2.4</p>
Civic Engagement	<p>Voter turnout (share of registered voters who cast votes)</p>	Average	<p>OECD 69 ISL 79</p>

Note: See note on page 7.



From:
How's Life? 2020
Measuring Well-being

Access the complete publication at:
<https://doi.org/10.1787/9870c393-en>

Please cite this chapter as:

OECD (2020), "How's Life in Iceland?", in *How's Life? 2020: Measuring Well-being*, OECD Publishing, Paris.

DOI: <https://doi.org/10.1787/4ff23f2e-en>

This work is published under the responsibility of the Secretary-General of the OECD. The opinions expressed and arguments employed herein do not necessarily reflect the official views of OECD member countries.

This document, as well as any data and map included herein, are without prejudice to the status of or sovereignty over any territory, to the delimitation of international frontiers and boundaries and to the name of any territory, city or area. Extracts from publications may be subject to additional disclaimers, which are set out in the complete version of the publication, available at the link provided.

The use of this work, whether digital or print, is governed by the Terms and Conditions to be found at <http://www.oecd.org/termsandconditions>.