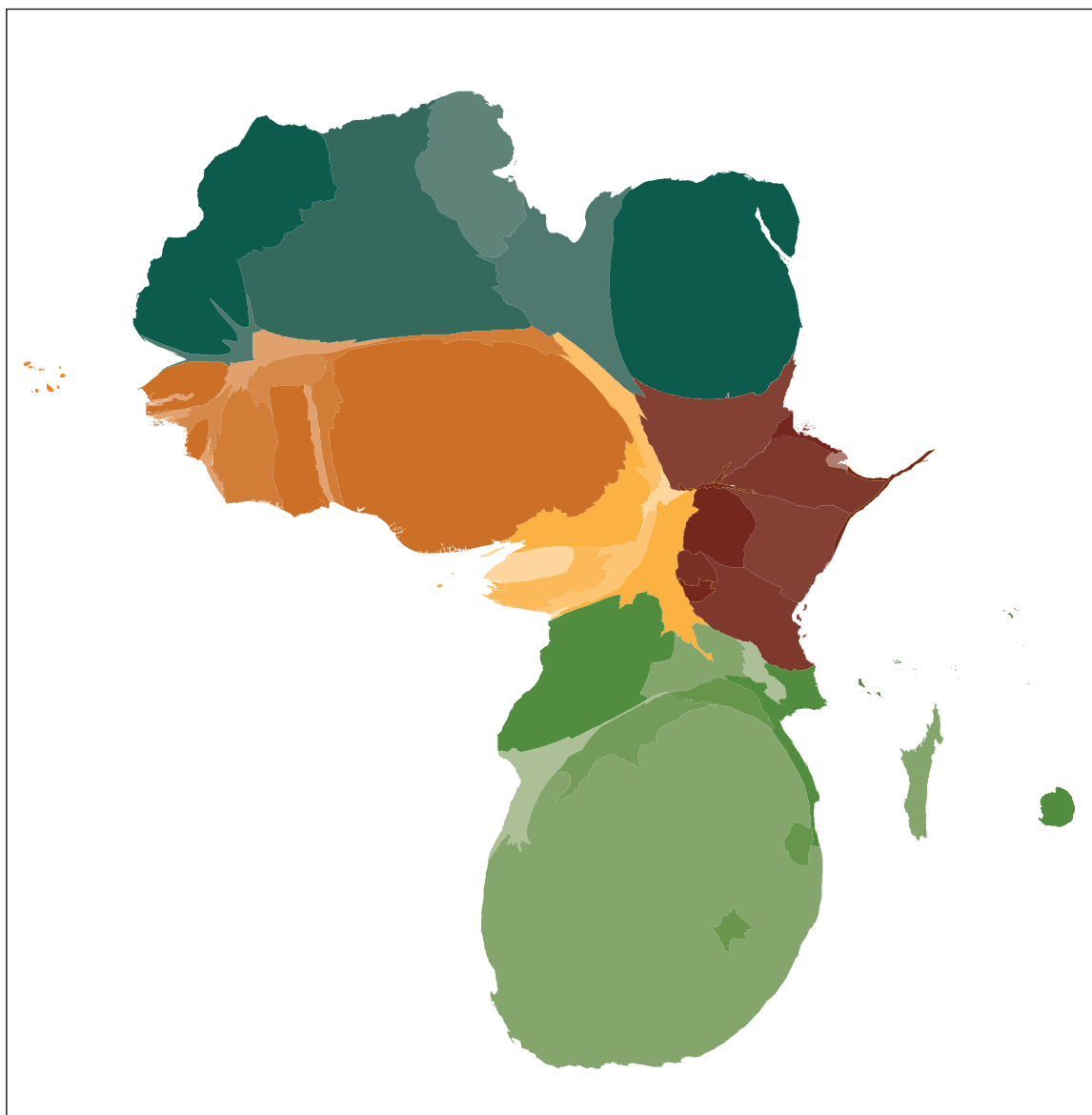


Mapas



Mapa 1. Países africanos ponderados pelo seu produto interno bruto
(média 2009-13)

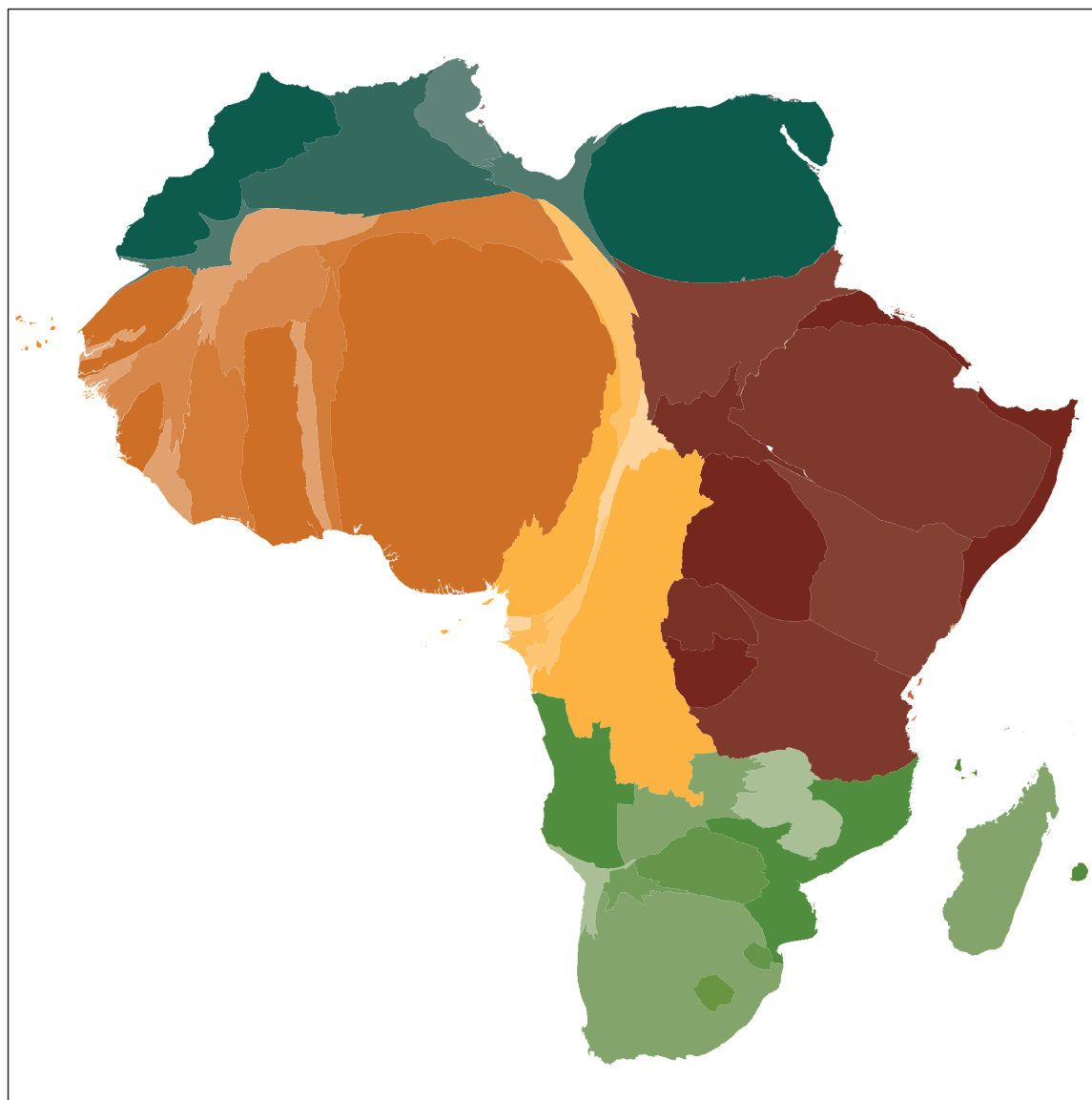







- Norte de África
- África Ocidental
- África Central
- África Oriental
- África Austral

Fonte: Losch (2013), Banco Mundial (2014); Unidade cartográfica do CIRAD.



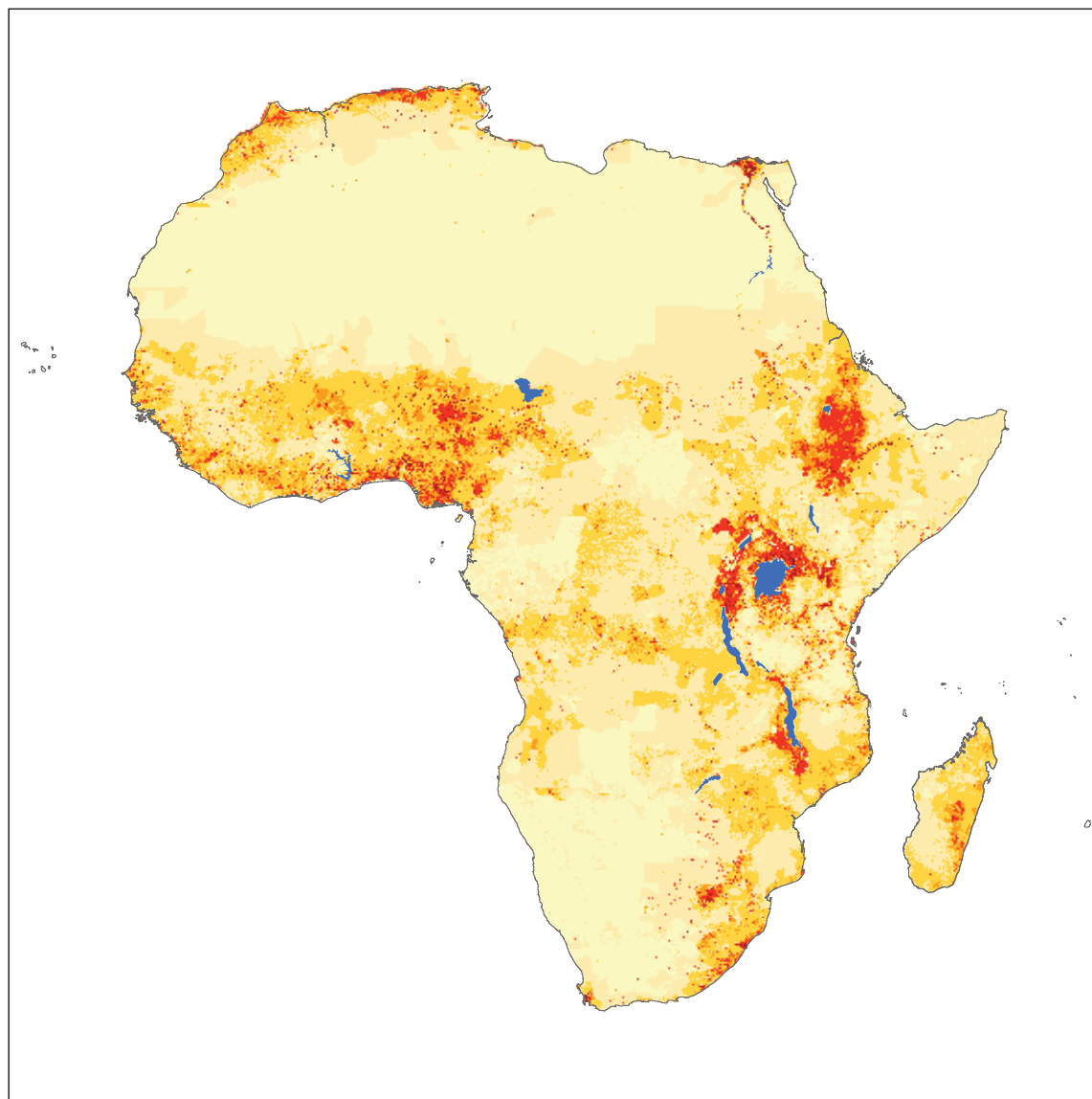
Mapa 2. Países africanos ponderados pela sua população (2010)



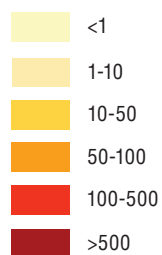
-  Norte de África
-  África Ocidental
-  África Central
-  África Oriental
-  África Austral

Fonte: Losch (2013); UNDESA (2012); Unidade cartográfica do CIRAD.

Mapa 3. Densidade populacional em África, 2010



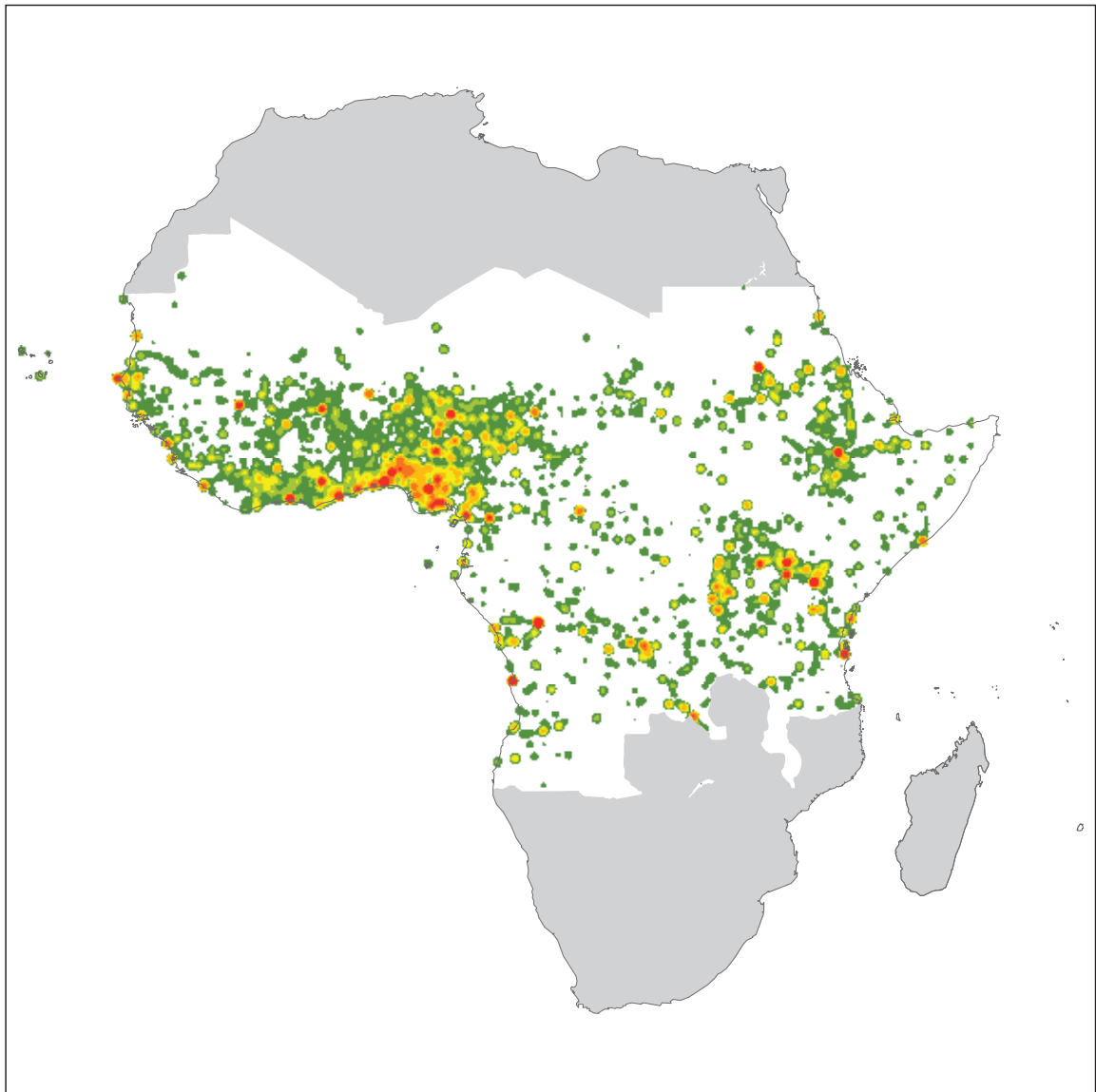
Número de pessoas/km²



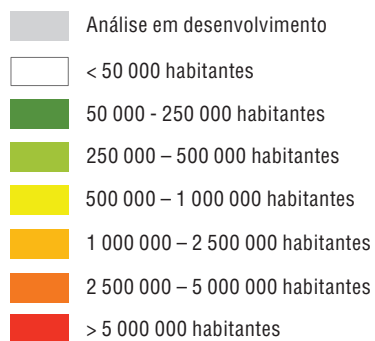
Fonte: WorldPop (2015); Losch, Magrin e Imbernon (2013).



Mapa 4. Centros de população urbana em África, 2010

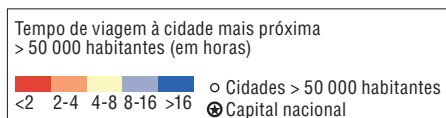
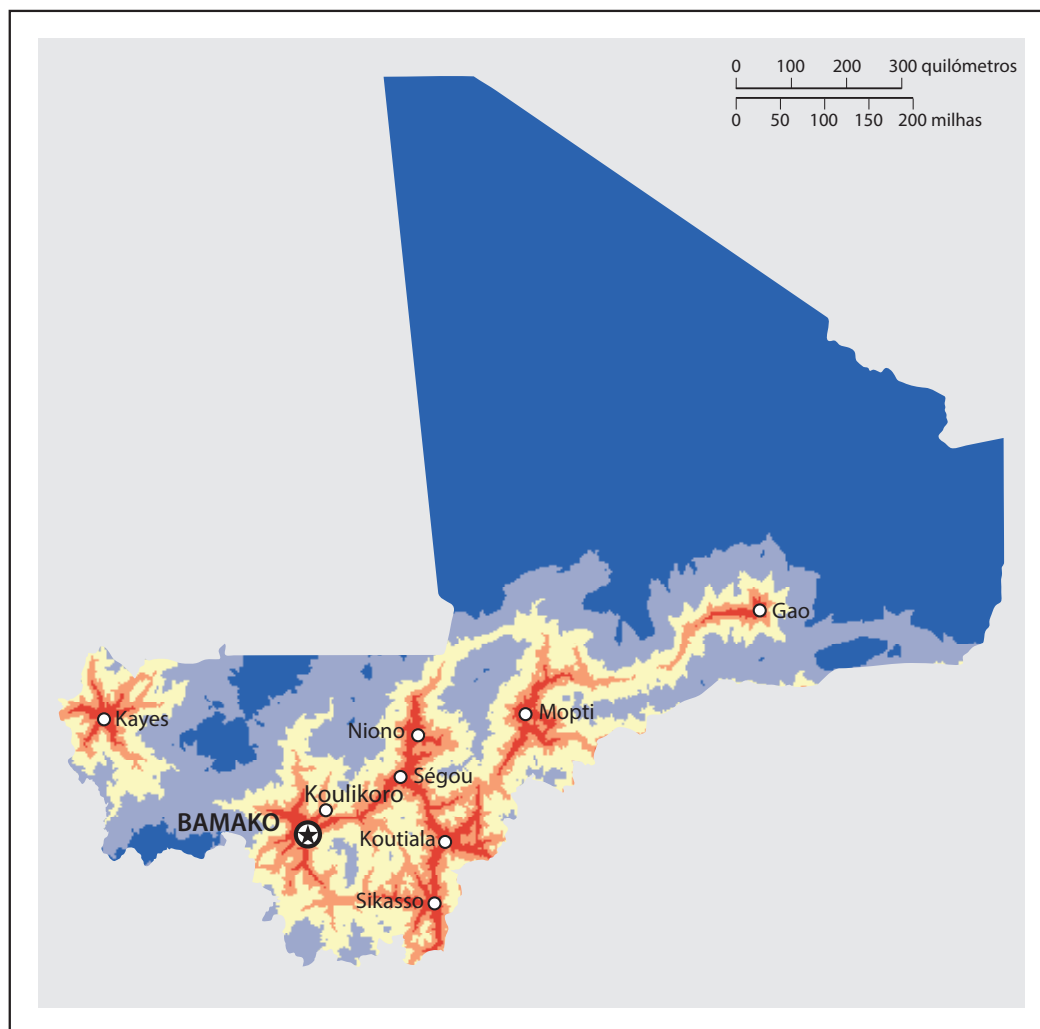


População de cidades num raio de 50km



Fonte: E-geopolis (2012); Losch, Magrin e Imbernon (2013).

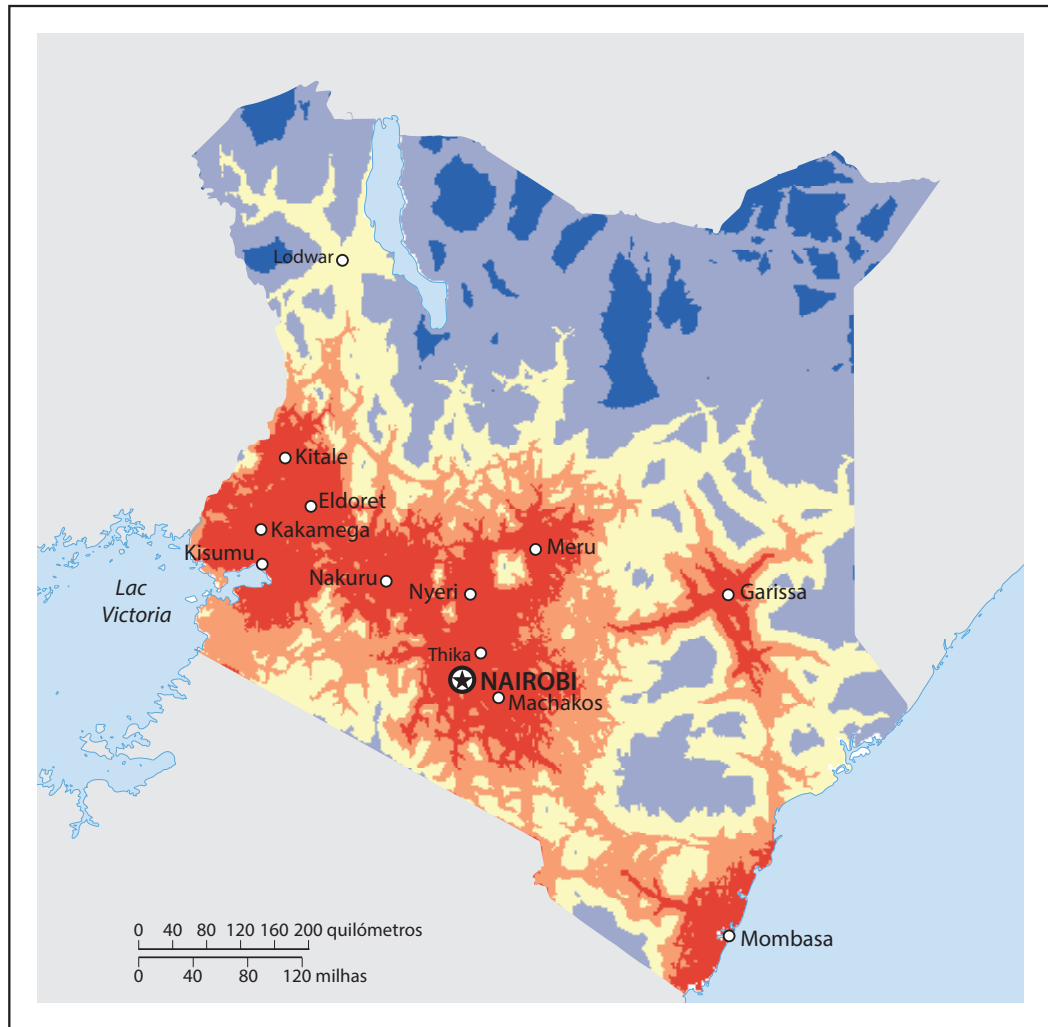
Mapa 5. Acessibilidade a cidades de mais de 50 000 habitantes no Mali



Fonte: Losch, Fréguin-Gresh e White (2012).



Mapa 6. Acessibilidade a cidades de mais de 50 000 habitantes no Quênia



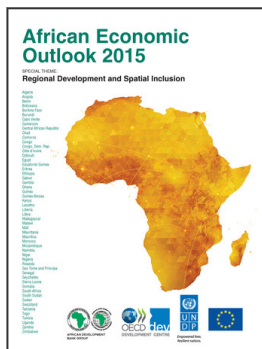
Tempo de viagem à cidade mais próxima > 50 000 habitantes (em horas)

■	■	■	■	■	○ Cidades > 50 000 habitantes
<2	2-4	4-8	8-16	>16	⊛ Capital nacional

Fonte: Losch, Fréguin-Gresh e White (2012).

Referências

- Banco Mundial (2014), *World Development Indicators* (base de dados), Banco Mundial, Washington, DC, <http://data.worldbank.org/indicator/NE.TRD.GNFS.ZS>.
- E-geopolis (2012), *Africapolis* (base de dados), www.e-geopolis.eu/ (consultado a 30 de março de 2015).
- Losch, B. (2013) “L’Afrique des villes a encore besoin de l’Afrique des champs pour répondre aux défis du continent”, *Déméter* 2014, Club Déméter, Paris, pp. 95-114.
- Losch, B., S. Fréguin-Gresh e E. White, (2012) *Structural Transformation and Rural Change Revisited: Challenges for Late Developing Countries in a Globalizing World*, Africa Development Forum Series, Banco Mundial e Agence Française de Développement, Washington, DC, <https://openknowledge.worldbank.org/handle/10986/2150>.
- Losch, B., G. Magrin e J. Imbernon (2013), *A new emerging rural world: An overview of rural change in Africa*, Atlas for the NEPAD Rural Futures Programme, Centre de Coopération Internationale en Recherche Agronomique pour le Développement (CIRAD), Montpellier.
- UNDESA (2012), *World Population Prospects: The 2012 Revision* (base de dados), <http://esa.un.org/wpp/> (consultado a 5 de março de 2015).
- WorldPop (2015), *Population* (base de dados), www.worldpop.org.uk/data/data_sources/ (consultado a 30 de março de 2015).



From:
African Economic Outlook 2015
Regional Development and Spatial Inclusion

Access the complete publication at:
<https://doi.org/10.1787/aeo-2015-en>

Please cite this chapter as:

African Development Bank/OECD/United Nations Development Programme (2015), "Mapas", in *African Economic Outlook 2015: Regional Development and Spatial Inclusion*, OECD Publishing, Paris.

DOI: <https://doi.org/10.1787/9789264233362-13-pt>

This work is published under the responsibility of the Secretary-General of the OECD. The opinions expressed and arguments employed herein do not necessarily reflect the official views of OECD member countries.

This document and any map included herein are without prejudice to the status of or sovereignty over any territory, to the delimitation of international frontiers and boundaries and to the name of any territory, city or area.

You can copy, download or print OECD content for your own use, and you can include excerpts from OECD publications, databases and multimedia products in your own documents, presentations, blogs, websites and teaching materials, provided that suitable acknowledgment of OECD as source and copyright owner is given. All requests for public or commercial use and translation rights should be submitted to rights@oecd.org. Requests for permission to photocopy portions of this material for public or commercial use shall be addressed directly to the Copyright Clearance Center (CCC) at info@copyright.com or the Centre français d'exploitation du droit de copie (CFC) at contact@cfcopies.com.