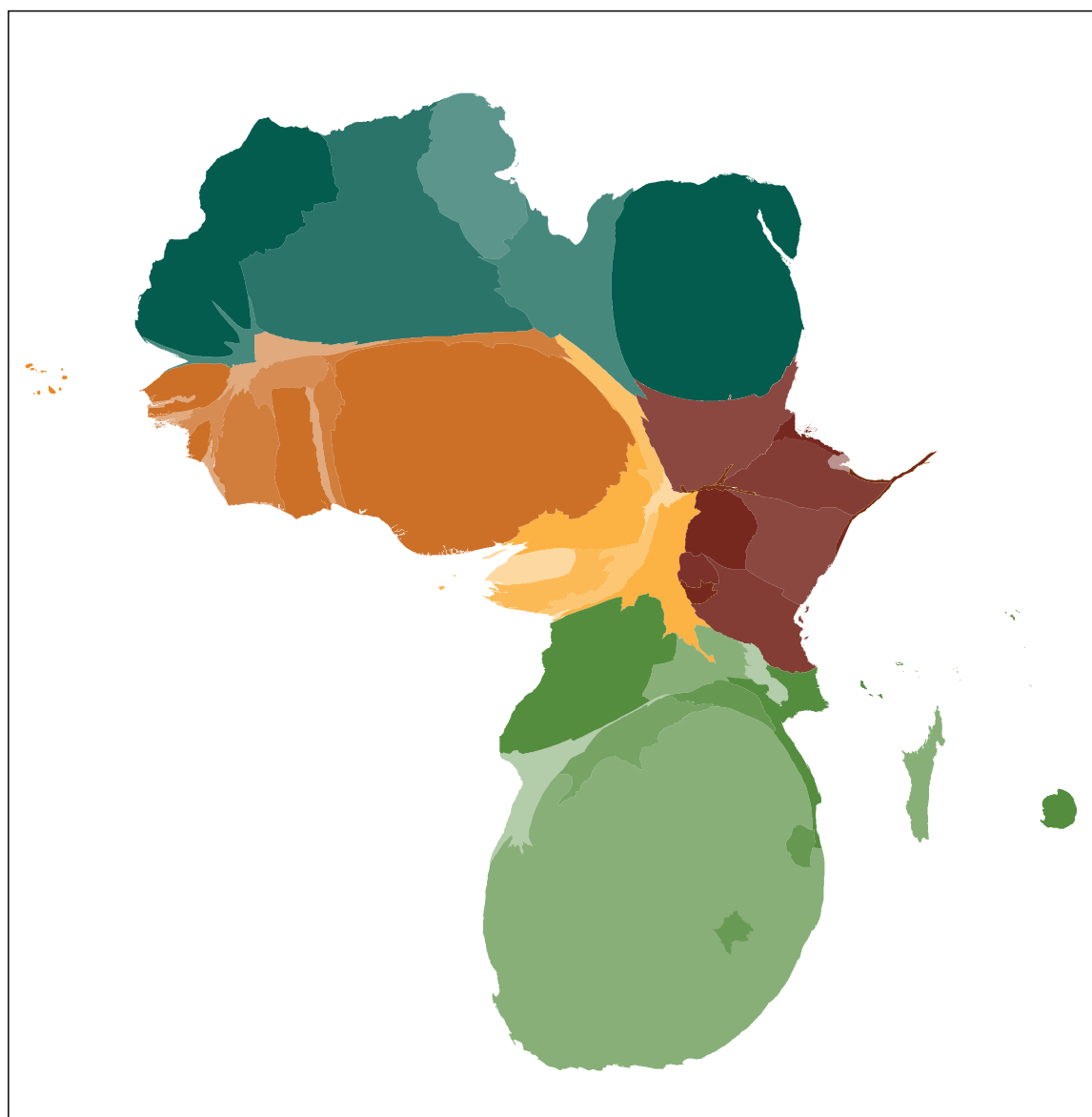


Maps



Map 1. African countries weighted by gross domestic product (average 2009-13)

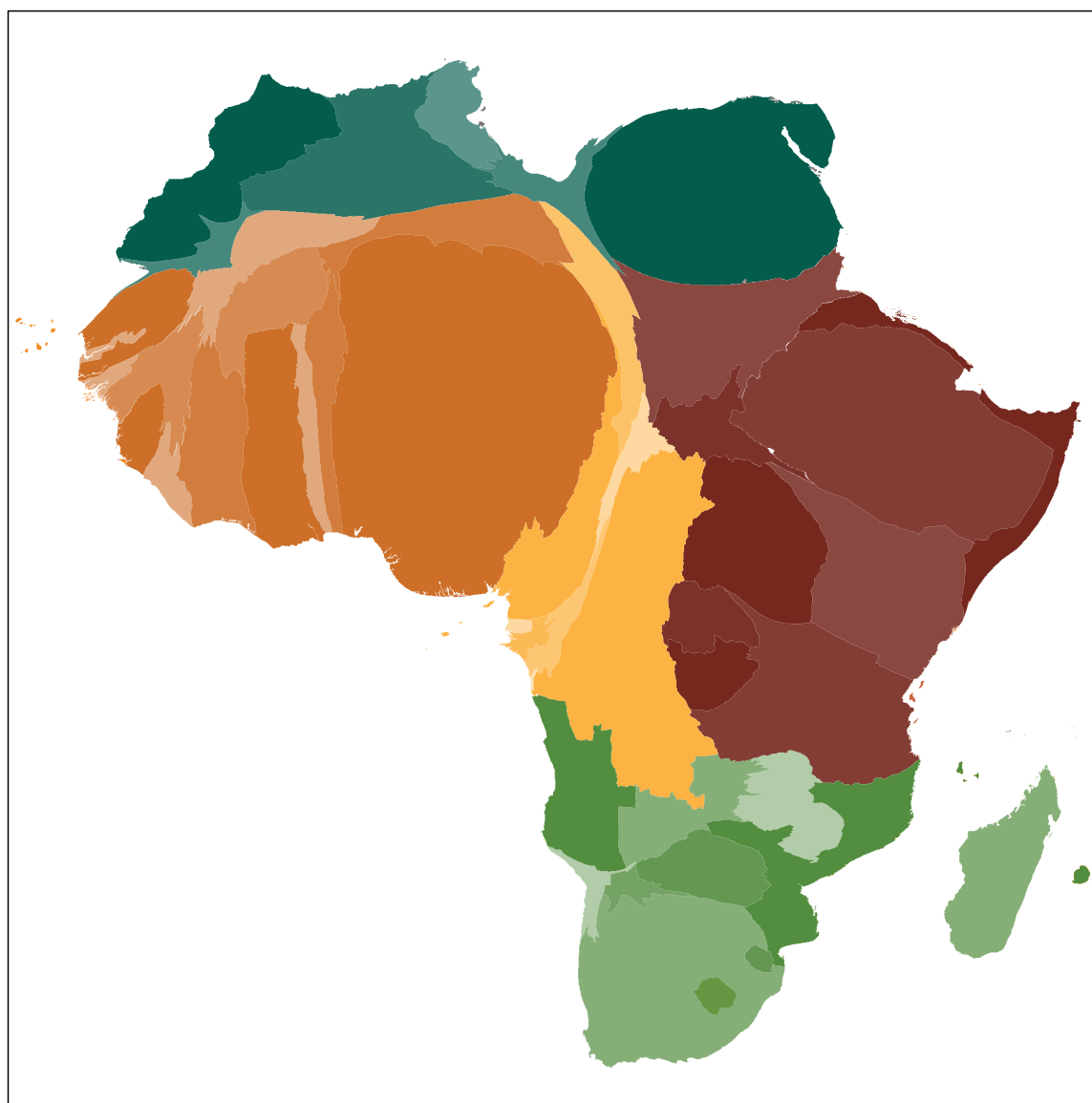







- North Africa
- West Africa
- Central Africa
- East Africa
- Southern Africa

Source: Losch (2013); World Bank (2014); CIRAD Cartography Unit.



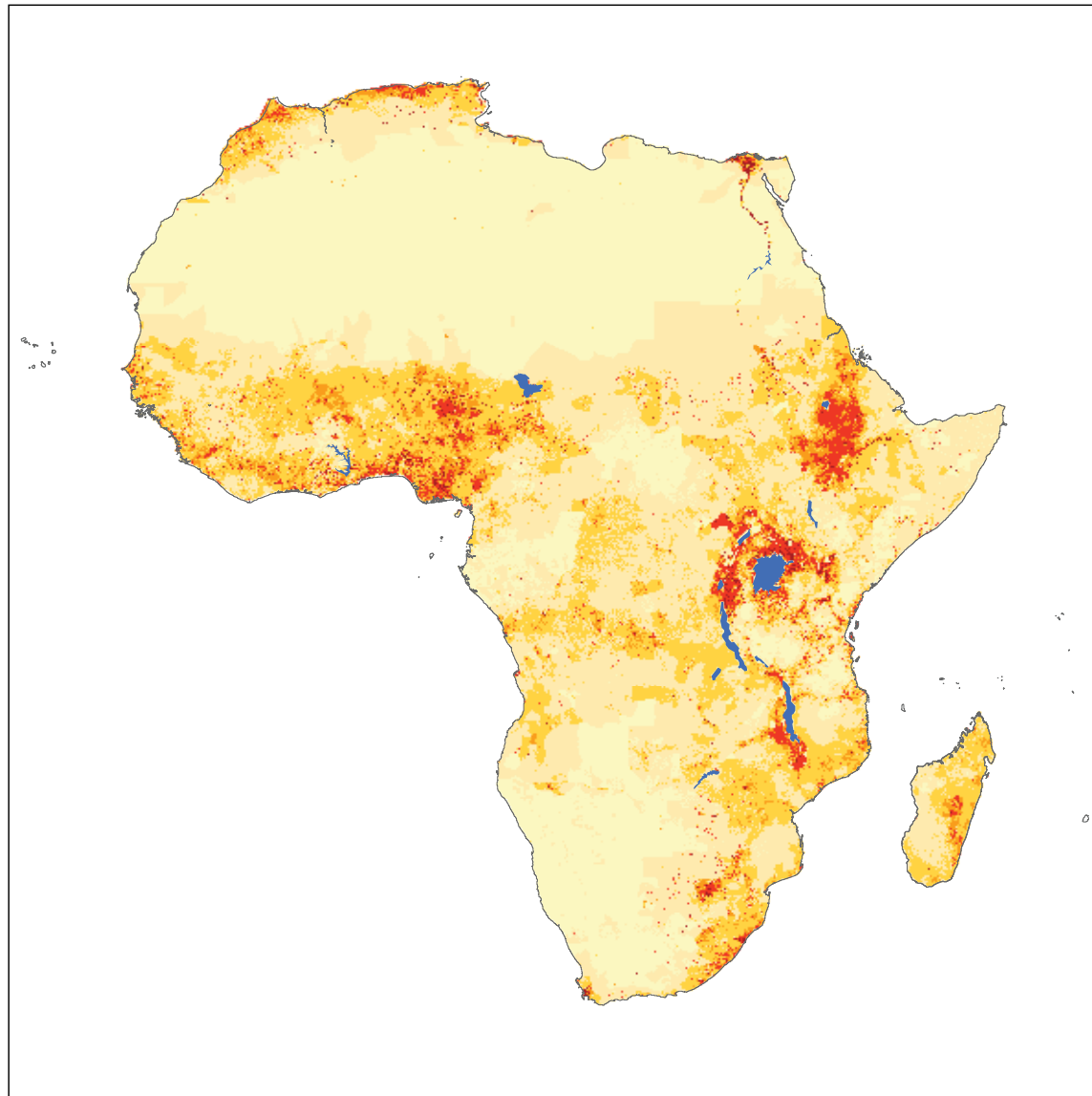
Map 2. African countries weighted by population, 2010



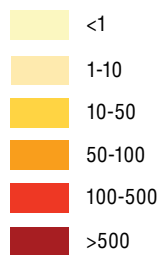
-  North Africa
-  West Africa
-  Central Africa
-  East Africa
-  Southern Africa

Source: Losch (2013); UNDESA (2012). CIRAD Cartography Unit.

Map 3. Population density in Africa, 2010



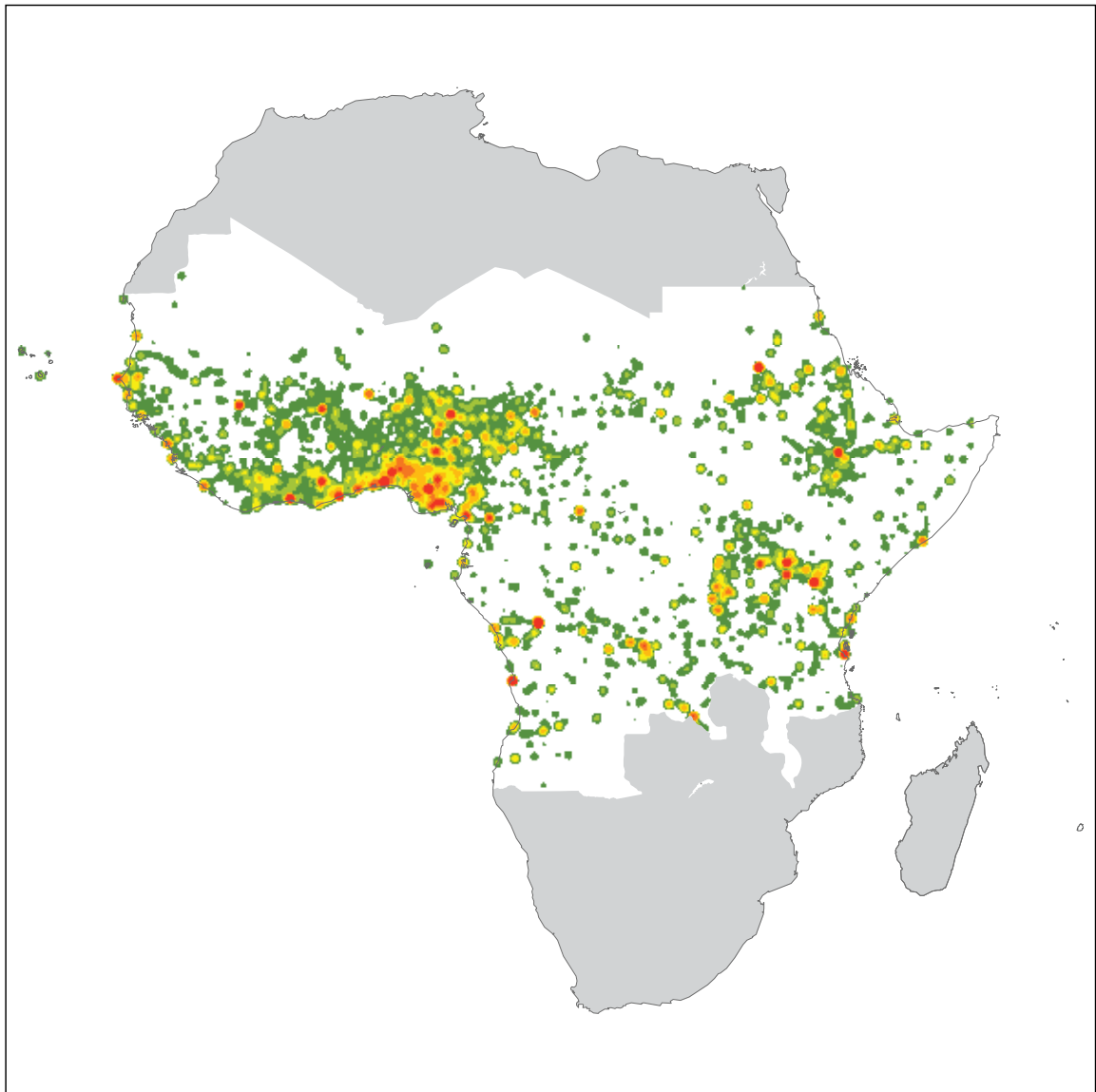
No. people/km²



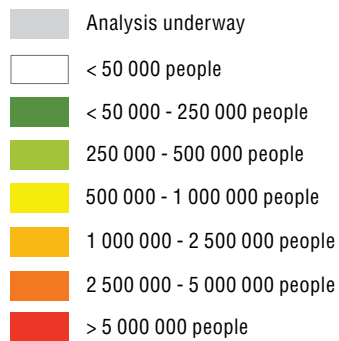
Source: WorldPop (2015); Losch, Magrin and Imbernon (2013).



Map 4. Urban population centres in Africa, 2010

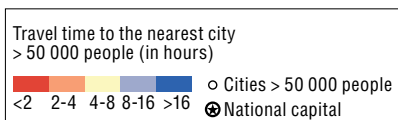
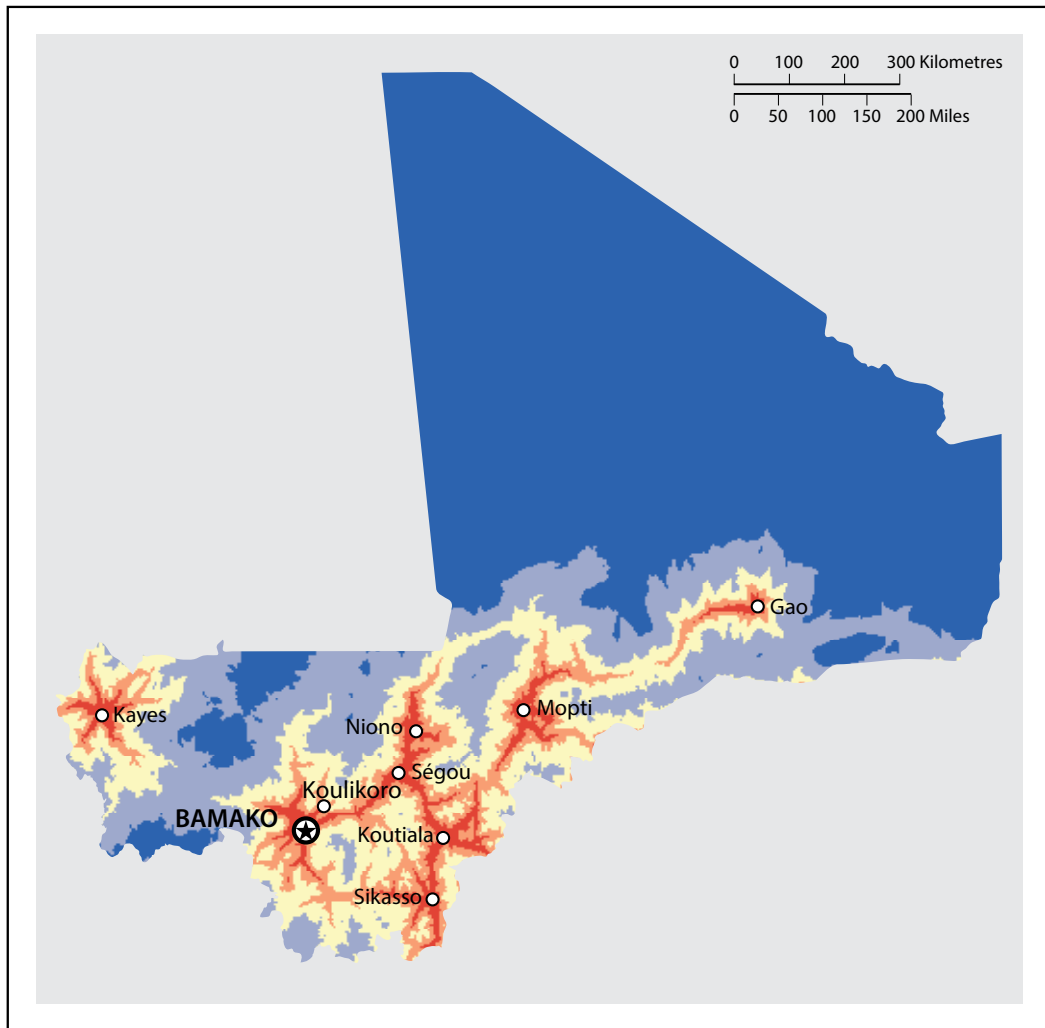


Size of towns within a 50 km radius



Source: E-geopolis (2012); Losch, Magrin and Imbernon (2013).

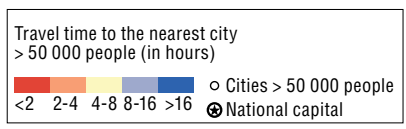
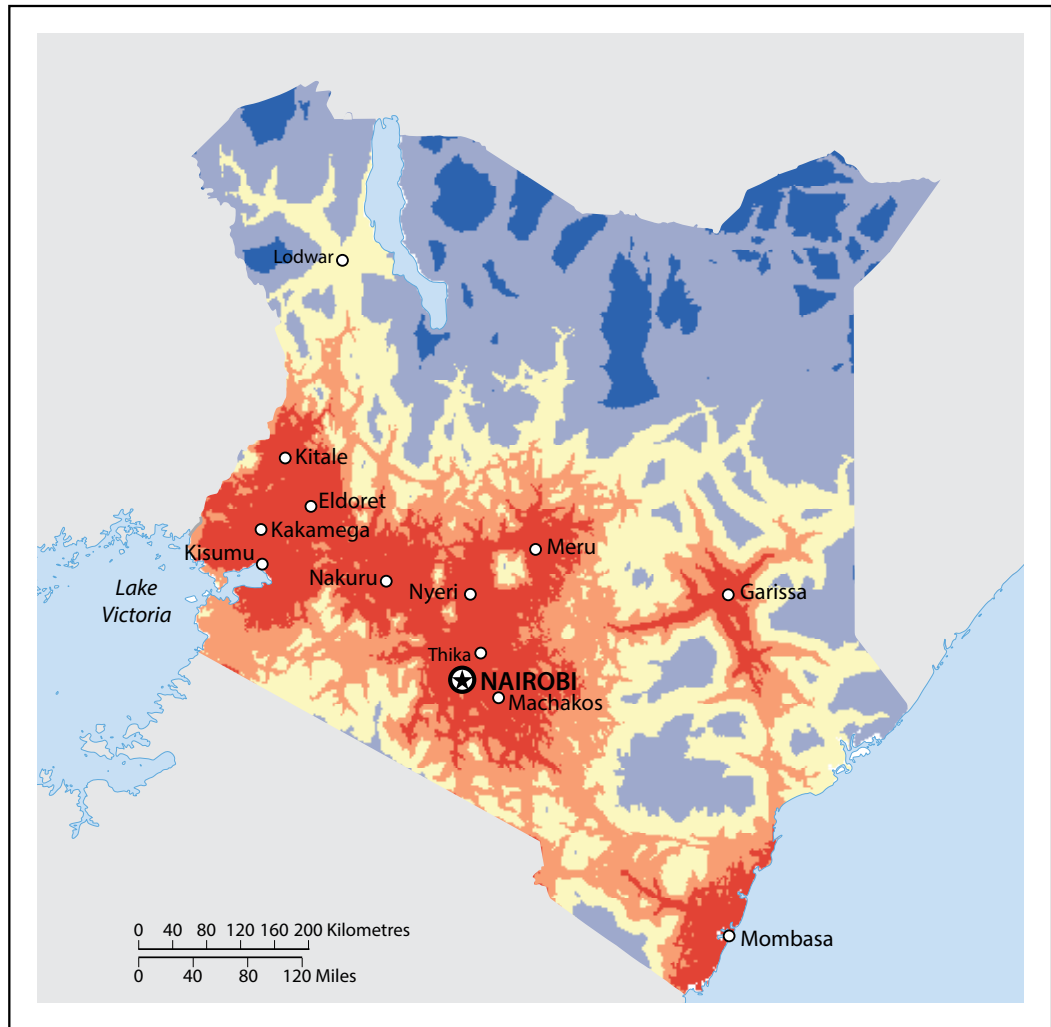
Map 5. Accessibility to cities of more than 50 000 people in Mali



Source: Losch, Fréguin-Gresh and White (2012).



Map 6. Accessibility to cities of more than 50 000 people in Kenya



Source: Losch, Fréguin-Gresh and White (2012).

References

- E-geopolis (2012), *Africapolis* (database), www.e-geopolis.eu/ (accessed 30 March 2015).
- Losch, B. (2013) “L’Afrique des villes a encore besoin de l’Afrique des champs pour répondre aux défis du continent”, *Déméter* 2014, Club Déméter, Paris, pp. 95-114.
- Losch, B., S. Fréguin-Gresh and E. White, (2012) *Structural Transformation and Rural Change Revisited: Challenges for Late Developing Countries in a Globalizing World*, Africa Development Forum Series, World Bank and Agence Française de Développement, Washington, DC, <https://openknowledge.worldbank.org/handle/10986/2150>.
- Losch, B., G. Magrin and J. Imbernon (2013), *A new emerging rural world: An overview of rural change in Africa*, Atlas for the NEPAD Rural Futures Programme, Centre de Coopération Internationale en Recherche Agronomique pour le Développement (CIRAD), Montpellier.
- UNDESA (2012), *World Population Prospects: The 2012 Revision* (database), <http://esa.un.org/wpp/> (accessed 5 March 2015).
- World Bank (2014), *World Development Indicators* (database), World Bank, Washington, DC, <http://data.worldbank.org/indicator/NE.TRD.GNFS.ZS>.
- WorldPop (2015), *Population* (database), www.worldpop.org.uk/data/data_sources/ (accessed 30 March 2015).



From:
African Economic Outlook 2015
Regional Development and Spatial Inclusion

Access the complete publication at:
<https://doi.org/10.1787/aeo-2015-en>

Please cite this chapter as:

African Development Bank/OECD/United Nations Development Programme (2015), "Maps", in *African Economic Outlook 2015: Regional Development and Spatial Inclusion*, OECD Publishing, Paris.

DOI: <https://doi.org/10.1787/aeo-2015-13-en>

This work is published under the responsibility of the Secretary-General of the OECD. The opinions expressed and arguments employed herein do not necessarily reflect the official views of OECD member countries.

This document and any map included herein are without prejudice to the status of or sovereignty over any territory, to the delimitation of international frontiers and boundaries and to the name of any territory, city or area.

You can copy, download or print OECD content for your own use, and you can include excerpts from OECD publications, databases and multimedia products in your own documents, presentations, blogs, websites and teaching materials, provided that suitable acknowledgment of OECD as source and copyright owner is given. All requests for public or commercial use and translation rights should be submitted to rights@oecd.org. Requests for permission to photocopy portions of this material for public or commercial use shall be addressed directly to the Copyright Clearance Center (CCC) at info@copyright.com or the Centre français d'exploitation du droit de copie (CFC) at contact@cfcopies.com.