



Reader's Guide

Data underlying the figures

The data referred to in this volume are presented in Annex B and, in greater detail, including some additional tables, on the PISA website (www.pisa.oecd.org).

Four symbols are used to denote missing data:

- a The category does not apply in the country concerned. Data are therefore missing.
- c There are too few observations or no observation to provide reliable estimates (i.e. there are fewer than 30 students or fewer than 5 schools with valid data).
- m Data are not available. These data were not submitted by the country or were collected but subsequently removed from the publication for technical reasons.
- w Data have been withdrawn or have not been collected at the request of the country concerned.

Country coverage

This publication features data on 65 countries and economies, including all 34 OECD countries and 31 partner countries and economies (see map in the section *What is PISA?*).

The statistical data for Israel are supplied by and under the responsibility of the relevant Israeli authorities. The use of such data by the OECD is without prejudice to the status of the Golan Heights, East Jerusalem and Israeli settlements in the West Bank under the terms of international law.

Two notes were added to the statistical data related to Cyprus:

1. Note by Turkey: The information in this document with reference to “Cyprus” relates to the southern part of the Island. There is no single authority representing both Turkish and Greek Cypriot people on the Island. Turkey recognises the Turkish Republic of Northern Cyprus (TRNC). Until a lasting and equitable solution is found within the context of the United Nations, Turkey shall preserve its position concerning the “Cyprus issue”.
2. Note by all the European Union Member States of the OECD and the European Union: The Republic of Cyprus is recognised by all members of the United Nations with the exception of Turkey. The information in this document relates to the area under the effective control of the Government of the Republic of Cyprus.

Calculating international averages

An OECD average corresponding to the arithmetic mean of the respective country estimates was calculated for most indicators presented in this report. The OECD average is used to compare performance across school systems. In the case of some countries, data may not be available for specific indicators, or specific categories may not apply. Readers should, therefore, keep in mind that the term “OECD average” refers to the OECD countries included in the respective comparisons.

Rounding figures

Because of rounding, some figures in tables may not exactly add up to the totals. Totals, differences and averages are always calculated on the basis of exact numbers and are rounded only after calculation.

All standard errors in this publication have been rounded to one or two decimal places. Where the value 0.0 or 0.00 is shown, this does not imply that the standard error is zero, but that it is smaller than 0.05 or 0.005, respectively.



Reporting student data

The report uses “15-year-olds” as shorthand for the PISA target population. PISA covers students who are aged between 15 years 3 months and 16 years 2 months at the time of assessment and who are enrolled in school and have completed at least 6 years of formal schooling, regardless of the type of institution in which they are enrolled and of whether they are in full-time or part-time education, of whether they attend academic or vocational programmes, and of whether they attend public or private schools or foreign schools within the country.

Reporting school data

The principals of the schools in which students were assessed provided information on their schools’ characteristics by completing a school questionnaire. Where responses from school principals are presented in this publication, they are weighted so that they are proportionate to the number of 15-year-olds enrolled in the school.

Focusing on statistically significant differences

This volume discusses only statistically significant differences or changes. These are denoted in darker colours in figures and in bold font in tables. See Annex A3 for further information.

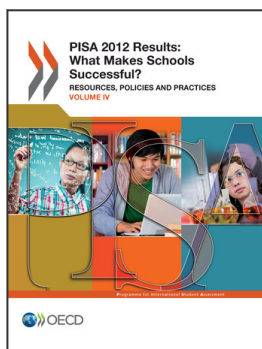
Abbreviations used in this report

ESCS	PISA index of economic, social and cultural status	PPP	Purchasing power parity
GDP	Gross domestic product	S.D.	Standard deviation
ISCED	International Standard Classification of Education	S.E.	Standard error
ISCO	International Standard Classification of Occupations	STEM	Science, Technology, Engineering and Mathematics

Further documentation

For further information on the PISA assessment instruments and the methods used in PISA, see the *PISA 2012 Technical Report* (OECD, forthcoming). The reader should note that there are gaps in the numbering of tables because some tables appear on line only and are not included in this publication. To consult the set of web-only data tables, visit the PISA website (www.pisa.oecd.org).

This report uses the OECD StatLinks service. Below each table and chart is a url leading to a corresponding Excel™ workbook containing the underlying data. These urls are stable and will remain unchanged over time. In addition, readers of the e-books will be able to click directly on these links and the workbook will open in a separate window, if their internet browser is open and running.



From:
PISA 2012 Results: What Makes Schools Successful (Volume IV)
Resources, Policies and Practices

Access the complete publication at:
<https://doi.org/10.1787/9789264201156-en>

Please cite this chapter as:

OECD (2013), "Reader's Guide", in *PISA 2012 Results: What Makes Schools Successful (Volume IV): Resources, Policies and Practices*, OECD Publishing, Paris.

DOI: <https://doi.org/10.1787/9789264201156-3-en>

This work is published under the responsibility of the Secretary-General of the OECD. The opinions expressed and arguments employed herein do not necessarily reflect the official views of OECD member countries.

This document and any map included herein are without prejudice to the status of or sovereignty over any territory, to the delimitation of international frontiers and boundaries and to the name of any territory, city or area.

You can copy, download or print OECD content for your own use, and you can include excerpts from OECD publications, databases and multimedia products in your own documents, presentations, blogs, websites and teaching materials, provided that suitable acknowledgment of OECD as source and copyright owner is given. All requests for public or commercial use and translation rights should be submitted to rights@oecd.org. Requests for permission to photocopy portions of this material for public or commercial use shall be addressed directly to the Copyright Clearance Center (CCC) at info@copyright.com or the Centre français d'exploitation du droit de copie (CFC) at contact@cfcopies.com.