

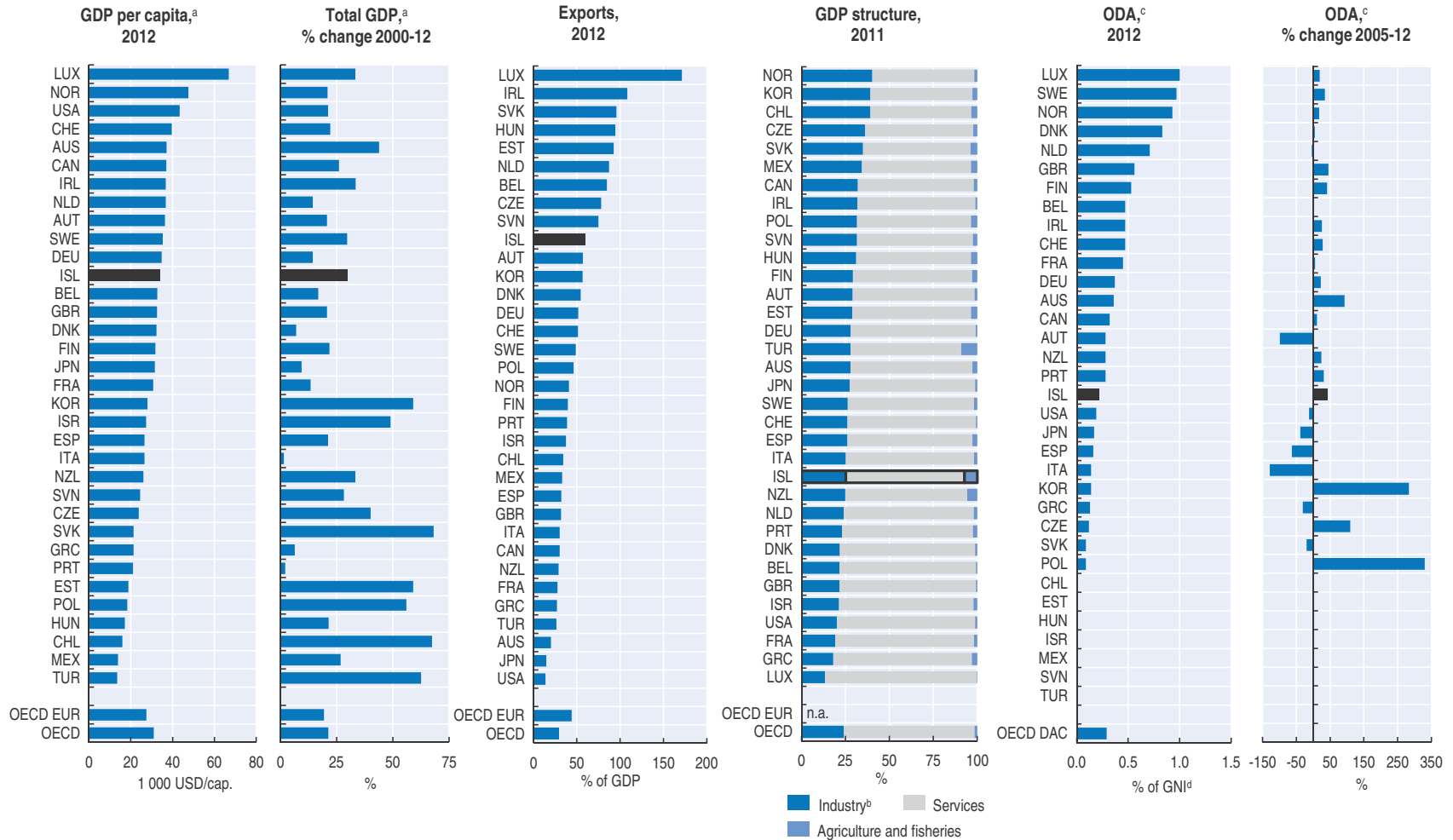
ANNEX I

*Selected data**

I.A. Selected economic data	154
I.B. Selected social data	157
I.C. Selected environmental data	158

* The statistical data for Israel are supplied by and under the responsibility of the relevant Israeli authorities. The use of such data by the OECD is without prejudice to the status of the Golan Heights, East Jerusalem and Israeli settlements in the West Bank under the terms of international law.

Annex I.A. Selected economic data* – Economic context



*) Data refer to the indicated year or to the latest available year. They may include provisional figures and estimates. Partial totals are indicated by dotted borders.

a) GDP at 2005 prices and purchasing power parities.

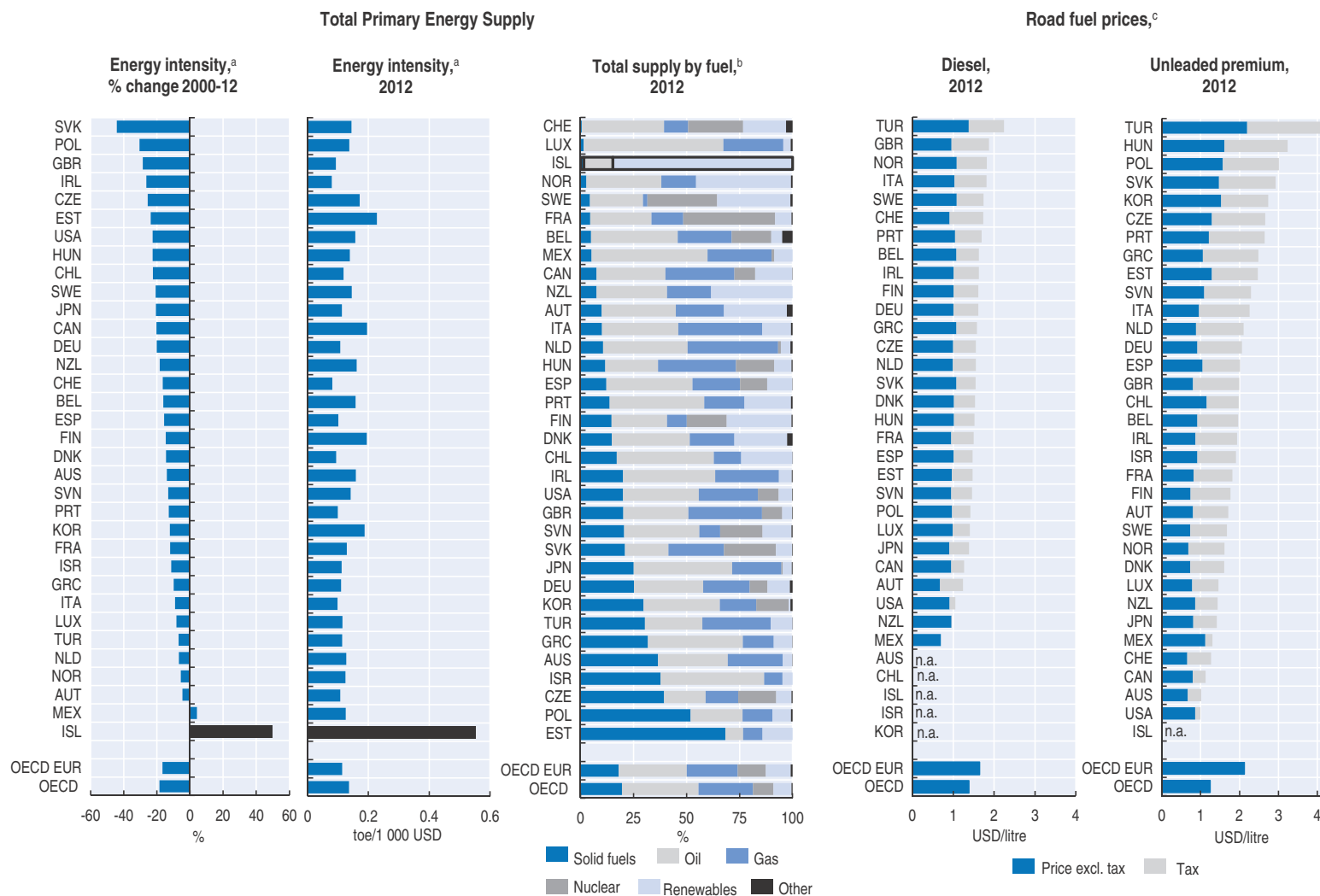
b) Includes mining and quarrying, manufacturing, gas, electricity and water, and construction.

c) Official development assistance by member countries of the OECD Development Assistance Committee. Total net disbursements at constant 2011 USD. CZE, ISL, KOR, POL and SVK became DAC members after 2005.

d) Gross national income.

Source: OECD 2014, OECD Environment Statistics (database); OECD (2014), OECD International Development Statistics (database); OECD (2013), OECD Economic Outlook No. 93 (database); OECD calculations.

Annex I.A. Selected economic data* – Energy



*) Data refer to the indicated year or to the latest available year. They may include provisional figures and estimates. Partial totals are indicated by dotted borders.

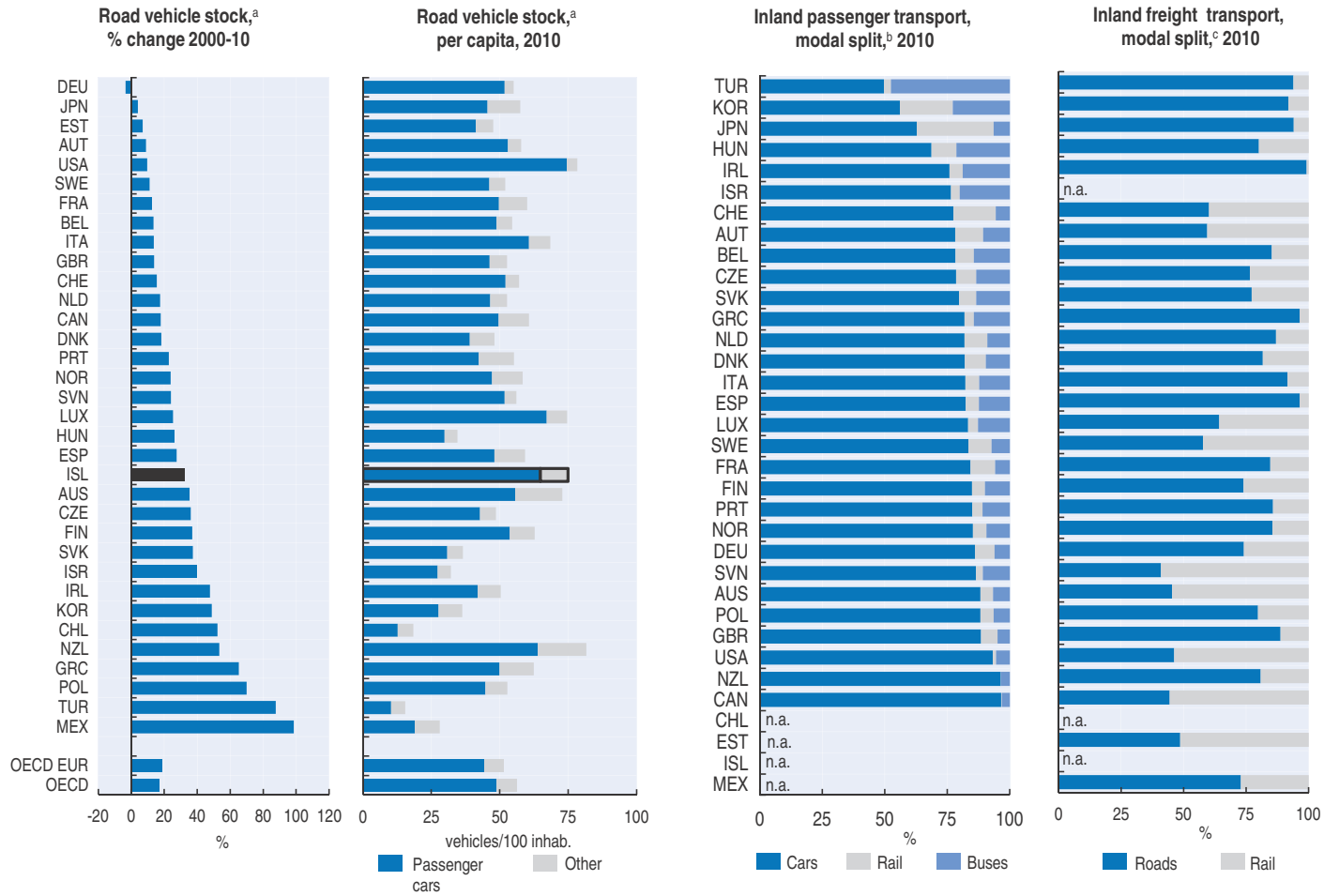
a) Total primary energy supply per unit of GDP expressed at 2005 prices and purchasing power parities.

b) The breakdown excludes trade of electricity and heat.

c) Diesel fuel: automotive diesel for commercial use, current USD; unleaded petrol: unleaded premium (RON 95), except JPN (unleaded regular), USD at current prices and purchasing power parities.

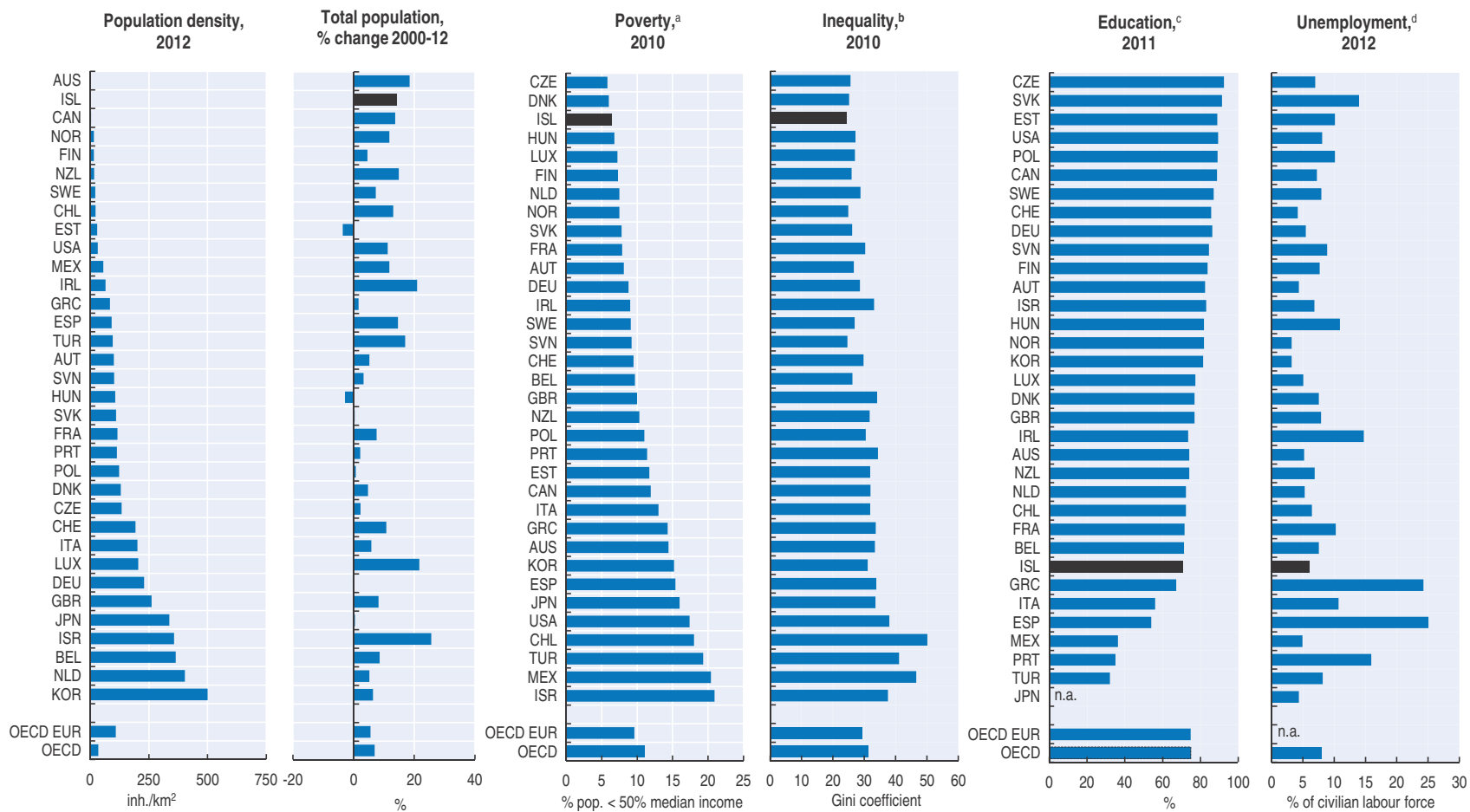
Source: IEA (2014), IEA Energy Prices and Taxes Statistics (database); IEA (2013), IEA World Energy Statistics and Balances (database); OECD calculations.

Annex I.A. Selected economic data* – Transport



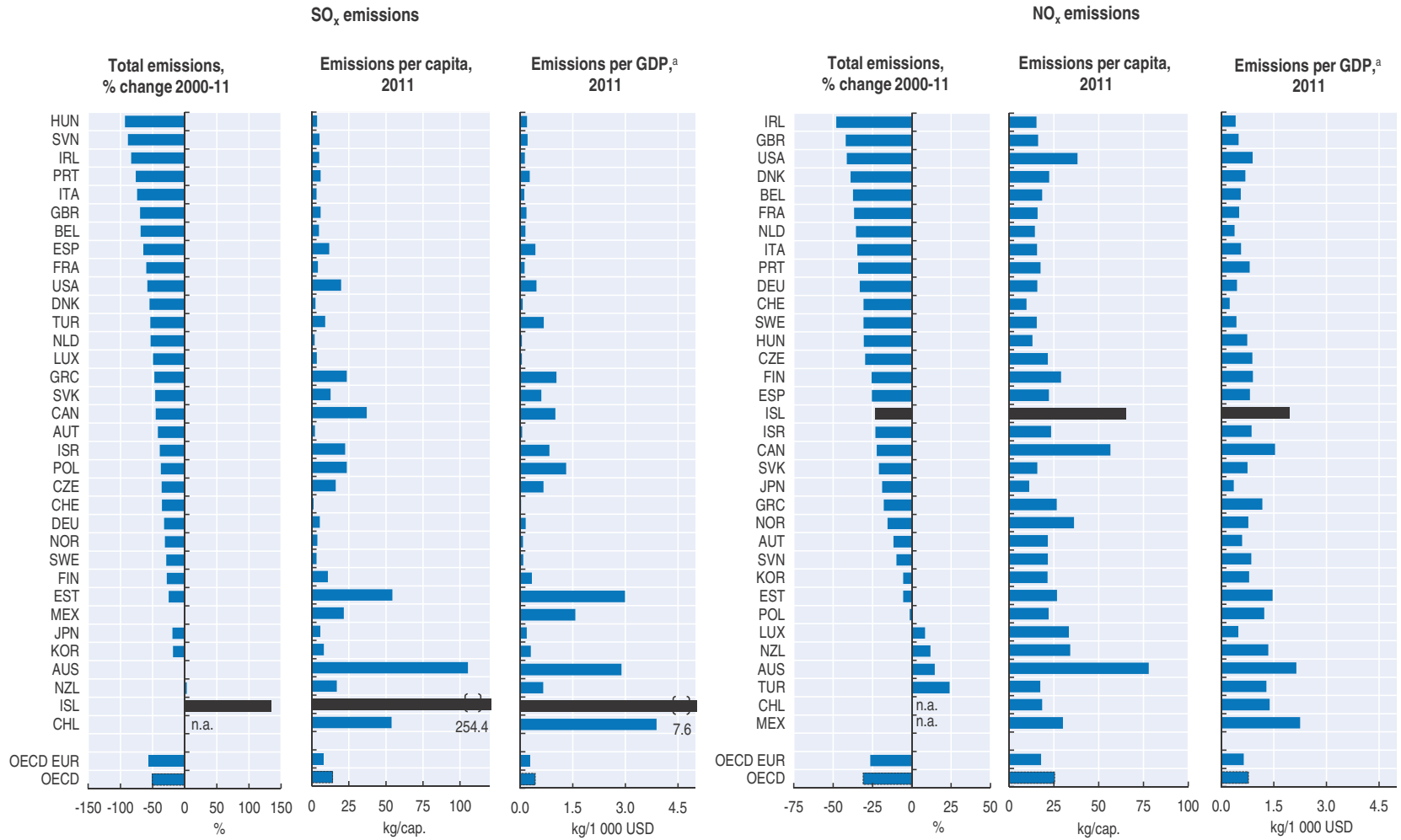
*) Data refer to the indicated year or to the latest available year. They may include provisional figures and estimates. Partial totals are indicated by dotted borders.
 a) Motor vehicles with four or more wheels.
 b) Based on values expressed in passenger/km.
 c) Based on values expressed in tonne/km.
 Source: OECD (2014), *OECD Environment Statistics* (database).

Annex I.B. Selected social data*



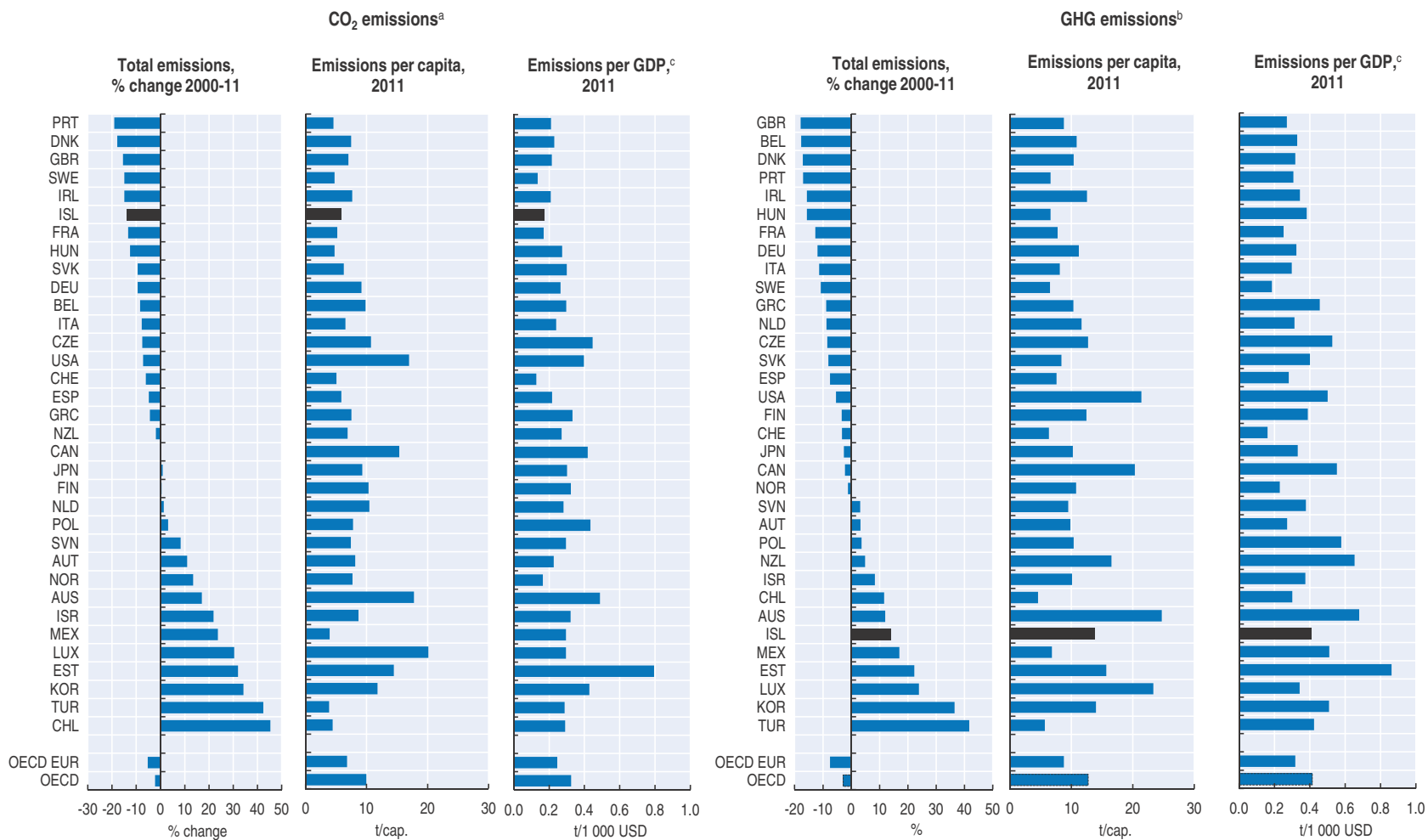
*) Data refer to the indicated year or to the latest available year. They may include provisional figures and estimates. Partial totals are indicated by dotted borders.
 a) Share of population with an income under 50% of the median income. OECD and OECD EUR: average of rates.
 b) Ranging from 0 (equal) to 100 (inequal) income distribution, based on disposable income (incl. all incomes, taxes and benefits) for the entire population. OECD and OECD EUR: average of rates.
 c) Share of population aged 25-64 years with at least upper secondary education. OECD and OECD EUR: average of rates.
 d) Harmonised unemployment rates.
 Source: OECD (2014), *Main Economic Indicators*, *OECD Education Statistics*, *OECD Environment Statistics*, *OECD Social and Welfare Statistics* (databases).

Annex I.C. Selected environmental data* – Air



*) Data refer to the indicated year or to the latest available year. They may include provisional figures and estimates. Partial totals are indicated by dotted borders.
 a) GDP at 2005 prices and purchasing power parities.
 ISL: SO_x emissions include emissions from geothermal energy. LUX: NO_x emissions exclude emissions from "fuel tourism".
 Source: OECD (2014), *OECD Environment Statistics* (database).

Annex I.C. Selected environmental data* – Climate



*) Data refer to the indicated year or to the latest available year. They may include provisional figures and estimates. Partial totals are indicated by dotted borders.

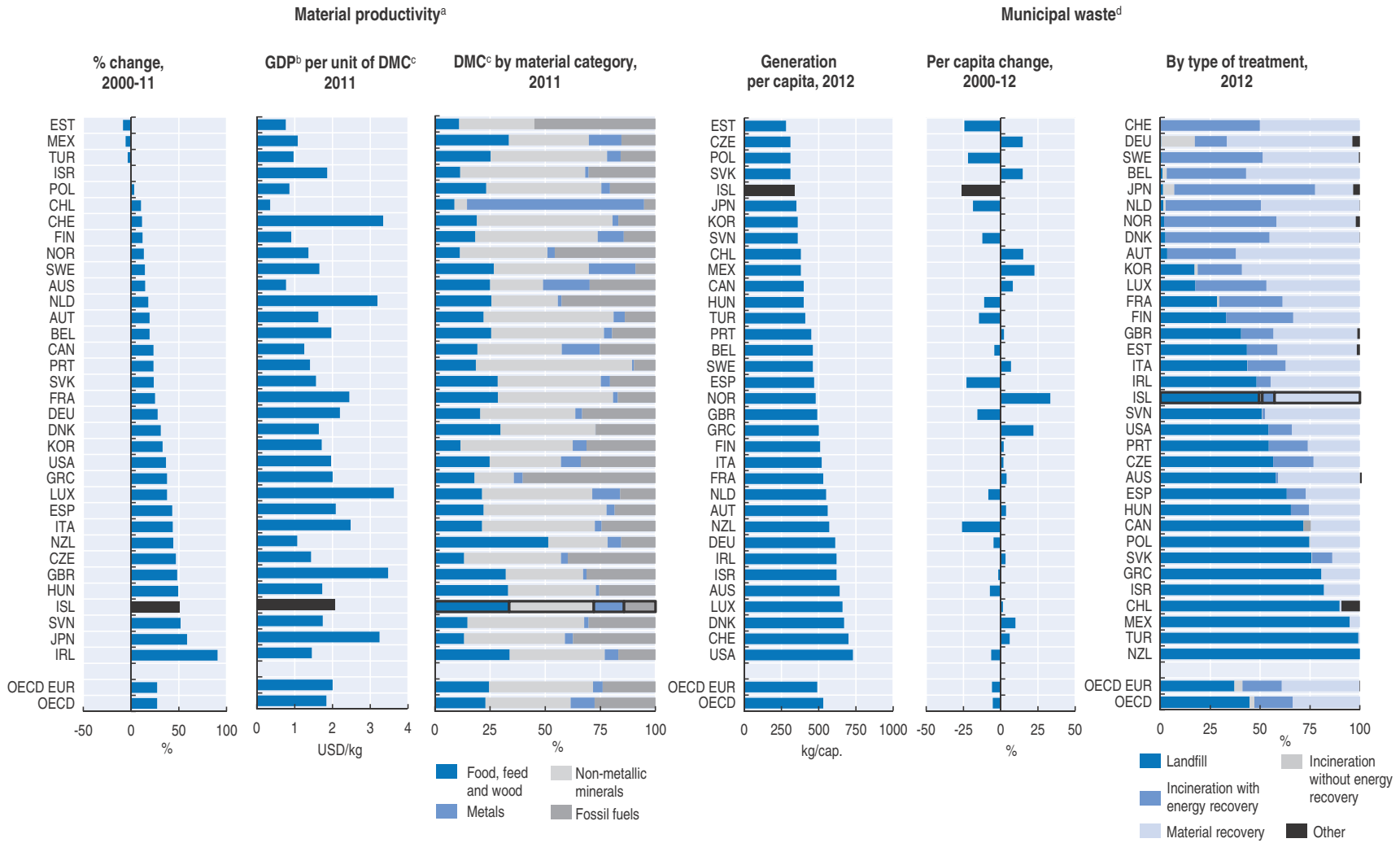
a) Emissions from energy use only; excluding international marine and aviation bunkers; sectoral approach.

b) Excluding emissions/removals from land use, land-use change and forestry. ISR: 2000 data exclude F-gases.

c) GDP at 2005 prices and purchasing power parities.

Source: IEA (2013), IEA CO₂ Emissions from Fuel Combustion Statistics (database), OECD (2014), OECD Environment Statistics (database); OECD calculations.

Annex I.C. Selected environmental data* – Material productivity and waste



*) Data refer to the indicated year or to the latest available year. They may include provisional figures and estimates. Varying definitions can limit comparability across countries. Partial totals are indicated by dotted borders.
 a) Amount of GDP generated per unit of materials used, ratio of GDP to domestic material consumption (DMC).
 b) GDP at 2005 prices and purchasing power parities.
 c) DMC equals the sum of domestic (raw material) extraction used by an economy and its physical trade balance (imports minus exports of raw materials and manufactured products).
 d) Waste collected by or for municipalities, including household, bulky and commercial waste, and similar waste handled at the same facilities. CAN: household waste only and total incineration; NZL: landfilled waste only.
 Source: OECD (2014), *OECD Environment Statistics* (database).



From:
**OECD Environmental Performance Reviews:
Iceland 2014**

Access the complete publication at:
<https://doi.org/10.1787/9789264214200-en>

Please cite this chapter as:

OECD (2014), "Selected data", in *OECD Environmental Performance Reviews: Iceland 2014*, OECD Publishing, Paris.

DOI: <https://doi.org/10.1787/9789264214200-10-en>

This work is published under the responsibility of the Secretary-General of the OECD. The opinions expressed and arguments employed herein do not necessarily reflect the official views of OECD member countries.

This document and any map included herein are without prejudice to the status of or sovereignty over any territory, to the delimitation of international frontiers and boundaries and to the name of any territory, city or area.

You can copy, download or print OECD content for your own use, and you can include excerpts from OECD publications, databases and multimedia products in your own documents, presentations, blogs, websites and teaching materials, provided that suitable acknowledgment of OECD as source and copyright owner is given. All requests for public or commercial use and translation rights should be submitted to rights@oecd.org. Requests for permission to photocopy portions of this material for public or commercial use shall be addressed directly to the Copyright Clearance Center (CCC) at info@copyright.com or the Centre français d'exploitation du droit de copie (CFC) at contact@cfcopies.com.