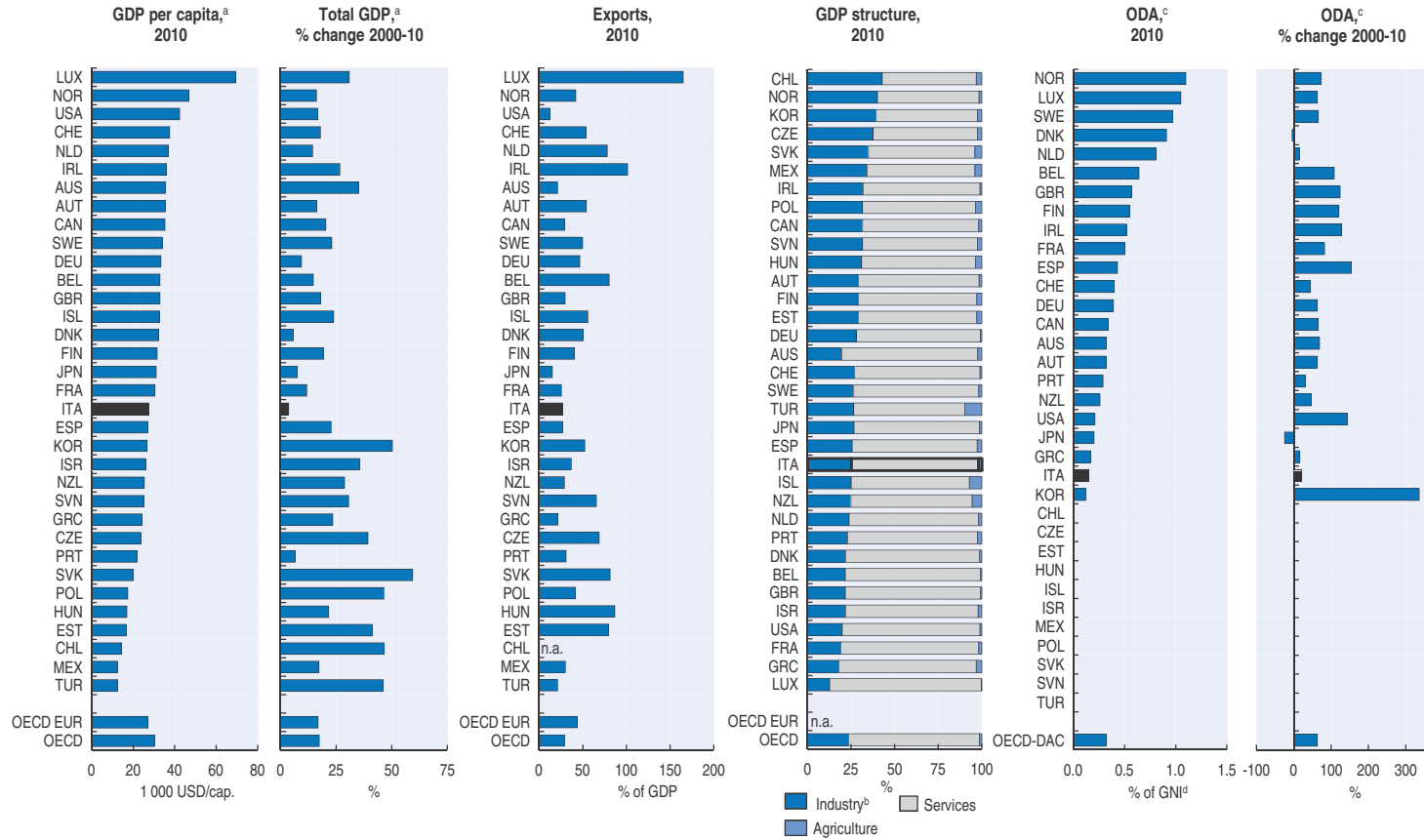
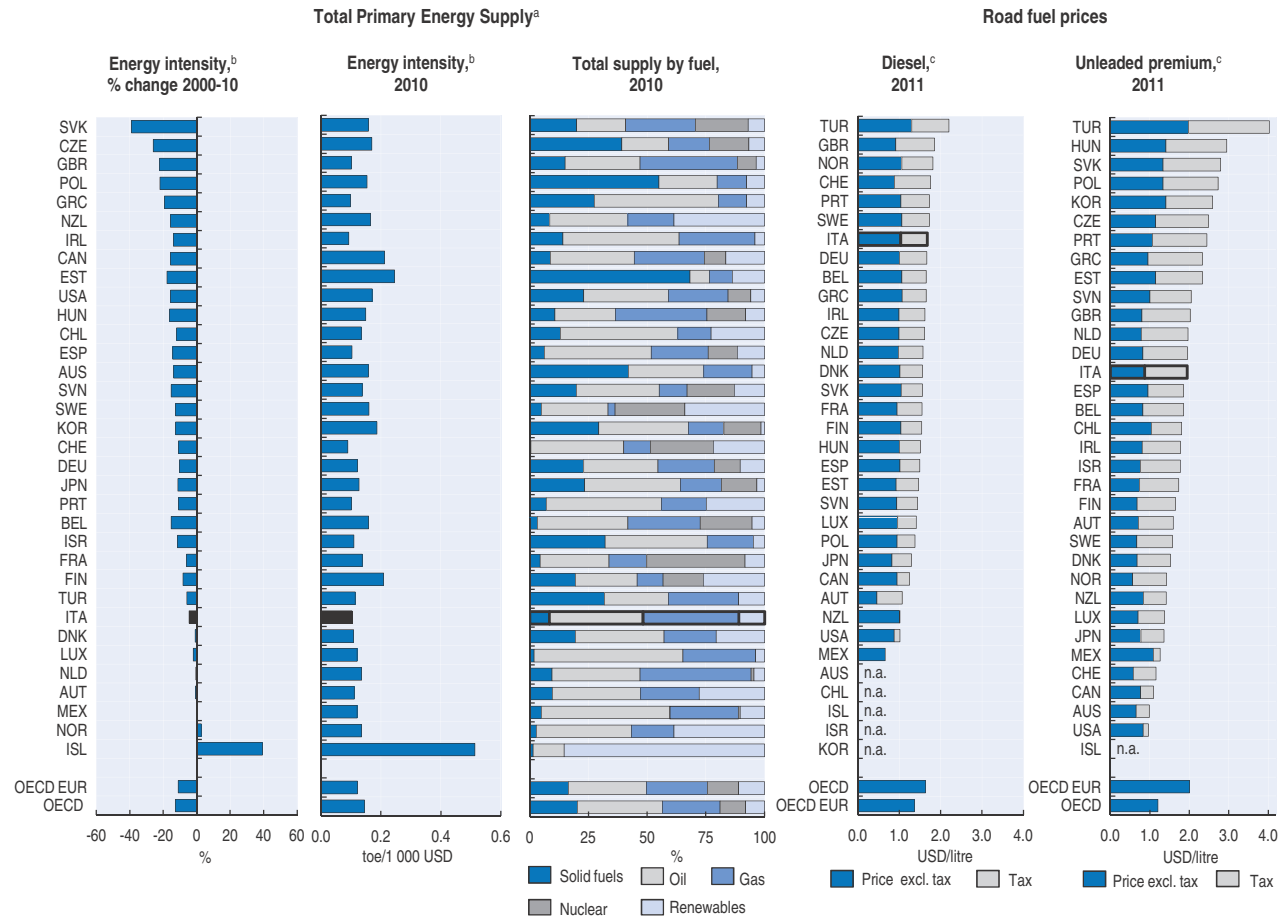


Reference I.A. Selected Economic Data* – Economic context



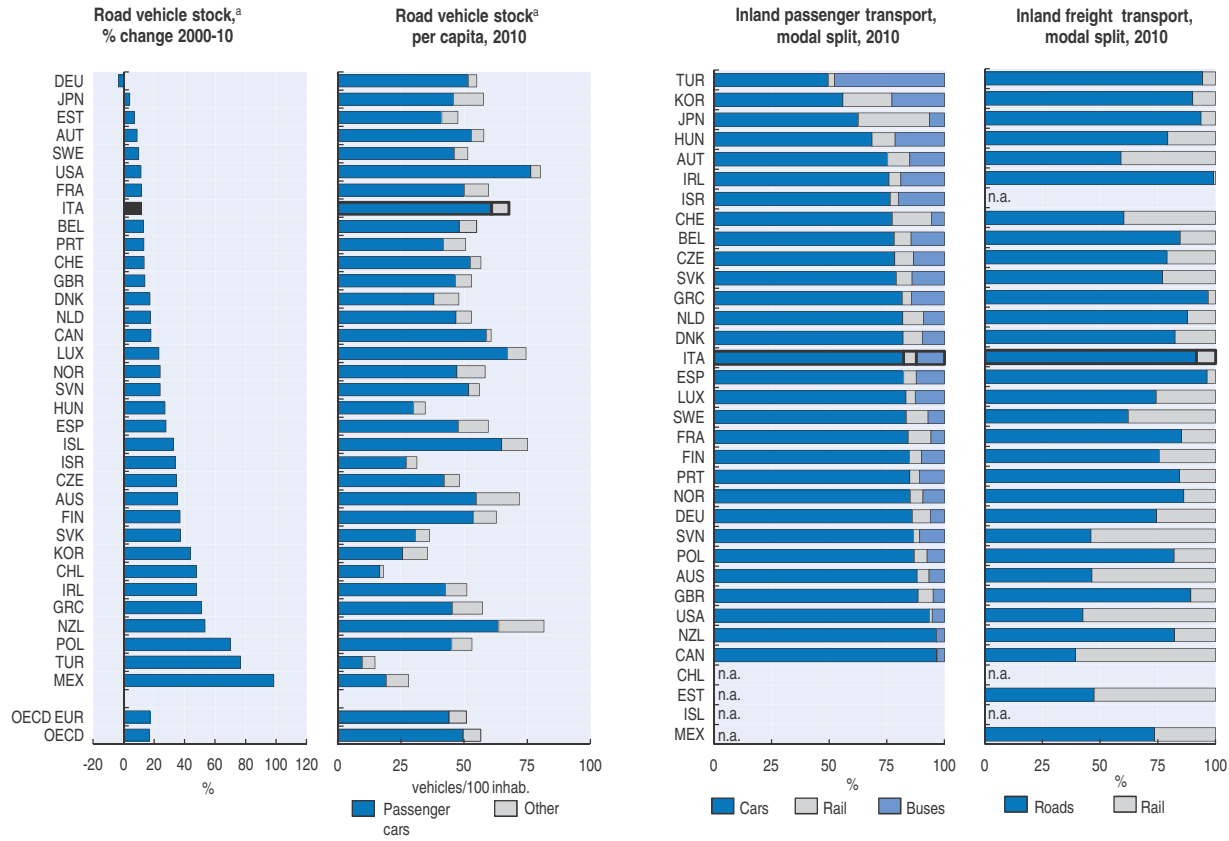
*) Data refer to the indicated year or to the latest available year. They may include provisional figures and estimates. Partial totals are indicated by dotted borders.
 a) GDP at 2005 prices and purchasing power parities.
 b) Includes mining and quarrying, manufacturing, gas, electricity and water, and construction.
 c) Official development assistance by member countries of the OECD Development Assistance Committee. Total net disbursements at constant 2010 USD.
 d) Gross national income.

Reference I.A. Selected Economic Data* – Energy



*) Data refer to the indicated year or to the latest available year. They may include provisional figures and estimates. Partial totals are indicated by dotted borders.
 a) Excluding international marine and aviation bunkers.
 b) Total primary energy supply per unit of GDP expressed at 2005 prices and purchasing power parities.
 c) Diesel fuel: automotive diesel for commercial use, current USD; Unleaded petrol: unleaded premium (RON 95): USD at current prices and purchasing power parities; JPN: regular unleaded; ISR: 2010 data.
 Source: OECD Environmental Data.

Reference I.A. Selected Economic Data* – Transport



*) Data refer to the indicated year or to the latest available year. They may include provisional figures and estimates. Partial totals are indicated by dotted borders.
 a) Motor vehicles with four or more wheels.
 Source: OECD Environmental Data.



From:
**OECD Environmental Performance Reviews: Italy
2013**

Access the complete publication at:
<https://doi.org/10.1787/9789264186378-en>

Please cite this chapter as:

OECD (2013), "Selected economic data", in *OECD Environmental Performance Reviews: Italy 2013*, OECD Publishing, Paris.

DOI: <https://doi.org/10.1787/9789264186378-10-en>

This work is published under the responsibility of the Secretary-General of the OECD. The opinions expressed and arguments employed herein do not necessarily reflect the official views of OECD member countries.

This document and any map included herein are without prejudice to the status of or sovereignty over any territory, to the delimitation of international frontiers and boundaries and to the name of any territory, city or area.

You can copy, download or print OECD content for your own use, and you can include excerpts from OECD publications, databases and multimedia products in your own documents, presentations, blogs, websites and teaching materials, provided that suitable acknowledgment of OECD as source and copyright owner is given. All requests for public or commercial use and translation rights should be submitted to rights@oecd.org. Requests for permission to photocopy portions of this material for public or commercial use shall be addressed directly to the Copyright Clearance Center (CCC) at info@copyright.com or the Centre français d'exploitation du droit de copie (CFC) at contact@cfcopies.com.