

# Statistical annex





## Methodology

The aggregate figure for Africa, when reported, does not include countries whose data are unavailable.

### Table 4. Public finances (percentage of GDP)

Where indicated, the figures are reported on a fiscal-year basis. Figures for Egypt, Eritrea, Ethiopia, Kenya, Liberia, Malawi, Rwanda, South Sudan, Tanzania, and Uganda are from July to June in the reference year. For Botswana, Lesotho, Namibia, and Swaziland, the fiscal year 2014 is from April 2013 to March 2014. For South Africa, the fiscal year 2014 is from April 2014 to March 2015.

### Table 7. Exports

The table is based on exports disaggregated at six-digit level (following the Harmonised System, rev. 2).

### Table 8. Diversification and competitiveness

The **diversification indicator** measures the extent to which exports are diversified. It is constructed as the inverse of a Herfindahl index, using disaggregated exports at four digits (following the Harmonised System, rev. 2). A higher index indicates more export diversification.

The **competitiveness indicator** has two aspects: the sectoral effect and the global competitiveness effect. In order to compute both competitiveness indicators, we decompose the growth of exports into three components: the **growth rate of total international trade** over the reference period (2010-14) (not reported); the contribution to a country's export growth of **the dynamics of the sectoral markets** where the country sells its products, assuming that its sectoral market shares are constant (a weighted average of the differences between the sectoral export growth rates – measured at the world level – and total international trade growth, the weights being the shares of the corresponding products in the country's total exports); **the competitiveness effect**, or the balance (export growth minus world growth and sector effect), measuring the contribution of changes in sectoral market shares to a country's export growth.

### Table 10. Foreign direct investment

The UNCTAD **Inward Potential Index** is based on 12 economic and structural variables measured by their respective scores on a range of 0-1 (raw data are available at [www.unctad.org/wir](http://www.unctad.org/wir)). It is the unweighted average of scores of the following: GDP per capita, the rate of growth of GDP, the share of exports in GDP, telecom infrastructure (the average number of telephone lines per 1 000 inhabitants and number of mobile phones per 1 000 inhabitants), commercial energy use per capita, share of R&D expenditures in gross national income, share of tertiary students in the population, country risk, exports of natural resources as a percentage of the world total, imports of parts and components of electronics and automobiles as a percentage of the world total, and inward FDI stock as a percentage of the world total.

### Table 11. Aid flows

The DAC countries are Australia, Austria, Belgium, Canada, the Czech Republic, Denmark, the European Union, Finland, France, Germany, Greece, Iceland, Ireland, Italy, Japan, Korea, Luxembourg, the Netherlands, New Zealand, Norway, Poland, Portugal, the Slovak Republic, Slovenia, Spain, Sweden, Switzerland, the United Kingdom, and the United States.

**Table 13. Demographic indicators**

**Infant mortality rate:** the number of child deaths under the age of one per live birth per year.

**Total fertility rate:** the average number of children per woman.

**Mortality under age five:** the probability that a new-born infant will die before the age of five.

**Table 14. Poverty and income distribution indicators**

**National poverty line:** the poverty line corresponding to the value of consumption necessary to satisfy minimum subsistence needs. It is set at two-thirds of average consumption.

**International poverty line:** the absolute poverty line corresponding to a level of income or consumption of USD 1.90 or USD 3.10 a day.

**Gini index:** an index measuring the intensity of inequality in income or consumption expenditure distribution. Perfect equality leads to a Gini index of zero and maximum inequality to a Gini index of 100.

**Share of consumption:** the share of total consumption for a decile of the population ranked by level of consumption.

**Table 15. Access to services**

**Sanitation coverage:** the percentage of the population with access to improved sanitation technologies (connection to a public sewer, connection to a septic system, pour-flush latrine, simple pit latrine or ventilated improved pit latrine).

**Water supply coverage:** the percentage of the population with access to improved water supply (household connection, public standpipe, borehole, protected dug well and protected spring or rainwater collection).

**Table 16. Basic health indicators**

**Life expectancy at birth:** the average number of years a new-born infant would live under the hypothesis that, during his or her life, the conditions of mortality remain the same as observed at birth.

**Life expectancy at birth with AIDS:** the estimated average number of years a new-born infant would live under the hypothesis that, during his or her life, the conditions of mortality remain the same as observed at birth, and that in particular, the current effect of AIDS on mortality are taken into account.

**Life expectancy at birth in the no-AIDS scenario:** the estimated number of years a new-born infant would live under the hypothesis that he/she does not contract AIDS during his/her life.

**Undernourishment prevalence:** the proportion of the population that is suffering insufficient food intake to meet dietary energy requirements continuously.

**Food availability:** the available nutritious food for human consumption expressed in kilo-calories per person per day (note that the recommended daily caloric intake for an active healthy life is 2 100 calories).

**Public share of total health expenditure:** calculated by defining public health expenditure as current and capital outlays of government, compulsory social security

schemes, extra-budgetary funds dedicated to health services delivery or financing, and grants and loans provided by international agencies, other national authorities and commercial banks.

**Private share of total health expenditure:** calculated by defining private expenditure as private insurance schemes and prepaid medical care plans, services delivered or financed by enterprises, outlays by non-governmental organisations and non-profit institutions serving mainly households, out-of-pocket payments, and other privately funded schemes not elsewhere classified, including investment outlays.

**Table 17. Major diseases**

**Healthy life expectancy at birth:** the average equivalent number of years in full health a newborn infant would live under the hypothesis that, during his/her life, the conditions of mortality and ill-health remain the same as observed at his/her birth.

**People living with HIV/AIDS:** estimated whether or not the people have developed symptoms of AIDS. HIV/AIDS adult prevalence is the estimate of the adult population (age 15-49) living with HIV/AIDS.

**Malaria:** cases of malaria reported from the different local case detection and reporting systems. These figures should be considered with caution because of the diversity of sources and probable underestimation.

**Measles incidence:** the number of new cases of measles reported during the reference year.

**DTP3:** Third dose of diphtheria, tetanus toxoids and pertussis vaccine.

**Table 19. School enrolment**

**Gross enrolment ratio:** the population enrolled in a specific level of education, regardless of age, expressed as a percentage of the official school-age pupils enrolled in that level.

**Net enrolment ratio:** the official school-age population enrolled in a specific level of education expressed as a percentage of the total population enrolled in that level.

**Table 20. Employment and remittances**

**Participation rate:** the measure of the proportion of a country's working-age population that engages actively in the labour market, either by working or looking for work. It provides an indication of the relative size of the supply of labour available to engage in the production of goods and services.

**Total unemployment:** the proportion of the labour force that does not have a job and is actively looking for work.

**Inactivity rate:** percentage of the population that is neither working nor seeking work (that is, not in the labour force).

**Table 21. Corruption Perceptions Index**

**The Corruption Perceptions Index (CPI):** a composite indicator based on surveys of business people and assessments of country analysts. A background paper presenting the methodology and validity of the CPI is available on the Transparency International website: [www.transparency.org/cpi2014/results](http://www.transparency.org/cpi2014/results)

### Tables 22 to 24. Political indicators

The political indicators presented in Tables 22 to 24 and discussed in Chapter 5 of this report measure public protests, violence by non-state actors and political hardening in African countries. The indicators have been assembled on the basis of a detailed monitoring of daily press briefs verified by the AFP, Reuters and *Marchés Tropicaux et Méditerranéens* news agencies, aiming to take into account the daily events and decisions that make up the reality of political life and government attitudes in African countries.

The methodology was first proposed by Dessus et al. (1998).<sup>1</sup> All three indicators are composites combining 4-value variables (with a scale of 0 to 3: 0: non-occurrence, 1: occurrence but weak intensity, 2: medium intensity and 3: strong intensity) and/or binary variables with values 0 and 1, with 0 being the non-occurrence of the event and 1 its occurrence. The detailed contents of each indicator are listed below.

These indices have been assembled since 1996 for 30 African countries,<sup>2</sup> and have progressively covered all 54 countries of the continent. The calculations are based on news verified by the press agencies, thereby capturing much more news than via one single newspaper. AFP's and Reuters' daily press briefs have been the source for the indicators since 2006. Before that, *Marchés Tropicaux et Méditerranéens* (MTM) served as the source for the indicators. This change in the source introduced a break in the series. Comparing both sources for 52 countries in two consecutive years (2006 and 2007), we found that the number of reported relevant events was higher in AFP, which reports daily, than in the weekly reporting by MTM. A slight upward adjustment of past data to ensure comparability has been done, using country-specific coefficients estimated for each time series. The indicators presented in the tables have been adjusted accordingly for the years 1996-2005 (the average coefficients were 1.10 for public protests, 1.04 for public violence and 1.46 for political hardening).

In AEO reports prior to 2010 the public protest and violence by non-state actors indicators were combined in a civil tensions indicator. This series has been split up into its components in the reports starting from 2011 onwards to allow for a separate analysis of these two time series. The indicators for 2015 can also be found on the AEO website: [www.africaneconomicoutlook.org](http://www.africaneconomicoutlook.org).

Further improvements to the methodology have been implemented since 2010. The motivations behind public protests and civil violence across the entire continent have been collected and analysed since 2006, allowing for a better understanding of the public demands and aspirations as well as governance issues (see Chapter 5). Historic revisions and backwards projections have been undertaken to expand and complete the series.

### Weighting methods

We assign an appropriate weight to each variable of the composite index for the "Political hardening" indicator. First, we take into account the intensity level of each variable. By construction, a "dead" victim gets attributed a higher weight than an "injured" victim: intensity value 1 corresponds to between 1 and 9 dead victims, compared to between 1 and 49 injured victims. Second, a principal component analysis was performed to assign each variable the following weights: each intensity value of police violence is multiplied by 0.261 (if dead), 0.423 (if injured) and 0.402 (if arrested). For dichotomous variables, the weights are: state of emergency (0.631), additional resources for the police (0.603), extrajudicial prosecution (0.583), prohibition of strikes (0.383), prohibition of the press (0.292), hardening of the political climate (0.253) and closure of schools (0.092).

**Table 22: Public protest**

- Strikes
  - 0 = non-occurrence
  - 1 = 1 strike or 1-999 strikers
  - 2 = 2 strikes or 1 000-5 000 strikers
  - 3 = 3 strikes or 5 000 or more strikers
- Demonstrations
  - 0 = non-occurrence
  - 1 = 1 demonstration or 1-4 999 protesters
  - 2 = 2 demonstrations or 5 000-9 999 protesters
  - 3 = 3 demonstrations or 10 000 or more protesters

**Table 23: Violence by non-state actors**

- Unrest and violence: number of dead and injured
  - 0 = none
  - 1 = 1-9 dead or 1-49 injured
  - 2 = 10-99 dead or 50-499 injured
  - 3 = 100 or more dead or 500 or more injured

**Table 24: Political hardening**

- State of emergency (0 or 1)
- Arrests and incarcerations of opponents (protesters, journalists, opposition actors) or for other political reasons
  - 0 = non-occurrence
  - 1 = between 1 and 9
  - 2 = between 10 and 99
  - 3 = 100 or more
- Additional means for police repression, judicial harassment, death threats, propaganda or censorship (0 or 1)
- Toughening of the political environment, e.g. dissolution of political parties, new law against democracy, expulsions, dismissals, curfew (0 or 1)
- Violence perpetrated by the police: number of dead and injured
  - 0 = none
  - 1 = 1-9 dead or 1-49 injured
  - 2 = 10-99 dead or 50-499 injured
  - 3 = 100 or more dead or 500 or more injured
- Extrajudicial prosecutions and executions (0 or 1)
- Bans on strikes and demonstrations (0 or 1)
- Bans on press or public debates (0 or 1)
- Closing of schools for political reasons (0 or 1)

**Table 25. Demographic projections**

The demographic trends are projected using the medium variant fertility scenario.

**Activity ratio:** the ratio between working age population (15-64 years old) and dependent age population (less than 15 or at least 65 years old). It is the inverse of the dependent ratio.

**Yearly cohort of new labour entrants:** the size of the population entering working age (15 years old) each year. It is estimated by taking the population aged 15-24 and dividing by ten.

**Total entrance inflow:** the number of new entrants into the working-age population. This refers to the population that was below 15 at the beginning of the period, and between 15 and 64 at the end of the period.

**Active population:** the population of people that furnish the supply of labour for the production of goods and services during a given period.

*Table 26. Gender indicators*

The African Development Bank's **Gender Equality Index** (AfDB GEI) reflects the status of women in Africa along three dimensions of equality: **economic opportunity** (business and employment), **human development** (education and health), and **law and institutions**. Each dimension draws on a series of indicators, measuring equality in business and employment, education, health, political representation, and legal and household rights. Countries are scored on a scale from 0 to 100, where 100 indicates perfect gender equality. For more details on computation see the technical note available at [www.afdb.org/fileadmin/uploads/afdb/Documents/Publications/African\\_Gender\\_Equality\\_Index\\_2015-EN.pdf](http://www.afdb.org/fileadmin/uploads/afdb/Documents/Publications/African_Gender_Equality_Index_2015-EN.pdf).

The OECD Development Centre's **Social Institutions and Gender Index** (SIGI) measures discriminatory social institutions, i.e formal and informal laws, social norms and practices that restrict or exclude women and consequently curtail their access to rights, justice, resources and empowerment opportunities. The SIGI scores 108 countries on 14 indicators grouped into five sub-indices: **discriminatory family code**, **restricted physical integrity**, **son bias**, **restricted resources and assets**, and **restricted civil liberties**. The SIGI is an unweighted average of a non-linear function of its five sub-indices. The SIGI and its sub-indices values are between 0 and 1, with 0 indicating very low levels of inequality and 1 indicating very high levels of inequality. For more details on computation see the technical note available at [www.genderindex.org](http://www.genderindex.org).

The United Nations Development Programme's **Gender Development Index** (GDI) measures gender gaps in human development achievements by accounting for disparities between women and men in three basic dimensions of human development – **health**, **knowledge** and **living standards** – using the same component indicators as in the Human Development Index (HDI). The GDI is the ratio of the HDIs calculated separately for women and men showing the female HDI as a percentage of the male HDI. For more details on computation see the technical note available at [hdr.undp.org/sites/default/files/hdr2015\\_technical\\_notes.pdf](http://hdr.undp.org/sites/default/files/hdr2015_technical_notes.pdf).

The United Nations Development Programme's **Gender Inequality Index** (GII) measures gender inequalities in three important aspects of human development: **reproductive health**, measured by maternal mortality ratio and adolescent birth rates; **empowerment**, measured by the proportion of parliamentary seats occupied by females and the proportion of adult females and males aged 25 years and older with at least some secondary education; and **economic status**, expressed as labour market participation and measured by the labour force participation rate of female and male populations aged 15 years and older. The higher the GII value the more disparities there are between females and males. For more details on computation see the technical note available at [hdr.undp.org/sites/default/files/hdr2015\\_technical\\_notes.pdf](http://hdr.undp.org/sites/default/files/hdr2015_technical_notes.pdf).



## Notes

1. Dessus, S., D. Lafay and C. Morrisson (1998), "A Politico-economic Model for Stabilisation in Africa", *Journal of African Economies*.
2. The following countries are included in this sample: Algeria, Benin, Botswana, Burkina Faso, Cabo Verde, Cameroon, Chad, Côte d'Ivoire, Egypt, Equatorial Guinea, Ethiopia, Gabon, Ghana, Kenya, Libya, Malawi, Mali, Mauritius, Morocco, Mozambique, Namibia, Nigeria, Senegal, South Africa, Tanzania, Togo, Tunisia, Uganda, Zambia and Zimbabwe.

Table 1. Basic indicators, 2015

	Population (thousands)	Land area (thousands of km <sup>2</sup> )	Population density (pop./km <sup>2</sup> )	GDP based on PPP valuation (USD million)	GDP per capita (PPP valuation, USD)	Annual real GDP growth (average over 2007-15)
Algeria	39 667	2 382	17	570 638	14 386	3.1
Angola	25 022	1 247	20	185 246	7 403	6.2
Benin	10 880	115	95	21 156	1 945	4.5
Botswana	2 262	582	4	37 160	16 424	4.7
Burkina Faso	18 106	274	66	31 184	1 722	5.9
Burundi	11 179	28	402	7 882	705	3.4
Cabo Verde	521	4	129	3 479	6 684	3.0
Cameroon	23 344	475	49	72 109	3 089	4.1
Central African Republic	4 900	623	8	3 052	623	-1.4
Chad	14 037	1 284	11	32 003	2 280	5.0
Comoros	788	2	424	1 214	1 539	1.7
Congo	4 620	342	14	28 919	6 259	4.4
Congo, Dem. Rep.	77 267	2 345	33	63 266	819	6.9
Côte d'Ivoire	22 702	322	70	78 335	3 451	4.6
Djibouti	888	23	38	3 093	3 484	5.2
Egypt*	91 508	1 001	91	995 969	10 884	4.1
Equatorial Guinea	845	28	30	25 944	30 701	6.8
Eritrea	5 228	118	44	7 939	1 519	1.9
Ethiopia*	99 391	1 104	90	159 224	1 602	10.5
Gabon	1 725	268	6	34 409	19 944	4.5
Gambia	1 991	11	176	3 269	1 642	3.7
Ghana	27 410	239	115	113 349	4 135	6.7
Guinea	12 609	246	51	15 276	1 212	2.2
Guinea-Bissau	1 844	36	51	2 676	1 451	3.3
Kenya	46 050	580	79	143 051	3 106	5.1
Lesotho	2 135	30	70	5 777	2 706	4.7
Liberia	4 503	111	40	3 781	840	6.3
Libya	6 278	1 760	4	92 875	14 793	0.2
Madagascar	24 235	587	41	35 556	1 467	2.6
Malawi	17 215	118	145	20 558	1 194	5.6
Mali	17 600	1 240	14	29 151	1 656	3.9
Mauritania	4 068	1 031	4	16 427	4 039	3.7
Mauritius	1 273	2	624	24 509	19 250	4.0
Morocco	34 378	447	77	274 526	7 986	4.1

Table 1. Basic indicators, 2015 (cont.)

	Population (thousands)	Land area (thousands of km <sup>2</sup> )	Population density (pop. / km <sup>2</sup> )	GDP based on PPP valuation (USD million)	GDP per capita (PPP valuation, USD)	Annual real GDP growth (average over 2007-15)
Mozambique	27 978	799	35	33 726	1 205	7.0
Namibia	2 459	824	3	24 839	10 102	4.6
Niger	19 899	1 267	16	18 960	953	5.6
Nigeria	182 202	924	197	1 105 343	6 067	6.0
Rwanda	11 610	26	441	20 321	1 750	7.5
Sao Tome and Principe	190	1	198	664	3 488	4.8
Senegal	15 129	197	77	36 300	2 399	3.8
Seychelles	96	0.460	210	2 533	26 259	4.7
Sierra Leone	6 453	72	90	9 832	1 524	5.1
Somalia	10 787	638	17	...	...	...
South Africa	54 490	1 219	45	724 010	13 287	2.3
South Sudan	12 340	644	19	22 461	1 820	9.0
Sudan	40 235	1 879	21	167 421	4 161	4.0
Swaziland	1 287	17	74	10 869	8 446	1.9
Tanzania	53 470	947	56	138 304	2 587	6.7
Togo	7 305	57	129	10 816	1 481	4.1
Tunisia	11 254	164	69	127 213	11 304	2.7
Uganda	39 032	242	162	79 753	2 043	6.5
Zambia	16 212	753	22	64 647	3 988	7.0
Zimbabwe	15 603	391	40	27 916	1 789	3.1
<b>AFRICA</b>	<b>1 184 501</b>	<b>30 066</b>	<b>39</b>	<b>5 768 932</b>	<b>4870</b>	<b>4.6</b>

Note: \* For Egypt and Ethiopia, fiscal year July (n-1)/June (n).

Sources: United Nations, Department of Economic and Social Affairs, Population Division, World Population Prospects, The 2015 Revision. AfDB Statistics Department, various domestic authorities and AfDB estimates.

Table 2. Real GDP growth rates, 2007-17

	2007	2008	2009	2010	2011	2012	2013	2014	2015 (e)	2016 (p)	2017 (p)
Algeria	3.4	2.4	1.6	3.6	2.8	3.3	2.8	3.8	3.9	3.4	3.0
Angola	14.0	11.2	2.4	3.4	3.9	5.2	6.8	4.8	3.8	3.3	3.5
Benin	4.6	5.0	2.7	2.6	3.3	5.4	5.6	6.5	5.2	5.5	5.7
Botswana	8.3	6.2	-7.7	8.6	6.0	4.8	9.3	4.4	2.5	3.2	3.5
Burkina Faso	4.1	5.8	2.9	8.4	6.6	9.0	6.6	5.0	4.8	5.0	5.9
Burundi	3.5	4.9	3.8	5.1	4.0	4.4	4.5	4.7	-4.1	3.3	4.4
Cabo Verde	8.6	6.7	-1.3	1.5	4.0	1.1	0.8	1.8	3.6	4.0	4.0
Cameroon	3.3	2.9	1.9	3.3	4.1	4.6	5.6	5.9	5.7	5.3	5.1
Central African Republic	4.6	2.1	1.7	3.0	3.3	4.1	-36.1	1.0	4.1	5.2	6.0
Chad	3.1	2.5	2.8	13.6	0.1	8.9	3.9	6.3	4.1	2.6	4.9
Comoros	0.8	0.6	1.1	2.2	2.5	3.0	3.5	0.6	1.1	4.1	4.1
Congo	-1.6	5.9	7.5	8.7	3.4	3.8	4.9	6.0	1.2	4.2	4.7
Congo, Dem. Rep.	6.3	6.2	2.8	7.2	6.9	7.2	8.5	9.2	7.7	7.0	8.0
Côte d'Ivoire	1.6	2.3	3.8	2.4	-4.7	10.7	8.7	7.9	8.8	8.6	8.3
Djibouti	5.1	5.8	5.0	3.5	4.5	4.8	5.0	6.0	6.7	7.4	7.1
Egypt*	7.1	7.2	4.9	4.8	1.8	2.2	2.1	2.2	4.2	4.3	4.5
Equatorial Guinea	24.8	20.8	19.0	-0.8	7.7	9.5	-12.1	2.3	-10.2	-8.0	-3.4
Eritrea	1.4	-9.8	3.9	2.2	8.7	7.0	1.3	1.7	0.3	2.2	3.4
Ethiopia*	11.5	10.8	8.8	12.4	11.2	8.6	10.6	10.3	10.2	8.1	7.7
Gabon	4.8	5.3	-2.7	6.9	7.0	5.3	5.6	4.4	4.2	4.5	5.1
Gambia	3.6	5.7	6.4	6.5	-4.3	5.3	4.3	0.9	4.7	5.5	5.6
Ghana	6.5	8.4	4.0	3.4	14.0	9.3	7.3	4.0	3.7	5.8	8.7
Guinea	1.8	4.9	-0.3	1.9	3.9	3.9	2.3	1.1	0.1	4.0	4.8
Guinea-Bissau	3.2	3.2	3.3	4.4	9.4	-1.8	0.8	2.7	4.8	5.7	6.2
Kenya	6.9	0.2	3.3	8.4	6.1	4.6	5.7	5.3	5.5	6.0	6.4
Lesotho	4.7	5.7	3.4	7.9	4.0	5.0	4.5	3.6	3.4	2.6	2.9
Liberia	13.0	6.2	5.4	6.3	7.9	8.3	8.7	0.7	0.4	2.8	4.4
Libya	6.4	2.7	-0.8	4.3	-61.4	92.1	-12.3	-23.5	-6.0	-0.8	3.9
Madagascar	6.5	7.2	-3.5	0.1	1.5	2.5	2.4	3.3	3.2	4.0	4.5
Malawi	5.5	8.6	7.6	9.5	3.8	1.9	5.2	5.7	2.9	4.0	4.9
Mali	4.3	5.0	4.5	5.8	2.7	0.0	1.7	5.8	5.2	5.2	5.0
Mauritania	2.8	1.1	-1.0	4.8	4.4	6.0	5.5	6.6	3.1	3.5	4.5
Mauritius	5.4	5.5	3.1	4.2	3.9	3.2	3.2	3.6	3.7	3.8	3.7
Morocco	3.5	5.9	4.2	3.8	5.2	3.0	4.7	2.4	4.5	1.8	3.5

Table 2. Real GDP growth rates, 2007-17 (cont.)

	2007	2008	2009	2010	2011	2012	2013	2014	2015 (e)	2016 (p)	2017 (p)
Mozambique	7.3	6.8	6.5	7.1	7.4	7.1	7.4	7.2	6.3	6.5	7.5
Namibia	5.4	2.6	0.3	6.0	5.1	5.1	5.7	6.4	4.4	4.2	6.0
Niger	3.1	9.6	-0.7	8.4	2.3	11.8	5.3	7.0	3.6	5.0	5.5
Nigeria	6.4	6.0	7.0	10.6	4.9	4.3	5.4	6.2	3.0	3.8	5.0
Rwanda	7.6	11.2	6.3	7.3	7.9	8.8	4.7	7.0	7.1	6.8	7.2
Sao Tome and Principe	2.0	9.1	4.0	4.5	4.9	4.6	4.2	4.5	5.3	5.0	5.4
Senegal	5.0	3.7	2.4	4.2	1.8	4.4	3.5	4.3	5.1	6.0	6.5
Seychelles	10.4	-2.1	-1.1	5.9	7.9	6.0	6.6	3.7	4.6	3.1	3.7
Sierra Leone	8.0	5.2	3.2	5.3	6.0	15.2	20.1	4.6	-21.5	0.2	3.7
Somalia	...	...	...	...	...	...	...	...	...	...	...
South Africa	5.4	3.2	-1.5	3.0	3.2	2.2	2.2	1.5	1.3	0.7	1.8
South Sudan	...	...	...	...	...	...	29.3	15.9	-5.3	0.7	8.8
Sudan	5.8	3.8	4.5	6.5	0.9	1.4	4.4	3.6	5.3	6.2	6.0
Swaziland	3.5	2.4	1.3	1.9	-0.6	1.9	3.0	2.5	1.7	0.8	1.7
Tanzania	8.5	5.6	5.4	6.4	7.9	5.1	7.3	7.0	7.0	7.2	7.2
Togo	2.1	2.4	3.4	4.0	4.8	4.8	4.0	5.9	5.5	5.9	6.0
Tunisia	6.3	4.5	3.1	3.0	-1.9	3.9	2.4	2.3	0.5	2.0	2.4
Uganda	8.1	10.4	8.1	7.7	6.8	2.6	4.4	4.7	5.3	5.1	5.8
Zambia	8.4	7.8	9.2	10.3	6.4	6.8	6.7	5.0	3.7	3.6	4.9
Zimbabwe	-3.7	-17.7	5.3	11.4	11.9	10.6	4.5	3.8	1.5	1.6	3.1
<b>AFRICA</b>	<b>6.1</b>	<b>5.3</b>	<b>3.5</b>	<b>5.8</b>	<b>2.9</b>	<b>6.4</b>	<b>3.9</b>	<b>3.7</b>	<b>3.6</b>	<b>3.7</b>	<b>4.5</b>

Note: \* For Egypt and Ethiopia, fiscal year July (n-1)/June (n).

Sources: AfDB Statistics Department, various domestic authorities and AfDB (e) estimates and (p) projections.

Table 3. Demand composition and growth rate, 2014-17

	2014						2015 (e)			2016 (p)			2017 (p)					
	Final consumption		Gross capital formation		External sector		Total final consumption	Gross capital formation total	Exports	Imports	Total final consumption	Gross capital formation total	Exports	Imports	Total final consumption	Gross capital formation total	Exports	Imports
	Private	Public	Private	Public	Exports	Imports												
	% of GDP																	
Algeria	36.4	19.4	16.9	28.7	30.5	32.0	9.2	0.6	-1.5	3.6	0.2	6.8	3.0	2.1	1.9	6.6	-0.6	3.3
Angola	34.9	30.2	5.3	23.7	40.7	34.7	-9.0	-29.1	23.6	-22.7	0.0	12.5	0.8	1.0	5.8	9.3	-4.0	0.9
Benin	68.0	15.9	19.6	5.4	36.1	45.1	3.6	8.1	1.6	1.3	6.3	14.1	3.7	10.7	6.7	5.7	5.3	6.9
Botswana	46.0	16.4	22.3	8.3	62.2	55.2	-5.5	4.6	3.8	-4.2	5.5	17.0	-1.1	9.9	3.3	-7.2	5.3	-2.8
Burkina Faso	86.1	12.2	4.5	6.3	21.9	30.9	2.9	10.2	3.7	0.5	3.7	11.4	5.0	3.8	4.8	13.2	3.1	4.0
Burundi	79.1	15.1	16.6	16.5	10.4	37.6	-11.9	-5.9	5.8	-18.5	9.7	-14.1	1.2	-0.3	5.9	4.7	1.3	7.0
Cabo Verde	59.0	26.9	26.9	6.6	52.3	71.7	-7.5	8.0	6.9	-4.6	0.5	-1.3	7.0	-0.5	2.2	-6.3	7.2	-0.9
Cameroon	76.9	11.8	18.2	2.5	21.7	31.2	4.4	7.8	7.5	4.8	4.2	10.6	5.3	5.8	4.7	10.1	2.6	6.0
Central African Republic	106.5	8.1	8.1	2.1	12.3	37.1	2.2	4.2	10.9	1.5	0.4	11.1	23.3	0.8	2.1	29.1	9.6	4.9
Chad	74.4	7.7	20.9	9.6	31.5	44.1	0.6	1.7	9.1	-0.5	2.5	1.7	2.6	1.7	-0.7	3.8	14.8	0.7
Comoros	100.5	14.4	10.6	8.0	17.0	50.5	-3.3	3.5	5.5	-6.0	4.7	2.7	3.7	4.7	7.2	-7.4	3.5	6.0
Congo	29.7	16.4	42.1	21.4	69.9	79.4	5.2	-15.8	9.9	-6.0	3.5	-12.7	10.3	-6.2	4.1	-2.5	1.0	-5.1
Congo, Dem. Rep.	80.7	11.5	9.3	6.4	33.8	41.8	2.7	10.6	12.0	5.3	7.6	1.3	9.2	8.4	18.2	11.9	7.4	26.0
Côte d'Ivoire	71.7	8.7	10.8	6.0	42.3	39.4	7.3	22.6	6.6	9.0	5.7	9.5	9.5	4.5	11.7	15.2	-0.7	8.1
Djibouti	65.5	22.6	14.1	30.0	32.1	64.3	7.6	10.5	0.8	7.2	7.6	10.7	2.0	7.1	9.1	7.1	1.8	6.9
Egypt*	82.7	12.0	8.1	5.7	14.4	23.0	3.4	11.9	0.3	4.6	3.7	8.6	2.6	4.8	3.9	8.6	2.8	5.0
Equatorial Guinea	16.8	6.9	21.2	26.7	95.6	67.1	20.4	24.8	-4.5	5.0	9.8	-6.8	5.3	1.4	13.0	1.3	0.0	2.8
Eritrea	78.3	19.3	2.0	6.0	18.9	24.5	12.6	7.0	-6.8	29.4	6.3	5.4	0.0	11.8	-0.6	5.5	5.3	-1.7
Ethiopia*	70.2	9.2	10.7	27.3	11.6	29.1	5.3	31.4	-2.0	23.0	14.4	4.7	1.9	13.4	11.6	4.7	3.2	10.0
Gabon	32.4	16.4	20.0	6.7	56.7	32.4	5.9	2.5	1.3	1.4	3.5	-3.3	6.4	-0.3	3.6	2.5	5.3	1.1
Gambia	84.8	10.2	13.2	11.3	29.6	49.1	7.1	3.9	-4.4	4.1	6.2	11.0	1.0	7.9	1.1	22.1	5.8	4.2
Ghana	64.3	18.0	22.2	5.0	39.5	48.9	-0.6	9.0	2.0	-4.3	5.3	-5.4	18.0	4.5	19.1	1.8	1.1	23.6
Guinea	89.4	11.5	12.6	5.7	25.7	44.8	-3.1	12.1	-3.8	-1.0	5.8	-7.5	0.4	-1.7	1.4	8.7	3.8	0.1
Guinea-Bissau	91.5	11.9	3.3	4.7	20.6	32.0	3.9	10.5	15.1	9.8	9.5	9.1	-10.9	6.1	2.3	8.1	14.5	0.1
Kenya	82.1	14.0	15.6	5.7	16.4	33.9	8.4	0.7	1.2	7.5	4.9	8.1	0.7	2.1	11.3	-13.5	0.9	4.6
Lesotho	92.2	35.0	19.6	14.4	40.0	101.2	-1.8	9.2	1.5	-2.7	-4.6	4.5	6.0	-6.9	-0.7	7.3	1.5	-0.9
Liberia	73.0	23.4	15.1	7.6	29.9	49.0	28.4	77.8	-36.6	38.9	-25.5	34.0	41.3	-0.1	-12.0	2.0	10.3	-9.4
Libya	44.7	52.1	23.6	7.9	33.5	61.9	2.4	-1.4	-18.3	1.6	1.9	-19.3	2.0	-5.6	3.4	-5.9	8.6	0.7
Madagascar	78.5	10.2	11.6	3.9	32.8	37.1	0.4	8.2	1.0	-2.7	3.0	10.1	3.0	3.8	5.8	13.4	-0.2	7.6
Malawi	78.7	12.5	10.1	4.0	34.0	39.3	-1.0	14.8	3.8	-4.2	2.4	1.9	1.7	-4.5	5.3	7.5	-0.3	3.2

Table 3. Demand composition and growth rate, 2014-17 (cont.)

	2014										2015 (e)			2016 (p)			2017 (p)		
	Final consumption		Gross capital formation			External sector		Total final consumption	Gross capital formation total	Exports	Imports	Total final consumption	Gross capital formation total	Exports	Imports	Total final consumption	Gross capital formation total	Exports	Imports
	Private	Public	Private	Public	Exports	Imports													
	% of GDP																		
Mali	63.8	17.3	14.4	11.9	24.3	31.8	6.6	3.2	1.5	4.5	8.6	4.0	-3.1	7.6	2.8	4.8	4.0	-1.2	
Mauritania	61.2	21.9	37.1	9.3	43.0	72.4	1.8	7.4	2.3	3.6	3.9	9.1	2.1	6.4	3.2	7.6	4.9	5.2	
Mauritius	73.9	14.5	18.2	4.9	51.5	63.0	6.8	6.4	3.1	7.7	-2.0	6.4	7.1	0.7	0.2	4.0	4.1	0.3	
Morocco	60.3	19.9	28.3	3.9	34.3	46.6	5.2	7.0	2.5	5.9	1.3	4.1	1.8	2.6	4.0	6.0	2.5	5.2	
Mozambique	73.4	25.6	31.9	14.3	30.7	75.9	5.3	13.6	-4.9	3.6	1.8	-2.3	-3.0	-8.3	-3.1	3.7	5.7	-9.0	
Namibia	64.5	27.5	29.8	4.4	39.9	66.1	-1.8	2.4	8.4	-3.6	4.4	-8.6	4.0	-3.5	-5.1	13.5	12.6	-3.1	
Niger	65.5	15.0	26.7	11.1	21.0	39.2	4.5	14.2	-15.4	5.5	2.4	13.0	2.0	6.4	4.6	-1.3	16.8	1.0	
Nigeria	70.9	7.4	10.3	5.5	18.4	12.5	-7.0	5.8	33.3	-0.9	-6.0	-1.4	28.2	-2.9	9.2	10.4	-6.7	3.1	
Rwanda	75.0	15.5	13.0	13.0	14.8	31.3	7.7	7.6	4.1	7.9	6.9	7.0	3.0	5.4	6.7	10.5	2.7	7.0	
Sao Tome and Principe	92.2	13.1	15.5	15.7	9.7	46.2	-0.2	7.4	7.1	-1.2	4.3	4.5	1.6	2.9	4.2	3.7	0.2	1.1	
Senegal	77.7	16.6	18.1	6.8	28.1	47.2	8.8	7.1	2.7	12.6	4.0	2.5	6.1	0.1	2.3	4.1	8.4	-2.6	
Seychelles	54.6	26.3	30.0	6.6	78.6	96.1	20.7	52.8	0.4	38.0	7.1	28.3	5.2	19.8	0.8	16.7	9.8	11.0	
Sierra Leone	100.5	10.2	7.9	5.4	39.8	63.8	-30.7	6.7	-12.8	-21.4	-1.6	17.2	-2.3	2.0	7.6	11.8	0.1	8.7	
Somalia	...	...	...	...	...	...	...	...	...	...	...	...	...	...	...	...	...	...	...
South Africa	60.6	20.9	13.3	7.1	31.3	33.1	0.4	3.1	1.8	0.5	-1.3	3.7	1.1	-2.5	1.5	4.0	-0.9	-0.2	
South Sudan	...	...	...	...	...	...	...	...	...	...	...	...	...	...	...	...	...	...	...
Sudan	80.2	9.6	11.8	3.6	6.4	11.6	3.9	13.5	0.6	6.9	6.0	11.0	1.5	10.6	4.7	10.9	2.6	5.1	
Swaziland	77.1	19.0	4.0	5.2	49.8	55.2	2.9	10.7	-0.7	3.8	-1.1	7.3	-0.2	-2.5	0.0	8.8	1.1	-0.5	
Tanzania	65.6	13.8	26.2	4.8	19.5	29.9	8.8	10.5	5.3	13.3	8.0	10.7	2.5	9.8	8.1	9.3	4.3	9.7	
Togo	81.1	14.2	13.8	9.4	39.7	58.1	7.0	5.6	-0.2	4.4	7.0	5.7	4.9	7.0	5.1	4.3	5.7	3.6	
Tunisia	69.1	18.7	14.4	8.8	45.0	55.9	-0.5	1.0	-1.5	-2.7	1.1	0.5	2.3	-0.1	1.8	1.6	3.3	1.7	
Uganda	76.4	9.1	21.3	4.8	16.9	28.4	6.6	3.2	6.8	7.6	5.9	4.2	4.0	5.8	6.2	4.5	3.5	4.4	
Zambia	52.7	9.0	31.7	3.1	41.8	38.3	18.9	6.9	-15.3	7.4	-1.9	8.2	1.9	-3.0	1.8	6.0	3.1	-0.9	
Zimbabwe	88.1	24.1	10.5	2.7	27.1	52.5	10.9	2.4	5.1	20.8	0.2	8.3	2.3	0.9	1.3	6.1	6.3	1.8	

Note: \* For Egypt and Ethiopia, fiscal year July (n-1)/June (n).

Sources: AfDB Statistics Department, various domestic authorities and AfDB (e) estimates and (p) projections.

Table 4. Public finances, 2014-17 (percentage of GDP)

	2014			2015 (e)			2016 (p)			2017 (p)		
	Total revenue and grants	Total expenditure and net lending	Overall balance	Total revenue and grants	Total expenditure and net lending	Overall balance	Total revenue and grants	Total expenditure and net lending	Overall balance	Total revenue and grants	Total expenditure and net lending	Overall balance
Algeria	33.4	41.7	-8.3	26.9	42.9	-16.0	25.7	41.2	-15.4	26.3	41.0	-14.7
Angola	30.1	35.7	-5.6	25.9	30.0	-4.1	25.0	30.5	-5.5	24.7	30.4	-5.6
Benin	17.4	19.4	-1.9	17.7	22.0	-4.3	18.4	22.0	-3.6	18.3	22.0	-3.7
Botswana**	37.8	32.2	5.6	38.4	34.8	3.6	36.0	38.8	-2.8	36.2	38.5	-2.3
Burkina Faso	21.4	23.2	-1.8	22.1	24.6	-2.5	21.8	24.9	-3.1	21.7	25.4	-3.7
Burundi	28.9	30.1	-1.2	28.3	34.0	-5.7	31.7	33.9	-2.2	29.0	31.1	-2.1
Cabo Verde	25.0	32.4	-7.4	26.5	31.0	-4.5	25.9	29.9	-4.0	25.7	29.5	-3.8
Cameroon	18.2	22.1	-3.9	17.6	22.9	-5.3	17.1	22.8	-5.7	17.3	22.2	-4.9
Central African Rep.	15.6	12.4	3.2	11.0	14.2	-3.2	12.3	15.1	-2.8	10.8	13.1	-2.3
Chad	17.5	22.2	-4.7	16.5	22.9	-6.4	15.7	22.6	-7.0	15.6	23.0	-7.4
Comoros	23.9	24.5	-0.7	23.4	24.6	-1.2	22.6	24.8	-2.2	22.7	24.4	-1.7
Congo	41.2	46.0	-4.8	41.6	51.2	-9.6	42.3	44.1	-1.8	40.4	39.1	1.3
Congo, Dem. Rep.	13.7	13.3	0.5	14.8	15.3	-0.5	14.7	15.4	-0.7	15.2	14.2	1.0
Côte d'Ivoire	19.8	22.0	-2.3	20.8	24.3	-3.5	20.6	24.0	-3.4	20.9	24.7	-3.8
Djibouti	35.6	46.0	-10.5	37.0	43.8	-6.7	36.4	42.2	-5.8	35.4	41.2	-5.8
Egypt*	21.7	33.9	-12.2	21.3	32.8	-11.5	22.9	32.5	-9.6	22.5	31.1	-8.7
Equatorial Guinea	33.6	40.4	-6.8	29.7	36.6	-6.9	30.1	37.4	-7.3	29.3	38.3	-9.0
Eritrea*	14.7	29.3	-14.6	18.6	29.4	-10.7	18.7	28.9	-10.3	18.7	28.6	-9.9
Ethiopia*	15.1	17.7	-2.6	16.1	18.1	-2.0	14.5	15.7	-1.3	14.2	15.0	-0.8
Gabon	26.1	23.5	2.7	24.8	27.5	-2.7	24.2	28.8	-4.6	24.3	26.5	-2.3
Gambia	21.9	32.9	-11.0	23.1	32.7	-9.6	23.5	32.8	-9.3	23.3	29.3	-6.1
Ghana	21.8	28.2	-6.4	23.1	28.7	-5.7	23.4	28.4	-5.0	22.7	26.5	-3.9
Guinea	19.4	23.5	-4.1	18.1	25.6	-7.5	18.4	23.4	-5.0	18.0	22.7	-4.6
Guinea-Bissau	23.1	25.2	-2.1	22.9	25.1	-2.2	21.2	23.9	-2.7	20.9	24.0	-3.1
Kenya*	20.0	25.7	-5.7	22.5	31.3	-8.8	22.0	30.1	-8.2	20.7	27.0	-6.3
Lesotho**	60.4	62.9	-2.5	60.6	60.0	0.6	60.5	63.5	-3.1	62.0	67.5	-5.5
Liberia*	27.3	30.2	-2.9	27.0	37.0	-9.9	27.2	32.8	-5.6	25.0	30.8	-5.7
Libya	40.9	84.4	-43.5	41.8	100.7	-58.9	41.4	102.1	-60.7	40.7	97.5	-56.8
Madagascar	12.4	14.7	-2.3	12.3	16.9	-4.6	12.8	15.9	-3.1	13.4	17.0	-3.6
Malawi*	22.3	28.2	-5.9	21.2	26.9	-5.7	22.3	25.6	-3.3	22.4	25.4	-3.1
Mali	20.8	24.4	-3.5	20.8	24.5	-3.7	20.8	24.3	-3.5	21.0	24.7	-3.6
Mauritania	27.8	31.5	-3.7	28.8	31.7	-2.9	27.1	29.5	-2.4	26.2	28.3	-2.2



Table 4. Public finances, 2014-17 (percentage of GDP) (cont.)

	2014			2015 (e)			2016 (p)			2017 (p)		
	Total revenue and grants	Total expenditure and net lending	Overall balance	Total revenue and grants	Total expenditure and net lending	Overall balance	Total revenue and grants	Total expenditure and net lending	Overall balance	Total revenue and grants	Total expenditure and net lending	Overall balance
Mauritius	20.6	23.9	-3.2	21.4	25.7	-4.4	22.4	26.3	-3.9	22.5	26.3	-3.8
Morocco	28.0	33.0	-4.9	27.4	31.7	-4.3	27.3	30.8	-3.5	26.8	29.8	-3.0
Mozambique	33.3	40.0	-6.6	32.9	38.4	-5.4	33.5	37.3	-3.7	33.7	36.1	-2.4
Namibia**	32.8	37.1	-4.3	36.0	39.8	-3.8	37.3	40.5	-3.1	37.5	41.2	-3.7
Niger	22.9	28.4	-5.5	25.0	32.2	-7.1	24.3	31.1	-6.7	23.4	27.8	-4.4
Nigeria	14.6	13.7	1.0	13.2	15.6	-2.3	12.4	15.8	-3.4	12.4	15.6	-3.1
Rwanda*	26.0	30.0	-4.0	25.4	30.4	-5.0	24.5	29.4	-4.9	23.9	29.5	-5.6
Sao Tome and Principe	26.0	31.5	-5.5	24.3	30.4	-6.1	24.1	28.0	-3.9	24.5	28.5	-4.0
Senegal	25.5	30.6	-5.2	26.0	30.6	-4.6	26.4	30.5	-4.1	26.6	29.8	-3.2
Seychelles	34.9	32.7	2.2	34.4	32.5	1.9	34.0	32.5	1.4	32.8	31.8	1.0
Sierra Leone	14.2	17.3	-3.0	19.3	23.0	-3.7	17.7	23.7	-6.0	16.4	22.4	-6.0
Somalia	...	...	...	...	...	...	...	...	...	...	...	...
South Africa**	26.1	29.7	-3.6	28.4	32.3	-3.9	30.0	33.2	-3.3	30.7	33.8	-3.1
South Sudan*	...	...	-10.9	...	...	-21.3	...	...	-22.0	...	...	-18.1
Sudan	10.4	11.4	-1.0	10.0	11.5	-1.5	9.3	10.7	-1.4	9.1	10.2	-1.0
Swaziland**	27.0	26.3	0.7	34.1	35.5	-1.4	31.4	33.2	-1.8	32.0	34.1	-2.1
Tanzania*	15.7	19.1	-3.4	14.6	18.5	-3.9	14.4	18.8	-4.4	14.8	20.2	-5.4
Togo	24.9	28.3	-3.4	24.9	30.2	-5.3	25.1	29.9	-4.7	25.5	29.9	-4.4
Tunisia	25.2	29.6	-4.4	24.5	28.7	-4.2	24.3	28.2	-3.9	24.4	28.1	-3.7
Uganda*	13.0	17.1	-4.1	14.1	18.6	-4.5	13.9	19.9	-6.0	13.7	19.2	-5.5
Zambia	18.9	24.8	-5.9	18.5	26.7	-8.2	19.3	25.9	-6.6	20.1	26.3	-6.2
Zimbabwe	26.5	28.4	-1.9	26.7	28.3	-1.6	26.9	28.4	-1.5	27.1	28.3	-1.2
<b>AFRICA</b>	<b>25.3</b>	<b>30.1</b>	<b>-4.8</b>	<b>22.8</b>	<b>29.4</b>	<b>-6.6</b>	<b>23.0</b>	<b>30.5</b>	<b>-6.5</b>	<b>23.7</b>	<b>29.8</b>	<b>-5.9</b>

Note: \* Fiscal year July (n-1)/June (n) \*\* Fiscal year April (n-1)/March (n) [South African fiscal year is April (n)/ March (n+1)].

Sources: AfDB Statistics Department, various domestic authorities; IMF country reports and AfDB (e) estimates and (p) projections.

Table 5. Monetary indicators, 2014-17

	Inflation (%)			Exchange rate (LCU/USD)			Broad money (LCU billion) 2015			Reserves, excluding gold, (USD million) 2015		
	2014	2015 (e)	2016 (p)	2017 (p)	2013	2014	2015	Level	% of GDP	Growth 2014-15	Stock at year-end	Eq. months of imports
Algeria	2.9	4.8	4.3	4.0	79.4	80.6	100.7	13 457.2	77.1	-1.6	144 677.5	29.1
Angola	7.3	10.2	14.1	14.8	96.5	98.3	120.1	5 712.9	44.0	11.5	23 901.2	8.1
Benin	-1.1	0.4	2.3	2.4	494.0	494.4	591.4	2 754.9	51.5	17.1	731.6	2.2
Botswana	4.4	3.1	4.5	4.3	8.4	9.0	10.1	67.9	49.4	7.7	7 958.9	13.4
Burkina Faso	-0.3	0.8	2.0	1.9	494.0	494.4	591.4	2 477.2	36.9	14.5	259.6	0.9
Burundi	4.4	5.5	7.5	6.7	1 555.1	1 546.7	1 570.6	906.5	22.3	0.0	135.1	2.1
Cabo Verde	-0.2	0.0	1.6	2.7	83.1	83.1	99.4	154.6	90.7	4.7	428.4	4.6
Cameroon	1.9	2.7	2.2	2.1	494.0	494.4	591.4	4 091.6	23.9	8.6	3 353.2	4.7
Central African Republic	11.6	5.6	4.7	4.0	494.0	494.4	591.4	275.4	28.9	12.5	221.8	4.8
Chad	1.7	4.0	2.7	4.0	494.0	494.4	591.4	1 115.9	15.9	3.5	207.3	0.5
Comoros	2.9	2.1	2.2	2.6	370.5	370.8	443.6	100.0	40.9	2.9	136.6	6.0
Congo	3.0	0.9	1.5	1.0	494.0	494.4	591.4	2 659.7	50.1	1.4	2 259.9	2.8
Congo, Dem. Rep.	1.0	0.8	2.1	2.5	919.8	925.2	926.0	4 217.0	13.9	6.7	1 215.9	1.2
Côte d'Ivoire	0.4	1.5	1.8	1.9	494.0	494.4	591.4	3 070.8	16.3	17.4	4 715.7	5.0
Djibouti	3.0	3.1	3.3	3.4	177.7	177.7	177.7	257.5	81.4	9.7	364.9	4.4
Egypt*	10.8	11.2	8.8	10.2	6.9	7.1	7.7	1 765.4	73.6	16.4	13 282.0	2.5
Equatorial Guinea	4.3	3.6	2.6	2.3	494.0	494.4	591.4	1 320.1	14.4	-15.2	1457.2	1.9
Eritrea	12.3	12.5	12.0	11.7	15.4	15.4	15.4	82.7	128.1	12.9	...	...
Ethiopia*	8.1	7.7	7.4	8.9	18.6	19.7	20.7	369.7	28.3	24.2	...	...
Gabon	3.2	1.2	2.4	2.4	494.0	494.4	591.4	2 077.0	25.3	-5.2	2 083.6	5.0
Gambia	6.3	6.5	5.5	5.5	36.0	41.7	47.2	22.6	56.5	11.0	143.3	4.6
Ghana	17.0	17.2	10.2	7.9	2.0	2.6	3.8	45.1	43.4	22.5	...	...
Guinea	9.7	8.0	8.5	8.8	6 995.9	7 014.1	7 425.7	1 6974.0	31.2	15.7	233.5	1.0
Guinea-Bissau	1.9	1.5	2.1	1.8	494.0	494.4	591.4	272.4	43.1	11.3	332.1	11.5
Kenya	6.9	6.0	6.0	5.2	86.1	87.9	98.1	2 694.7	41.9	15.6	7 762.4	4.6
Lesotho	5.3	3.8	3.9	4.0	9.7	10.9	12.8	9.3	39.6	3.1	904.2	5.8
Liberia	9.9	7.7	7.0	7.5	1.0	1.0	1.0	0.7	25.4	0.4	...	...
Libya	2.4	8.6	9.7	5.8	1.3	1.3	1.4	81.0	173.2	3.5	74 863.0	38.3
Madagascar	6.0	7.9	7.4	7.8	2 206.9	2 414.8	2 934.4	6 662.0	23.3	1.7	832.0	2.9
Malawi	23.8	21.2	18.1	16.0	364.4	424.9	499.5	804.6	27.3	27.8	640.2	3.8
Mali	0.9	2.0	2.7	1.8	494.0	494.4	591.4	2 238.5	35.9	13.2	624.0	2.5

Table 5. Monetary indicators, 2014-17 (cont.)

	Inflation (%)			Exchange rate (LCU / USD)		Broad money (LCU billion)		Reserves, excluding gold, (USD million) 2015				
	2014	2015 (e)	2016 (p)	2017 (p)	2013	2014	2015	Level	% of GDP	Growth 2014-15	Stock at year-end	Eq. months of imports
Mauritania	3.5	1.5	6.7	6.1	302.1	303.3	318.6	530.4	26.5	4.0	...	...
Mauritius	3.2	1.3	2.8	2.5	30.7	30.6	35.1	418.4	91.6	5.2	3 957.0	5.7
Morocco	0.4	1.8	1.4	1.6	8.4	8.4	9.8	1 149.2	106.6	5.8	22 253.9	5.8
Mozambique	2.3	2.0	5.7	5.2	30.1	31.4	40.1	239.8	0.0	17.1	2 411.4	0.0
Namibia	5.3	3.5	3.9	5.5	9.7	10.9	12.8	81.8	59.1	9.8	1 208.7	2.1
Niger	-0.9	1.0	1.3	0.9	494.0	494.4	591.4	1 113.9	26.9	0.3	1 039.0	4.1
Nigeria	7.8	9.0	10.1	9.4	157.3	158.6	192.4	20 612.6	23.0	9.6	31 561.8	6.2
Rwanda	2.4	2.5	3.0	3.0	646.6	681.9	729.0	1 416.7	24.7	15.8	1 029.8	5.4
Sao Tome and Principe	6.7	5.3	4.6	4.7	18 450.0	18 466.4	2 2090.6	2 877.3	40.6	15.1	78.4	7.3
Senegal	-0.5	0.0	-0.4	1.2	494.0	494.4	591.4	3 752.3	48.0	7.7	2 011.8	3.9
Seychelles	1.4	4.4	2.6	2.7	12.1	12.7	13.3	11.6	51.8	5.7	541.5	5.0
Sierra Leone	7.1	9.9	10.0	10.1	4 332.5	4 524.2	4 905.3	5 446.7	26.4	10.5	556.5	2.6
Somalia	...	...	...	...	...	...	...	...	...	...	...	...
South Africa	6.1	4.6	6.8	7.0	9.7	10.9	12.8	2 866.2	72.8	6.3	41 619.5	5.0
South Sudan	1.7	41.1	14.7	25.0	3.0	3.0	3.0	9.1	21.8	16.6	229.9	0.8
Sudan	36.9	16.9	13.1	11.2	4.8	5.7	6.0	91.7	15.0	18.0	181.5	0.2
Swaziland	5.7	5.6	6.0	6.7	9.7	10.9	12.8	12.5	27.8	7.4	553.6	3.1
Tanzania	6.1	5.6	5.9	6.0	1 600.4	1 654.0	1 979.7	21 626.3	23.1	16.2	4 071.9	4.1
Togo	0.2	1.9	2.1	2.2	494.0	494.4	591.4	1 212.3	51.3	10.5	574.0	3.1
Tunisia	5.5	5.0	4.0	3.5	1.6	1.7	2.0	62.9	77.6	6.9	7 205.5	4.3
Uganda	4.3	4.5	5.2	5.3	2 586.9	2 599.8	3 241.4	17 323.9	22.5	13.3	2 829.8	4.6
Zambia	7.8	10.1	10.8	8.9	5.4	6.2	8.6	39.7	18.7	13.4	2 967.6	3.5
Zimbabwe	-0.2	-2.0	-1.3	-0.7	...	...	...	4.6	36.7	5.1	328.0	0.6
<b>AFRICA</b>	<b>7.2</b>	<b>7.3</b>	<b>7.2</b>	<b>7.2</b>	...	...	...	...	...	...	...	...

Note: \* For Egypt and Ethiopia, fiscal year July (n-1)/June (n).

Sources: AfDB Statistics Department, various domestic authorities; International Financial Statistics and AfDB (e) estimates and (p) projections.

Table 6. Balance of payments indicators, 2014-17

	Trade balance (USD million)			Current account balance (USD million)			Current account balance (as % of GDP)					
	2014	2015 (e)	2016 (p)	2017 (p)	2014	2015 (e)	2016 (p)	2017 (p)	2014	2015 (e)	2016 (p)	2017 (p)
Algeria	326	-16 157	-20 588	-18 677	-9 465	-26 957	-29 288	-27 077	-4.4	-15.6	-17.1	-15.2
Angola	30 583	16 531	19 601	20 065	-3 722	-7 824	-6 165	-6 539	-2.5	-7.2	-5.4	-5.4
Benin	-589	-426	-475	-535	-690	-639	-695	-730	-7.2	-7.1	-7.1	-7.0
Botswana	541	773	58	141	2 496	2 165	757	678	15.7	16.0	5.6	5.2
Burkina Faso	-242	-32	-107	-111	-767	-515	-630	-845	-6.1	-4.5	-5.3	-6.9
Burundi	-600	-399	-391	-440	-275	-116	-173	-215	-9.5	-4.5	-6.0	-6.6
Cabo Verde	-610	-501	-462	-455	-139	-154	-175	-193	-8.0	-9.0	-9.8	-10.4
Cameroon	-3 913	-3 494	-3 772	-4 039	-4 857	-4 046	-4 430	-4 811	-15.2	-14.0	-14.6	-15.0
Central African Republic	-325	-251	-185	-176	-105	-185	-89	-76	-6.1	-11.5	-5.1	-4.0
Chad	393	-3	237	112	-1 240	-1 177	-1 072	-1 068	-8.9	-9.9	-8.6	-8.5
Comoros	-189	-137	-150	-171	-42	-41	-40	-48	-6.1	-7.4	-6.9	-7.9
Congo	4 488	1 741	2 504	3 084	-359	-1 302	-1 157	-998	-2.6	-14.5	-12.4	-9.6
Congo, Dem. Rep.	116	559	658	-857	-3 291	-2 866	-3 959	-5 987	-9.2	-8.7	-10.8	-13.9
Côte d'Ivoire	3 671	3 908	3 671	2 791	-766	-791	-1 043	-1 484	-2.3	-2.5	-3.0	-3.9
Djibouti	-674	-645	-681	-764	-407	-285	-278	-283	-25.6	-16.0	-14.0	-12.8
Egypt*	-34 063	-34 950	-36 556	-39 188	-2 716	-11 467	-3 878	-5 547	-0.9	-3.7	-1.1	-1.4
Equatorial Guinea	9 286	8 038	8 392	8 212	-1 549	-1 097	-364	-282	-10.0	-7.1	-2.3	-1.8
Eritrea	-235	-374	-465	-455	-93	-143	-207	-249	-2.4	-3.4	-4.1	-4.5
Ethiopia*	-10 243	-11 106	-12 633	-14 690	-5 876	-9 214	-6 184	-7 680	-10.9	-14.6	-8.4	-9.3
Gabon	6 313	3 103	2 391	3 538	1 510	-841	-1 284	-614	8.3	-6.1	-9.6	-4.1
Gambia	-235	-208	-224	-252	-146	-169	-146	-112	-17.7	-20.0	-15.0	-10.2
Ghana	-1 897	-1 403	-2 277	-2 331	-4 208	-2 254	-2 415	-2 210	-9.5	-8.2	-7.7	-6.0
Guinea	-1 209	-1 275	-1 283	-1 321	-1 889	-1 730	-2 265	-2 215	-26.1	-23.6	-28.4	-25.6
Guinea-Bissau	-56	7	-30	-31	-13	16	-27	-30	-1.3	1.5	-2.4	-2.6
Kenya	-5 880	-10 647	-10 390	-11 824	-6 097	-5 158	-4 501	-5 009	-10.0	-7.9	-6.3	-6.9
Lesotho	-1 055	-792	-654	-667	-231	-154	-104	-240	-10.6	-8.4	-6.5	-15.7
Liberia	-607	-1 052	-980	-836	-495	-1 014	-917	-819	-24.1	-36.9	-32.0	-29.5
Libya	-6 118	-12 121	-11 089	-9 051	-12 387	-17 247	-15 697	-13 160	-30.1	-51.0	-44.5	-33.3
Madagascar	-457	-293	-429	-488	-21	-226	-167	-203	-0.2	-2.3	-1.7	-2.0
Malawi	-586	-339	-234	-219	-495	-356	-349	-373	-8.2	-6.0	-6.1	-6.7
Mali	-441	-66	-309	-374	-670	-380	-451	-600	-5.7	-3.6	-4.1	-5.2
Mauritania	-711	-946	-995	-1 033	-1 471	-1 394	-1 404	-1 475	-30.0	-22.2	-20.3	-19.3
Mauritius	-2 220	-2 046	-2 030	-1 961	-740	-644	-624	-552	-5.9	-4.9	-4.7	-4.0

Table 6. Balance of payments indicators, 2014–17 (cont.)

	Trade balance (USD million)			Current account balance (USD million)			Current account balance (as % of GDP)					
	2014	2015 (e)	2016 (p)	2017 (p)	2014	2015 (e)	2016 (p)	2017 (p)	2014	2015 (e)	2016 (p)	2017 (p)
Morocco	-20 611	-16 239	-15 053	-18 094	-6 226	-2 992	-770	-1 104	-5.7	-2.7	-0.7	-0.9
Mozambique	-5 051	-5 455	-4 628	-3 865	-7 055	-7 732	-7 021	-6 514	-41.6	-44.0	-46.1	-47.9
Namibia	-2 736	-1 788	-1 576	-1 297	-1 355	-875	-1 101	-1 019	-10.4	-8.1	-11.3	-11.1
Niger	-874	-987	-1 021	-743	-1 724	-1 481	-1 624	-1 357	-20.9	-21.2	-21.9	-17.5
Nigeria	20 992	-1 576	-3 878	5 146	1 279	-16 127	-14 642	-10 666	0.2	-3.5	-3.2	-2.0
Rwanda	-1 422	-1 269	-1 311	-1 499	-929	-968	-978	-977	-11.8	-12.3	-11.9	-11.4
Sao Tome and Principe	-63	-57	-53	-47	-81	-45	-48	-50	-24.2	-14.0	-13.8	-13.5
Senegal	-5 781	-4 172	-4 158	-4 247	-1 376	-1 070	-843	-629	-9.0	-8.1	-6.0	-4.2
Seychelles	-523	-456	-533	-569	-297	-238	-289	-323	-21.3	-14.2	-15.4	-15.9
Sierra Leone	-340	-155	-184	-336	-813	-475	-385	-436	-16.4	-11.3	-8.4	-8.1
Somalia	...	...	...	...	...	...	...	...	...	...	...	...
South Africa	-6 325	-1 450	309	-759	-19 041	-13 361	-11 476	-10 330	-5.4	-4.3	-4.1	-4.0
South Sudan	1 044	-940	-1 023	-1 093	572	-322	124	392	4.0	-2.5	0.9	2.8
Sudan	-5 230	-5 923	-4 878	-5 150	-7 434	-6 684	-6 989	-7 235	-9.0	-6.5	-6.4	-6.2
Swaziland	213	123	182	224	128	33	54	48	2.9	0.9	1.6	1.5
Tanzania	-3 385	-1 663	-1 210	-1 847	-4 947	-4 453	-4 206	-3 872	-10.3	-9.4	-8.2	-7.0
Togo	-902	-693	-724	-759	-591	-474	-474	-488	-13.2	-11.9	-11.0	-10.5
Tunisia	-6 670	-3 228	-2 409	-2 947	-4 302	-3 136	-2 497	-2 453	-9.0	-7.6	-5.9	-5.8
Uganda	-2 360	-1 968	-2 032	-2 236	-2 625	-2 165	-2 301	-2 510	-9.6	-9.1	-9.1	-9.1
Zambia	1 625	-122	345	606	604	-732	-250	279	2.2	-3.0	-1.1	1.3
Zimbabwe	-3 437	-2 967	-2 888	-2 865	-3 288	-2 683	-2 507	-2 408	-23.2	-21.4	-19.8	-18.7
<b>AFRICA</b>	<b>-59 274</b>	<b>-115 991</b>	<b>-116 602</b>	<b>-115 346</b>	<b>-120 714</b>	<b>-164 180</b>	<b>-147 676</b>	<b>-142 734</b>	<b>-4.8</b>	<b>-7.3</b>	<b>-6.4</b>	<b>-5.8</b>

Note: \* For Egypt and Ethiopia, fiscal year July (n-1)/June (n). (e) Estimates; (p) projections.

Sources: AfDB Statistics Department; IMF WEO October 2015.



**Table 7. Exports, 2014**  
Three main exports, with their share in total exports\*

	<b>Product I</b>	<b>Product II</b>	<b>Product III</b>	<b>No. of products accounting for more than 75% of exports</b>
Algeria	Petroleum oils and oils obtained from bituminous minerals, crude (40.0%)	Natural gas, in gaseous state (15.3%)	Light oils and preparations (12.1%)	4
Angola	Petroleum oils and oils obtained from bituminous minerals, crude (96.0%)			1
Benin	Petroleum oils, other than crude (40.1%)	Light oils and preparations (13.6%)	Cotton, not carded/combed (9.6%)	5
Botswana	Diamonds, non-industrial, unworked simply sawn/cleaved/bruted (72.9%)	Diamonds, non-industrial, other than unworked simply sawn/cleaved/bruted (8.0%)	Nickel mattes (6.4%)	2
Burkina Faso	Gold (incl. gold plated with platinum), in unwrought forms (excl. powder) (65.2%)	Cotton, not carded/combed (19.8%)		2
Burundi	Coffee, not roasted, not decaffeinated (46.1%)	Tea, black (fermented) and partly fermented tea, whether or not flavoured (17.3%)	Miobium/kantalum/vanadium ores and concentrates (6.9%)	5
Cabo Verde	Petroleum oils and oils obtained from bituminous minerals, crude (50.1%)	Cocoa beans, whole/broken, raw/roasted (11.4%)	Wood sawn/chipped length wise, sliced/peeled, whether or not planed, sanded or end-jointed (6.7%)	5
Cameroon	Skipjack/stripe-bellied bonito (Euthynnus [Katsuwonus] pelamis), frozen (23.0%)	Mackerele, prepared/preserved, whole/in pieces (excl. minced) (14.6%)	Fish whole/in pieces (13.8%)	7
Central African Republic	Tropical wood, excluding Dark Red Meranti, Light Red Meranti and Meranti Bakau, in the rough (44.0%)	Cotton, not carded/combed (20.6%)	Wood sawn/chipped length wise, sliced/peeled, whether or not planed, sanded or end-jointed (16.8%)	3
Chad	Petroleum oils and oils obtained from bituminous minerals, crude (95.2%)			1
Comoros	Cloves (whole fruit, cloves and stems) (53.4%)	Vanilla (14.5%)	Vessels and other floating structures for breaking up (12.6%)	3
Congo	Petroleum oils and oils obtained from bituminous minerals, crude (78.9%)	Cathodes and sections of cathodes, of refined copper, unwrought (9.9%)		1
Congo, Dem. Rep.	Cathodes and sections of cathodes, of refined copper, unwrought (37.6%)	Copper ores and concentrates (22.1%)	Petroleum oils and oils obtained from bituminous minerals, crude (16.8%)	3
Côte d'Ivoire	Cocoa beans, whole/broken, raw/roasted (33.9%)	Cocoa paste, not defatted (7.6%)	Cocoa butter, fat and oil (5.6%)	10
Djibouti	Wood charcoal (incl. shell/nut charcoal) (16.2%)	Coffee, not roasted, not decaffeinated (14.7%)	Sesame seeds, whether or not broken (6.5%)	16
Egypt	Petroleum oils and oils obtained from bituminous minerals, crude (28.4%)			80
Equatorial Guinea	Petroleum oils and oils obtained from bituminous minerals, crude (68.2%)	Natural gas, liquefied (23.5%)		2
Eritrea	Copper ores and concentrates (93.7%)			1
Ethiopia	Sesame seeds, whether or not broken (24.7%)	Coffee, not roasted, not decaffeinated (24.2%)	Cut flowers and flower buds of a kind suitable for bouquets/ornamental purposes, fresh (9.8%)	6
Gabon	Petroleum oils and oils obtained from bituminous minerals, crude (81.3%)	Manganese ores and concentrates, incl. ferruginous manganese ores and concentrates with a manganese content of 20% or more (8.5%)		1
Gambia	Cashew nuts, in shell (36.6%)	Wood, in the rough, whether or not stripped (27.6%)	Ground-nut oil, crude (5.0%)	5

**Table 7. Exports, 2014 (cont.)**  
Three main exports, with their share in total exports\*

	Product I	Product II	Product III	No. of products accounting for more than 75% of exports
Ghana	Petroleum oils and oils obtained from bituminous minerals, crude (32.5%)	Cocoa beans, whole/broken, raw/roasted (19.8%)	Gold (incl. gold plated with platinum), in unwrought forms (excl. powder) (19.7%)	5
Guinea	Petroleum oils and oils obtained from bituminous minerals, crude (40.4%)	Aluminium ores and concentrates (35.6%)	Gold (incl. gold plated with platinum), in unwrought forms (excl. powder) (10.8%)	2
Guinea-Bissau	Cashew nuts, in shell (75.0%)	Wood, in the rough (excl. treated, coniferous, tropical, beech and oak) (19.8%)		1
Kenya	Tea, black (fermented) and partly fermented tea, whether or not flavoured (15.9%)	Cut flowers and flower buds (11.5%)	Petroleum oils and oils obtained from bituminous minerals, (excl. crude) (8.1%)	52
Lesotho	Diamonds, non-industrial, unworked/simply sawn/cleaved/bruted (40.2%)	Men's/boys' trousers, bib and brace overalls, breeches and shorts (excl. swimwear) (11.1%)	Women's/girls' trousers, bib and brace overalls, breeches and shorts (excl. Swimwear) (6.0%)	9
Liberia	Iron ores and concentrates (excl. roasted iron pyrites), non-agglomerate (40.7%)	Vessels and other floating structures (13.9%)	Technically specified natural rubber (TSNR) (12.9%)	4
Libya	Petroleum oils and oils obtained from bituminous minerals, crude (76.5%)	Natural gas, in gaseous state (13.4%)		1
Madagascar	Nickel, not alloyed, unwrought (24.0%)	Vanilla (9.1%)	Cloves (whole fruit, cloves and stems) (4.7%)	25
Malawi	Tobacco, partly/wholly stemmed/stripped (59.7%)	Tea, black (fermented), and partly fermented tea, whether or not flavoured (8.0%)	Cane sugar, raw, in solid form (6.2%)	4
Mali	Cotton, not carded/combed (43.0%)	Gold (incl. gold plated with platinum), in unwrought forms (excl. powder) (34.2%)	Sesame seeds, whether or not broken (6.2%)	2
Mauritania	Iron ores and concentrates (excl. roasted iron pyrites), non-agglomerate (42.4%)	Gold (incl. gold plated with platinum), in unwrought forms (excl. powder) (11.4%)	Octopus, other than live/fresh/chilled (7.3%)	6
Mauritius	Tunas, skipjack and bonito (13.8%)	Cane/beet sugar and chemically pure sucrose (9.3%)	Men's/boys' shirts (excl. knitted or crocheted), of cotton (6.8%)	40
Morocco	Ignition wiring sets and other wiring sets of a kind used in vehicles, aircraft or ships (8.8%)	Phosphoric acid and polyphosphoric acids, whether or not chemically defined (6.0%)		66
Mozambique	Aluminium, not alloyed, unwrought (20.7%)	Precious stones (excl. diamonds, rubies, sapphires and emeralds) and semi-precious stones, unworked/simply sawn/roughly shaped but not strung/mounted/set (16.8%)	Light oils and preparations (8.8%)	9
Namibia	Diamonds, non-industrial, unworked/simply sawn/cleaved/bruted (28.0%)	Zinc, not alloyed, unwrought (13.7%)	Fish filets, frozen (6.8%)	13
Niger	Light oils and preparations (32.3%)	Petroleum oils and oils obtained from bituminous minerals (excl. crude) (19.7%)	Sesame seeds, whether or not broken (16.2%)	4
Nigeria	Petroleum oils and oils obtained from bituminous minerals, crude (81.4%)	Natural gas, liquefied (12.3%)		1
Rwanda	Niobium/tantalum/vanadium ores and concentrates (27.0%)	Tin ores and concentrates (19.8%)	Coffee, not roasted, not decaffeinated (15.5%)	5
Sao Tome and Principe	Cocoa beans, whole/broken, raw/roasted (61.2%)	Vessels and other floating structures for breaking up (13.3%)	Chemicals products and preparations of the chemical/allied industries (5.6%)	3



**Table 7. Exports, 2014 (cont.)**  
Three main exports, with their share in total exports\*

	<b>Product I</b>	<b>Product II</b>	<b>Product III</b>	<b>No. of products accounting for more than 75% of exports</b>
Senegal	Gold (incl. gold plated with platinum), in unwrought forms (excl. powder) (16.8%)	Fish frozen (excl. fillets/oth. fish meat /livers and roes) (10.3%)	Phosphoric acid and polyphosphoric acids, whether or not chemically defined (7.3%)	27
Seychelles	Tunas, skipjack and bonito (56.3%)	Yellowfin tunas (8.7%)	Bigeye tunas (7.9%)	4
Sierra Leone	Iron ores and concentrates (excl. roasted iron pyrites), non-agglomerate (76.8%)	Diamonds, non-industrial, unwkd./simply sawn/cleaved/bruted (8.1%)		1
Somalia	Sesame seeds, whether or not broken (29.0%)	Live goats (24.2%)	Live bovine animals other than pure-bred breeding animals (22.8%)	3
South Africa	Gold (incl. gold plated with platinum), in unwrought forms (excl. powder) (8.9%)	Iron ores and concentrates (excl. roasted iron pyrites), non-agglom. (6.1%)	Platinum, unwrought/in powder form (5.5%)	75
South Sudan	Petroleum oils and oils obtained from bituminous minerals, crude (99.8%)			1
Sudan	Petroleum oils and oils obtained from bituminous minerals, crude (66.1%)	Sesame seeds, whether or not broken (7.7%)		3
Swaziland	Mixtures of odoriferous substances and mixtures (incl. alcoholic solutions) (24.3%)	Cane sugar, raw, in solid form, not containing added flavouring/colouring matter (15.1%)	Other chem. prods. and preps. of the chem./allied industries (incl. those consisting of mixts. of nat. prods.) (10.8%)	21
Tanzania	Gold (incl. gold plated with platinum), in unwrought forms (excl. powder) (15.5%)	Tobacco, partly/wholly stemmed/stripped (10.3%)	Sesame seeds, whether or not broken (6.5%)	22
Togo	Gold (incl. gold plated with platinum), in unwrought forms (excl. powder) (24.6%)	Petroleum oils and oils obtained from bituminous minerals (excl. crude) (18.2%)	Electrical energy (6.2%)	11
Tunisia	Petroleum oils and oils obtained from bituminous minerals, crude (9.0%)	Ignition wiring sets and other wiring sets of a kind used in vehicles, aircraft or ships (7.8%)	Men's/boys' trousers, bib and brace overalls, breeches and shorts (excl. Swimwear) (5.2%)	88
Uganda	Coffee, not roasted, not decaffeinated (30.1%)	Sesame seeds, whether or not broken (6.3%)	Portland cement (excl. white cement, whether or not artificially coloured) (5.5%)	16
Zambia	Cathodes and sections of cathodes, of refined copper, unwrought (59.7%)	Tobacco, partly/wholly stemmed/stripped (5.8%)		7
Zimbabwe	Tobacco, partly/wholly stemmed/stripped (39.9%)	Ferro-chromium, containing by weight more than 4% of carbon, in granular/powder form (10.9%)	Cane sugar, raw, in solid form, not containing added flavouring/colouring matter (6.9%)	10
<b>AFRICA</b>	<b>Petroleum oils and oils obtained from bituminous minerals, crude (38.2%) [12.3%]</b>	<b>Natural gas, liquefied (3.7%) [12.0%]</b>	<b>Natural gas, in gaseous state (3.1%) [8.4%]</b>	<b>36</b>

Notes: \*Products are reported when accounting for more than 4% of total exports.

\*\* Figures in [ ] represent the share of Africa in the world export for each product.

Sources: AfDB Statistics Department; COMTRADE WITS Online Database - UN Statistics Division.

Table 8. Diversification and competitiveness, 2010-14

	Diversification index					Annual export growth (%)	Competitiveness indicator 2010-14 (%)	
	2010	2011	2012	2013	2014		Sectoral effect	Global competitiveness effect
Algeria	4.0	3.6	3.6	3.8	4.5	0.0	1.8	-5.8
Angola	1.1	1.1	1.1	1.1	1.1	5.0	0.6	0.4
Benin	6.1	7.4	8.0	7.8	4.8	15.8	5.0	6.8
Botswana	4.7	1.8	2.0	1.7	1.8	29.4	-1.7	37.3
Burkina Faso	4.0	2.9	1.8	1.9	2.1	60.1	-1.1	57.3
Burundi	2.2	2.1	2.7	3.7	4.0	-1.7	-2.0	-3.7
Cabo Verde	9.8	8.4	9.9	5.1	8.5	13.5	-1.1	10.5
Cameroon	4.9	5.3	4.3	4.7	3.6	5.9	-0.2	2.2
Central African Republic	6.3	4.8	5.0	5.4	3.7	-11.6	-2.7	-12.8
Chad	1.5	1.1	1.4	1.1	1.1	-0.2	0.5	-4.6
Comoros	4.3	2.3	2.7	3.3	3.0	10.7	10.4	-3.8
Congo	1.3	1.4	1.3	1.4	1.6	-1.5	0.6	-6.0
Congo, Dem. Rep.	5.2	5.1	3.8	4.2	4.3	7.8	-5.0	8.8
Côte d'Ivoire	7.7	6.4	8.2	8.3	7.2	5.0	-1.7	2.7
Djibouti	3.6	4.7	7.9	11.2	14.9	-14.6	-6.1	-12.5
Egypt	23.5	14.3	13.5	14.3	11.7	-1.7	0.9	-6.6
Equatorial Guinea	1.7	1.8	1.7	2.1	1.9	8.8	1.9	2.9
Eritrea	21.3	1.1	1.2	2.5	1.1	924.4	-4.3	924.8
Ethiopia	4.3	4.2	5.8	7.1	7.0	15.8	3.1	8.7
Gabon	1.8	1.8	1.6	1.8	1.5	4.0	-0.1	0.2
Gambia	11.4	7.8	3.7	3.4	4.6	16.7	3.4	9.3
Ghana	4.1	5.7	5.5	6.2	5.4	43.3	-2.3	41.6
Guinea	5.1	4.5	4.2	3.8	3.3	3.1	2.1	-3.0
Guinea-Bissau	3.1	2.0	1.5	2.2	1.7	11.3	5.9	1.4
Kenya	15.4	16.6	17.6	17.2	19.3	10.6	-1.0	7.7
Lesotho	9.7	6.3	7.4	7.8	5.4	6.3	3.6	-0.4
Liberia	8.2	8.2	9.0	5.7	4.6	0.6	-8.8	5.4
Libya	1.5	1.4	1.3	1.5	1.6	-14.7	0.8	-19.6
Madagascar	32.7	12.6	22.1	18.8	12.9	29.4	5.1	20.3
Malawi	3.0	4.3	3.4	3.2	2.7	0.1	-2.9	-1.0

Table 8. Diversification and competitiveness, 2010-14 (cont.)

	Diversification index					Annual export growth (%)	Competitiveness indicator 2010-14 (%)	
	2010	2011	2012	2013	2014		Sectoral effect	Global competitiveness effect
Mali	3.7	3.4	2.7	3.7	3.3	32.3	-2.4	30.8
Mauritania	3.6	3.6	4.5	4.0	4.7	6.6	-1.8	4.4
Mauritius	24.3	22.4	19.6	19.0	22.0	6.4	-0.3	2.7
Morocco	48.0	39.8	44.3	46.4	47.3	9.4	-1.1	6.5
Mozambique	3.9	6.0	8.6	9.3	10.4	19.3	-0.5	15.9
Namibia	14.6	12.0	8.9	15.1	8.9	8.6	-1.4	7.9
Niger	8.4	1.9	6.1	1.8	5.6	44.2	-0.5	40.8
Nigeria	1.4	1.4	1.4	1.4	1.5	3.8	1.4	-1.6
Rwanda	5.3	5.2	6.0	4.1	6.3	26.2	1.2	21.0
Sao Tome and Principe	5.4	5.1	4.1	2.0	2.5	-2.4	-1.7	-4.7
Senegal	10.5	12.7	13.4	17.8	18.9	0.0	-0.5	-3.5
Seychelles	3.8	2.7	3.3	2.9	3.0	9.8	3.3	2.6
Sierra Leone	8.5	9.5	4.0	1.9	1.7	127.1	0.4	122.7
Somalia	4.7	5.3	4.7	4.6	4.8	-1.0	-7.3	2.3
South Africa	42.5	37.7	34.9	33.3	40.1	1.9	0.8	-2.9
South Sudan	...	...	...	1.0	1.0	...	...	...
Sudan	1.2	1.2	2.2	2.4	2.2	-16.9	0.7	-21.6
Swaziland	15.8	14.1	11.3	9.3	10.0	4.3	-2.5	2.8
Tanzania	21.1	16.3	11.0	18.9	18.5	17.1	5.5	7.5
Togo	10.8	10.6	6.9	6.6	9.2	19.9	-0.2	16.1
Tunisia	39.0	41.2	38.9	37.9	44.4	-0.6	-0.9	-3.7
Uganda	9.4	6.7	9.1	10.6	9.1	4.7	-0.7	1.4
Zambia	2.1	2.1	2.5	2.4	2.7	0.0	-4.1	0.2
Zimbabwe	11.2	9.6	8.5	6.8	5.5	15.8	-3.3	15.1
<b>AFRICA</b>	<b>5.2</b>	<b>5.7</b>	<b>5.1</b>	<b>5.7</b>	<b>6.5</b>	<b>2.9</b>	<b>0.7</b>	<b>-1.7</b>

Sources: AfDB Statistics Department; COMTRADE Database (Harmonized System 2002) - UN Statistics Division.



Table 9. International prices of exports, 2008-15

	Unit	2008	2009	2010	2011	2012	2013	2014	2015
Aluminum	(\$/mt)	2 572.79	1 664.83	2 173.12	2 401.39	2 023.28	1 846.67	1 867.42	1 664.68
Banana (US)	(\$/mt)	844.21	847.14	868.32	967.99	983.98	924.07	927.79	957.06
Coal (Australia)	(\$/mt)	127.10	71.84	98.97	121.45	96.36	84.56	70.13	57.51
Cocoa	(cents/kg)	257.71	288.88	313.30	298.01	239.19	243.88	306.22	313.50
Coffee (Arabica)	(cents/kg)	308.16	317.11	432.01	597.61	411.10	307.60	442.38	352.61
Coffee (Robusta)	(cents/kg)	232.09	164.42	173.59	240.76	226.68	207.59	221.64	194.11
Copper	(\$/mt)	6 955.88	5 149.74	7 534.78	8 828.19	7 962.35	7 332.10	6 863.40	5 510.46
Cotton	(cents/kg)	157.39	138.20	228.34	332.85	196.71	199.27	183.20	155.74
Fish meal	(\$/mt)	1 133.08	1 230.25	1 687.42	1 537.42	1 558.33	1 747.17	1 708.85	1 557.75
Gold	(\$/toz)	871.71	972.97	1 224.66	1 569.21	1 669.52	1 411.46	1 265.58	1 160.66
Groundnut oil	(\$/mt)	2 131.12	1 183.67	1 403.96	1 988.17	2 435.67	1 773.04	1 313.00	1 336.92
Iron ore	(cents/dmt)	140.60	100.95	145.86	167.75	128.50	135.36	96.94	55.83
Lead	(cents/kg)	209.07	171.93	214.84	240.08	206.46	213.98	209.55	178.78
Logs (Cameroon)	(\$/m <sup>3</sup> )	526.89	421.47	428.56	484.81	451.39	463.53	465.17	388.58
Maize	(\$/mt)	223.12	165.51	185.91	291.68	298.42	259.39	192.88	169.75
Oil (crude)	(\$/bbl)	97.64	61.86	79.04	104.01	105.01	104.08	96.24	50.75
Palm oil	(\$/mt)	948.54	682.83	900.83	1 125.42	999.33	856.90	821.44	622.67
Phosphate (rock)	(\$/mt)	345.59	121.66	123.02	184.90	185.89	148.11	110.22	117.46
Rubber (US)	(cents/kg)	284.08	214.64	386.62	482.32	337.73	279.45	195.66	155.94
Sugar (EU)	(cents/kg)	69.69	52.44	44.18	45.46	42.01	43.38	43.40	36.26
Sugar (World)	(cents/kg)	28.21	40.00	46.93	57.32	47.49	39.00	37.50	29.63
Sugar (US)	(cents/kg)	46.86	54.88	79.25	83.92	63.56	45.05	53.11	54.63
Tea (Avg. 3 auctions)	(cents/kg)	242.05	272.40	288.49	292.05	289.78	286.20	272.05	270.73
Tea (Mombasa)	(cents/kg)	221.76	251.96	256.00	271.90	288.05	239.88	204.51	274.16
Tobacco, US import	(\$/mt)	3 588.74	4 241.18	4 304.78	4 485.05	4 302.35	4 588.82	4 990.77	4 908.30

Notes: \$ = US dollar; bbl = barrel; cents = US cents; dmt = dry metric ton; kg = kilogram; m<sup>3</sup> = cubic meter; mt = metric ton; toz = troy oz.  
Sources: World Bank, Global Commodity Price Prospects, March 2016.

Table 10. Foreign direct investment, 2009-14 (USD million)

	FDI inflows					FDI outflows					FDI inflows/GFCF (%)			Inward FDI* potential index		
	2009	2010	2011	2012	2013	2014	2009	2010	2011	2012	2013	2014	2012		2013	2014
Algeria	2 746	2 300	2 580	3 052	2 661	1 488	214	220	534	193	117	-4	5	4	2	62
Angola	2 205	-3 227	-3 024	-6 898	-7 120	-3 881	7	1 340	2 093	2 741	6 044	2 131	-40	-39	-20	100
Benin	134	177	161	230	360	377	31	-18	60	19	59	31	18	18	21	142
Botswana	129	218	1 371	487	398	393	6	-1	10	-8	-85	-43	9	8	8	107
Burkina Faso	101	35	144	329	490	342	8	-4	102	73	58	59	14	20	14	151
Burundi	0	1	3	1	7	32	0	0	0	0	0	0	0	1	5	172
Cabo Verde	174	159	155	70	70	78	1	0	1	-3	-5	-5	10	10	10	153
Cameroon	740	538	652	526	326	501	-69	503	187	-284	-379	-159	10	5	8	116
Central African Republic	42	62	37	70	2	3	0	0	0	0	0	0	22	1	2	177
Chad	375	313	282	343	538	761	0	0	0	0	0	0	9	15	14	158
Comoros	14	8	23	10	9	14	0	0	0	0	0	0	10	7	9	175
Congo	1 274	928	2 180	2 152	2 914	5 502	-5	4	53	-31	0	7	61	70	108	128
Congo, Dem. Rep.	864	2 939	1 687	3 312	2 098	2 063	35	7	91	421	401	344	59	33	29	106
Côte d'Ivoire	377	339	302	330	407	462	-9	25	15	14	-6	9	9	7	7	141
Djibouti	75	37	79	110	286	153	...	...	...	...	...	...	30	69	24	161
Egypt	6 712	6 386	-483	6 031	4 192	4 783	571	1 176	626	211	301	253	15	11	12	46
Equatorial Guinea	1 636	2 734	1 975	2 015	1 914	1 933	0	0	0	0	0	0	22	21	23	119
Eritrea	91	91	39	41	44	47	...	...	...	...	...	...	14	15	15	168
Ethiopia	221	288	627	279	953	1 200	...	...	...	...	...	...	2	6	8	112
Gabon	573	499	696	832	968	973	87	81	88	85	85	86	15	17	19	87
Gambia	1	20	66	93	38	28	...	...	...	...	...	...	45	25	14	165
Ghana	2 897	2 527	3 237	3 293	3 226	3 357	7	0	25	1	9	12	25	30	40	73
Guinea	141	101	956	606	135	566	0	0	1	2	0	1	44	10	65	139
Guinea-Bissau	17	33	25	7	20	21	0	6	1	0	0	0	15	44	45	171
Kenya	115	178	335	259	505	989	46	2	9	16	6	0	3	5	8	98
Lesotho	92	30	61	57	50	46	2	-21	-41	-38	-34	-31	7	7	5	173
Liberia	218	450	785	985	1 061	302	364	369	372	1 354	698	0	...	...	...	170
Libya	3 310	1 909	0	1 425	702	50	1 165	2 722	131	2 509	180	940	11	5	0	...
Madagascar	1 066	808	810	812	567	351	0	0	0	0	0	0	47	30	20	154
Malawi	49	97	129	129	120	130	-1	42	50	50	-46	-50	21	21	17	135

Table 10. Foreign direct investment, 2009-14 (USD million) (cont.)

	FDI inflows					FDI outflows					FDI inflows/GFCF (%)			Inward FDI* potential index		
	2009	2010	2011	2012	2013	2014	2009	2010	2011	2012	2013	2014	2012		2013	2014
Mali	748	406	556	398	308	199	-1	7	4	16	3	8	23	15	6	157
Mauritania	-3	131	589	1 389	1 126	492	4	4	4	4	4	4	93	74	31	147
Mauritius	248	430	433	589	259	418	37	129	158	180	135	91	22	10	15	110
Morocco	1 952	1 574	2 568	2 728	3 298	3 582	470	589	179	406	332	444	9	11	10	69
Mozambique	898	1 018	3 559	5 629	6 175	4 902	3	2	3	3	0	0	82	81	59	103
Namibia	506	793	816	1 133	801	414	-3	4	5	-11	-13	-34	40	26	13	125
Niger	791	940	1 066	841	719	769	59	-60	9	2	101	21	34	29	20	155
Nigeria	8 650	6 099	8 915	7 127	5 608	4 694	1 542	923	824	1 543	1 238	1 614	10	7	5	53
Rwanda	119	251	119	255	258	268	0	0	0	0	14	0	15	14	14	144
Sao Tome and Principe	16	51	32	23	11	20	0	0	0	0	0	0	18	10	14	163
Senegal	320	266	338	276	311	343	77	2	47	56	33	37	8	8	8	121
Seychelles	171	211	207	260	170	229	5	6	8	9	8	8	61	32	43	96
Sierra Leone	110	238	951	225	144	440	0	0	0	0	-4	-2	22	14	57	164
Somalia	108	112	102	107	107	106	...	...	...	...	...	...	41	38	...	...
South Africa	7 502	3 636	4 243	4 559	8 300	5 712	1 151	-76	-257	2 988	6 649	6 938	6	12	9	34
South Sudan	...	...	...	0	-78	-700	...	...	...	...	...	...	...	...	...	...
Sudan	1 726	2 064	1 734	2 311	1 688	1 277	...	...	...	...	...	...	22	14	11	111
Swaziland	66	120	107	32	84	13	7	-8	-2	39	4	-1	10	23	3	166
Tanzania	953	1 813	1 229	1 800	2 131	2 142	0	0	0	0	0	0	19	20	19	91
Togo	49	86	711	122	184	292	37	37	1 060	420	-21	464	16	23	29	143
Tunisia	1 688	1 513	1 148	1 603	1 117	1 060	77	74	21	13	22	39	16	12	11	86
Uganda	842	544	894	1 205	1 096	1 147	29	37	-12	46	-47	0	23	20	17	132
Zambia	426	634	1 110	2 433	1 810	2 484	270	1 095	-2	-702	66	-213	32	23	34	109
Zimbabwe	105	166	387	400	400	545	0	43	43	49	27	72	19	23	...	114
<b>AFRICA</b>	<b>54 379</b>	<b>44 072</b>	<b>47 705</b>	<b>56 435</b>	<b>53 969</b>	<b>53 912</b>	<b>6 225</b>	<b>9 264</b>	<b>6 500</b>	<b>12 386</b>	<b>15 951</b>	<b>13 073</b>	<b>12</b>	<b>11</b>	<b>11</b>	<b>...</b>

Note: \* The Potential Index is based on 16 economic and policy variables. See note on methodology for further details.  
Sources: UNCTAD, FDI Online Database (January 2016) and World Investment Report 2015.

Table 11. Aid flows,\* 2009-14 (USD million)

	ODA net total, all donors						ODA net total, DAC countries						ODA net total, multilateral					
	2009	2010	2011	2012	2013	2014	2009	2010	2011	2012	2013	2014	2009	2010	2011	2012	2013	2014
Algeria	318	198	191	145	201	158	200	143	118	99	98	102	107	57	72	49	57	47
Angola	239	237	193	241	283	231	141	152	118	133	144	92	98	85	74	108	139	139
Benin	682	690	673	509	660	600	326	340	424	260	254	253	353	349	249	244	398	338
Botswana	279	153	118	73	107	100	223	103	88	62	90	62	56	51	22	10	17	37
Burkina Faso	1 082	1 044	982	1 142	1 044	1 120	453	441	451	522	526	562	628	598	529	617	514	553
Burundi	561	629	570	521	556	502	264	282	269	225	249	216	297	347	301	296	307	285
Cabo Verde	196	328	252	246	245	230	162	248	220	218	217	180	34	81	32	27	25	49
Cameroon	648	541	611	596	748	852	268	267	326	257	362	447	380	274	285	339	384	399
Central African Republic	242	261	269	227	202	610	99	113	108	73	112	281	143	148	160	154	88	327
Chad	561	491	458	472	458	388	356	290	246	246	219	158	205	202	213	226	239	229
Comoros	50	67	52	69	79	74	28	22	28	32	39	31	21	28	23	25	38	41
Congo	283	1 315	261	139	151	106	226	1 219	176	49	78	49	57	95	84	89	72	56
Congo, Dem. Rep.	2 357	3 481	5 525	2 847	2 584	2 398	1 100	2 384	4 240	1 655	1 190	1 166	1 255	1 090	1 285	1 191	1 392	1 231
Côte d'Ivoire	2 402	845	1 435	2 635	1 272	922	1 721	437	722	2 102	723	245	678	406	711	525	545	673
Djibouti	167	131	141	149	148	163	98	98	88	86	76	83	58	25	46	54	64	64
Egypt	1 000	589	416	1 807	5 508	3 532	586	363	232	304	306	2	296	148	74	897	36	366
Equatorial Guinea	31	85	24	14	4	1	25	79	22	13	6	5	6	6	3	1	-1	-5
Eritrea	144	161	133	134	81	83	43	36	34	15	14	15	86	105	95	64	67	69
Ethiopia	3 819	3 453	3 493	3 221	3 885	3 585	1 818	1 857	1 930	1 798	1 914	1 915	1 983	1 562	1 548	1 406	1 961	1 661
Gabon	77	104	73	73	90	111	53	84	62	61	75	99	25	20	9	13	14	12
Gambia	127	120	135	139	115	100	22	33	36	30	34	22	105	85	97	107	77	73
Ghana	1 582	1 690	1 800	1 799	1 330	1 126	821	898	898	844	734	606	755	789	902	949	595	514
Guinea	214	218	204	340	473	561	171	92	82	147	249	183	47	128	121	196	201	358
Guinea-Bissau	147	125	120	79	104	109	52	54	52	37	42	27	95	71	67	41	60	81
Kenya	1 776	1 625	2 481	2 653	3 312	2 665	1 225	1 157	1 564	1 669	2 019	1 602	547	464	912	979	1 284	1 055
Lesotho	122	256	257	274	320	104	71	94	143	152	186	49	47	159	110	118	128	41
Liberia	513	1 413	761	566	535	744	342	699	519	334	318	417	171	712	242	232	216	322
Libya	41	9	641	87	129	210	32	17	464	104	72	102	8	-10	59	-20	52	45
Madagascar	444	472	445	375	499	583	242	217	226	185	226	191	201	246	215	189	274	393
Malawi	771	1 015	797	1 169	1 130	930	439	512	448	640	646	509	332	504	350	529	483	416
Mali	984	1 089	1 267	994	1 398	1 234	575	685	777	732	723	678	408	404	487	261	663	548
Mauritania	373	370	381	408	293	257	122	102	129	166	125	91	231	250	239	191	160	140



Table 11. Aid flows, \* 2009-14 (USD million) (cont.)

	ODA net total, all donors						ODA net total, DAC countries						ODA net total, multilateral					
	2009	2010	2011	2012	2013	2014	2009	2010	2011	2012	2013	2014	2009	2010	2011	2012	2013	2014
Mauritius	155	125	187	178	148	49	64	58	113	86	65	75	93	69	75	93	86	-16
Morocco	1 047	990	1 435	1 465	2 004	2 247	705	596	849	884	1 144	1 061	323	382	562	594	739	662
Mozambique	2 012	1 941	2 065	2 074	2 315	2 103	1 289	1 349	1 692	1 466	1 642	1 425	723	590	371	608	658	669
Namibia	326	256	283	255	261	227	249	213	236	191	200	180	78	44	46	65	61	46
Niger	469	739	645	890	797	918	255	375	298	413	336	315	212	361	342	472	453	600
Nigeria	1 657	2 058	1 765	1 912	2 515	2 476	688	846	852	895	1 138	1 062	967	1 210	911	1 014	1 375	1 413
Rwanda	934	1 031	1 263	879	1 086	1 034	520	547	590	424	567	474	411	482	664	453	516	555
Sao Tome and Principe	31	49	72	49	52	39	20	33	38	28	22	18	11	16	34	20	29	20
Senegal	1 016	937	1 055	1 073	992	1 107	515	535	590	706	635	800	497	388	456	370	348	304
Seychelles	23	56	22	36	25	10	12	29	7	6	7	3	11	10	10	18	11	4
Sierra Leone	448	458	423	440	447	911	196	191	173	188	208	521	252	266	245	249	235	383
Somalia	662	506	1 099	990	1 054	1 109	500	317	758	659	717	764	152	181	230	237	211	245
South Africa	1 075	1 027	1 395	1 066	1 295	1 070	862	818	1 026	683	1 015	735	211	207	368	382	279	333
South Sudan	...	...	437	1 187	1 400	1 964	...	...	390	1 039	1 137	1 629	...	...	46	147	261	327
Sudan	2 351	2 028	1 741	1 366	1 503	872	1 912	1 509	1 315	862	1 073	533	379	487	402	416	390	325
Swaziland	56	91	124	88	116	86	19	31	66	55	45	51	38	60	54	30	69	35
Tanzania	2 933	2 957	2 440	2 823	3 431	2 648	1 409	1 654	1 660	1 764	1 952	1 455	1 526	1 298	773	1 044	1 468	1 183
Togo	499	404	542	241	224	208	362	253	327	114	83	80	136	151	214	123	135	130
Tunisia	503	550	922	1 017	710	921	350	355	492	375	202	220	159	192	413	574	464	453
Uganda	1 785	1 688	1 573	1 642	1 701	1 633	1 017	1 001	990	923	964	1 030	768	686	581	718	735	601
Zambia	1 267	917	1 034	955	1 142	995	702	597	701	651	729	775	564	321	327	304	381	220
Zimbabwe	736	713	723	999	824	758	621	505	547	671	542	538	115	209	176	328	283	220
Africa unspecified	5 195	4 335	5 025	5 183	4 476	...	3 052	3 157	3 460	3 754	3 384	...	2 083	1 148	1 467	1 364	1 018	...
<b>AFRICA</b>	<b>47 411</b>	<b>47 061</b>	<b>51 427</b>	<b>50 950</b>	<b>56 460</b>	<b>47 775</b>	<b>27 621</b>	<b>28 485</b>	<b>32 409</b>	<b>30 089</b>	<b>29 870</b>	<b>24 186</b>	<b>19 421</b>	<b>18 239</b>	<b>18 387</b>	<b>19 727</b>	<b>20 754</b>	<b>19 270</b>

Note: ODA : official development assistance. DAC : Development Assistance Committee of OECD.

\* Net disbursements.

Sources: OECD Development Assistance Committee 2016.

Table 12. External debt indicators

	Debt outstanding, at year end				Total debt outstanding (as % of GDP)			Debt service (as % of exports of goods and services)				
	Total (million USD)	Of which:			2014	2015(e)	2016(p)	2017(p)	2014	2015(e)	2016(p)	2017(p)
		Multilateral	Bilateral	Private								
	2014	(as % of total)			2014	2015(e)	2016(p)	2017(p)	2014	2015(e)	2016(p)	2017(p)
Algeria	3 735	0.1	63.7	36.2	1.7	1.9	1.9	1.8	2.6	2.2	2.8	2.8
Angola	32 993	4.0	96.0	0.0	22.2	36.1	31.4	30.5	6.1	3.2	7.8	8.5
Benin	1 784	72.3	27.7	0.0	18.6	19.5	19.4	19.6	2.8	3.3	2.7	2.8
Botswana	4 013	73.3	22.5	4.2	25.3	27.9	28.4	29.6	6.2	8.1	7.7	7.3
Burkina Faso	2 519	78.1	21.9	0.0	20.2	23.2	24.6	27.0	3.7	4.5	4.8	5.4
Burundi	508	45.5	54.5	0.0	17.5	18.2	15.0	12.5	10.4	12.6	13.2	12.0
Cabo Verde	1 840	45.4	54.6	0.0	105.8	110.1	107.8	105.7	10.0	9.0	9.1	9.2
Cameroon	4 894	27.6	67.2	5.2	15.3	20.7	23.4	25.5	4.3	5.8	6.6	7.6
Central African Republic	488	10.5	89.5	0.0	28.3	27.0	25.9	24.6	7.9	8.9	9.1	6.0
Chad	3 981	50.5	49.5	0.0	28.6	25.7	24.4	24.0	10.1	8.1	16.6	15.4
Comoros	153	43.0	57.0	0.0	22.4	28.5	29.3	30.0	7.2	2.9	3.9	4.4
Congo	4 577	4.6	95.4	0.0	32.8	50.7	52.2	49.9	3.6	4.2	4.3	4.4
Congo, Dem. Rep.	6 686	35.9	64.1	0.0	18.6	26.6	27.5	27.6	1.6	2.2	2.2	3.2
Côte d'Ivoire	12 703	7.4	74.5	18.1	37.7	42.8	41.6	39.5	8.0	10.2	12.8	13.7
Djibouti	854	44.8	55.2	0.0	53.7	65.8	75.8	78.5	6.7	18.8	17.3	14.5
Egypt	46 067	27.2	72.7	0.1	15.5	15.0	16.0	16.5	23.2	30.9	28.7	29.8
Equatorial Guinea	1 022	...	99.0	1.0	6.6	6.4	6.3	6.2	2.3	1.8	2.3	2.0
Eritrea	894	65.8	34.2	0.0	23.2	23.9	20.3	21.1	6.8	6.1	4.0	4.0
Ethiopia	12 492	36.1	63.9	0.0	23.2	24.5	24.2	24.3	14.1	19.0	21.7	22.8
Gabon	3 865	11.4	88.6	0.0	21.3	34.1	39.6	35.6	5.5	8.1	9.4	10.7
Gambia	437	57.8	42.2	0.0	53.0	50.7	44.4	39.9	41.2	42.3	41.7	39.0
Ghana	15 821	23.6	74.5	1.9	35.6	64.4	60.4	52.6	5.8	13.2	12.7	15.3
Guinea	1 634	45.6	54.4	0.0	23.5	29.5	34.6	38.7	3.5	7.2	6.8	6.6
Guinea-Bissau	271	37.5	62.5	0.0	26.2	26.2	24.9	24.6	0.8	0.7	1.1	1.5
Kenya	13 368	38.5	61.5	0.0	21.9	24.5	25.0	28.0	14.7	7.3	9.1	10.5
Lesotho	920	72.9	27.1	0.0	42.2	52.1	61.1	65.2	4.3	5.1	5.1	5.5
Liberia	365	28.7	71.3	0.0	17.8	24.0	28.1	30.9	7.7	8.7	5.1	5.1
Libya	5 574	...	57.4	42.6	13.6	16.5	18.9	17.0	0.0	0.0	0.0	0.0
Madagascar	4 615	65.3	34.4	0.3	43.2	49.8	49.8	49.6	22.1	23.5	22.2	20.7
Malawi	1 802	56.5	43.5	0.0	29.8	34.2	36.4	37.8	4.0	5.8	5.2	4.8

Table 12. External debt indicators (cont.)

	Debt outstanding, at year end			Total debt outstanding (as % of GDP)					Debt service (as % of exports of goods and services)				
	Total (million USD)	Of which:		2014	2014	2015(e)	2016(p)	2017(p)	2014	2015(e)	2016(p)	2017(p)	
		Multilateral	Bilateral										Private
	2014												
Mali	3 285	69.6	30.4	0.0	27.9	35.3	36.6	38.0	6.6	9.9	7.6	8.4	
Mauritania	4 553	50.6	49.4	0.0	93.0	66.9	64.4	60.4	9.9	11.0	11.6	12.5	
Mauritius	13 301	8.5	15.9	75.6	105.3	93.8	94.8	97.1	4.7	4.5	4.3	5.0	
Morocco	33 472	31.1	55.6	13.3	30.4	30.2	30.9	31.2	7.7	7.5	8.0	9.6	
Mozambique	12 826	40.7	59.3	0.0	75.7	83.1	116.7	158.1	15.1	25.2	27.4	30.1	
Namibia	5 512	...	20.0	80.0	42.4	56.5	66.5	76.9	42.2	50.4	55.0	56.2	
Niger	4 248	42.8	57.2	0.0	51.5	70.8	73.0	75.4	6.0	9.0	21.3	29.3	
Nigeria	9 906	25.1	12.3	62.6	1.7	2.1	2.4	2.1	0.4	0.5	0.5	0.5	
Rwanda	1 786	54.5	45.5	0.0	22.6	27.9	30.3	35.0	6.0	7.3	7.7	12.3	
Sao Tome and Principe	233	17.2	82.8	0.0	69.0	92.6	93.2	91.6	13.6	13.9	13.1	12.9	
Senegal	11 535	48.5	45.6	5.9	75.3	80.5	79.4	76.9	10.7	9.1	11.0	12.7	
Seychelles	1 670	...	49.1	46.5	119.7	106.4	100.3	99.1	2.8	4.0	4.7	4.7	
Sierra Leone	1 230	45.6	54.4	0.0	24.8	33.6	33.4	28.9	2.3	3.5	2.2	3.2	
Somalia	...	...	...	...	...	...	...	...	...	...	...	...	
South Africa	145 082	2.5	51.9	45.6	41.5	48.0	56.6	66.2	42.3	46.3	45.8	48.7	
South Sudan	...	...	...	...	...	...	...	...	...	...	...	...	
Sudan	47 116	16.0	84.0	0.0	56.8	47.7	46.2	44.4	2.4	2.1	2.2	2.7	
Swaziland	507	42.9	57.1	0.0	11.5	15.2	17.0	18.5	8.1	7.6	8.8	9.0	
Tanzania	14 044	47.2	37.0	15.8	29.2	35.2	35.7	36.4	3.7	5.1	5.7	6.7	
Togo	1 153	29.4	70.6	0.0	25.7	31.5	32.2	33.2	4.8	4.2	4.3	3.6	
Tunisia	27 352	33.4	58.2	8.4	57.5	69.0	70.7	73.2	9.2	7.1	9.3	8.7	
Uganda	7 964	71.1	28.9	0.0	29.0	41.3	45.3	47.8	7.2	10.2	12.6	11.6	
Zambia	6 170	16.4	65.3	18.3	22.7	31.9	40.0	48.1	2.9	4.2	6.5	7.3	
Zimbabwe	13 080	14.5	33.2	52.3	92.1	121.2	135.4	147.6	21.7	26.0	27.0	27.0	
<b>AFRICA</b>	<b>556 897</b>	<b>37.6</b>	<b>55.1</b>	<b>10.1</b>	<b>22.3</b>	<b>26.3</b>	<b>27.7</b>	<b>27.9</b>	<b>10.7</b>	<b>12.1</b>	<b>11.8</b>	<b>12.3</b>	

Note: Estimates (e) and projections (p).

Sources: AfDB Statistics Department; IMF, World Economic Outlook Database, October 2015; World Bank, GDF Online Database.

Table 13. Demographic indicators

	Total population (thousands) 2015	Urban population (% of total) 2015	Sex ratio (males per 100 females) 2015	Population growth rate (%)		Infant mortality rate (per 1 000) 2015	Total fertility rate (per woman) 2015	Mortality under age 5 (per 1 000) 2015	Distribution by age (%)		
				2008	2015				0-14	15-64	65+
Algeria	39 667	72.5	101.3	1.6	1.9	21.9	2.8	25.5	28.5	65.5	5.9
Angola	25 022	40.2	98.5	3.4	3.3	96.0	6.0	156.9	47.7	50.0	2.3
Benin	10 880	44.0	99.5	3.1	2.7	64.2	4.7	99.5	42.2	55.0	2.9
Botswana	2 262	52.2	99.9	1.9	1.9	34.8	2.8	43.6	32.0	64.4	3.6
Burkina Faso	18 106	29.5	98.5	3.1	2.9	60.9	5.4	88.6	45.6	52.0	2.4
Burundi	11 179	11.7	97.7	3.6	3.3	54.1	5.9	81.7	44.8	52.7	2.5
Cabo Verde	521	64.0	97.4	0.5	1.3	20.7	2.3	24.5	29.7	65.8	4.6
Cameroon	23 344	54.5	100.0	2.6	2.5	57.1	4.6	87.9	42.5	54.3	3.2
Central African Rep.	4 900	39.2	97.2	1.9	2.0	91.5	4.2	130.1	39.1	57.1	3.9
Chad	14 037	21.8	100.3	3.3	3.3	85.0	6.1	138.7	47.7	49.8	2.5
Comoros	788	27.6	101.8	2.5	2.4	55.1	4.4	73.5	40.3	56.9	2.8
Congo	4 620	66.1	100.1	3.2	2.6	33.2	4.8	45.0	42.6	53.7	3.7
Congo, Dem. Rep.	77 267	39.2	99.5	3.3	3.2	74.5	5.9	98.3	46.0	51.0	3.0
Côte d'Ivoire	22 702	50.8	103.5	2.1	2.5	66.6	4.9	92.6	42.5	54.5	3.0
Djibouti	888	78.4	100.9	1.3	1.3	54.2	3.1	65.3	32.7	63.1	4.2
Egypt	91 508	39.9	102.1	1.8	2.2	20.3	3.3	24.0	33.2	61.6	5.2
Equatorial Guinea	845	37.8	105.1	3.1	2.9	68.2	4.7	94.1	39.3	57.9	2.9
Eritrea	5 228	29.2	100.4	2.1	2.3	34.1	4.2	46.5	42.8	54.6	2.6
Ethiopia	99 391	19.4	99.6	2.7	2.5	41.4	4.3	59.2	41.4	55.1	3.5
Gabon	1 725	88.5	102.3	2.3	2.2	36.1	3.8	50.8	37.1	57.8	5.1
Gambia	1 991	59.0	98.0	3.3	3.3	47.9	5.7	68.9	46.2	51.5	2.3
Ghana	27 410	53.2	99.0	2.6	2.3	42.8	4.1	61.6	38.8	57.8	3.4
Guinea	12 609	36.4	100.6	2.7	2.7	61.0	4.9	93.7	42.5	54.4	3.1
Guinea-Bissau	1 844	47.8	98.6	2.2	2.4	60.3	4.8	92.5	40.8	56.0	3.2
Kenya	46 050	26.0	99.9	2.7	2.6	35.5	4.3	49.4	41.9	55.3	2.8
Lesotho	2 135	27.1	98.0	0.8	1.2	69.2	3.1	90.2	36.1	59.8	4.1
Liberia	4 503	49.7	101.6	4.3	2.4	52.8	4.6	69.9	42.3	54.7	3.0
Libya	6 278	79.0	101.1	1.7	0.3	11.4	2.4	13.4	29.8	65.6	4.5
Madagascar	24 235	35.1	99.4	2.9	2.8	35.9	4.4	49.6	41.7	55.5	2.8
Malawi	17 215	16.4	99.7	3.0	3.1	43.4	5.0	64.0	45.2	51.4	3.4
Mali	17 600	36.9	101.9	3.4	3.0	74.5	6.1	114.7	47.5	50.0	2.5

Table 13. Demographic indicators (cont.)

	Total population (thousands) 2015	Urban population (% of total) 2015	Sex ratio (males per 100 females) 2015	Population growth rate (%)		Infant mortality rate (per 1,000) 2015	Total fertility rate (per woman) 2015	Mortality under age 5 (per 1,000) 2015	Distribution by age (%)		
				2008	2015				0-14	15-64	65+
Mauritania	4 068	60.0	101.3	2.6	2.5	65.1	4.5	84.7	40.0	56.8	3.2
Mauritius*	1 273	39.1	97.6	0.4	0.4	11.8	1.5	13.5	19.3	71.1	9.6
Morocco	34 378	59.5	97.7	1.1	1.3	23.7	2.5	27.6	27.2	66.6	6.2
Mozambique	27 978	31.2	95.5	2.8	2.8	56.7	5.3	78.5	45.3	51.3	3.3
Namibia	2 459	45.4	94.8	1.6	2.3	32.8	3.5	45.4	36.7	59.8	3.5
Niger	19 899	18.1	101.6	3.8	4.1	57.1	7.6	95.5	50.5	47.0	2.6
Nigeria	182 202	48.1	103.8	2.7	2.7	69.4	5.6	108.8	44.0	53.3	2.7
Rwanda	11 610	30.8	91.9	2.8	2.4	31.1	3.8	41.7	41.1	56.2	2.8
Sao Tome and Principe	190	69.3	99.1	2.2	2.1	34.6	4.5	47.3	42.6	54.3	3.1
Senegal	15 129	43.3	96.5	2.8	3.1	41.7	5.0	47.2	43.8	53.3	2.9
Seychelles	96	52.4	102.6	0.9	0.6	11.7	2.3	13.6	23.4	69.7	6.9
Sierra Leone	6 453	39.1	98.0	2.4	2.2	87.1	4.5	120.4	42.4	55.0	2.7
Somalia	10 787	40.8	99.1	2.5	2.6	85.0	6.4	136.8	46.7	50.5	2.8
South Africa	54 490	63.6	96.8	1.3	1.0	33.6	2.3	40.5	29.2	65.7	5.0
South Sudan	12 340	18.5	100.3	4.5	3.6	60.3	4.9	92.6	42.1	54.4	3.5
Sudan	40 235	33.3	100.8	2.5	2.2	47.6	4.3	70.1	40.5	56.2	3.3
Swaziland	1 287	21.3	97.8	1.7	1.4	44.5	3.2	60.7	37.4	59.1	3.6
Tanzania	53 470	30.9	98.8	3.2	3.2	35.2	5.1	48.7	45.2	51.6	3.2
Togo	7 305	39.2	97.7	2.8	2.7	52.3	4.5	78.4	42.2	55.0	2.8
Tunisia	11 254	66.7	97.7	1.1	1.1	12.1	2.1	14.0	23.4	69.1	7.6
Uganda	39 032	16.6	99.9	3.4	3.3	37.7	5.7	54.6	48.1	49.4	2.5
Zambia	16 212	39.2	99.7	3.0	3.1	43.3	5.3	64.0	45.9	51.2	2.9
Zimbabwe	15 603	31.2	97.1	1.5	2.3	46.6	3.9	70.7	41.6	55.4	3.0
<b>AFRICA</b>	<b>1 184 501</b>	<b>39.7</b>	<b>100.1</b>	<b>2.6</b>	<b>2.6</b>	<b>52.2</b>	<b>4.6</b>	<b>75.5</b>	<b>41.0</b>	<b>55.5</b>	<b>3.5</b>

Note: \*Including Agalega, Rodrigues and Saint Brandon.

Sources: United Nations, Department of Economic and Social Affairs, Population Division, World Population Prospects, The 2015 Revision. AfDB Statistics Department, various domestic authorities and AfDB estimates.

Table 14. Poverty and income distribution indicators

	National poverty line* Population below the poverty line (%)			International poverty line Population below the poverty line (%)			Gini coefficient**			Share of consumption (%)		
	Survey year	Rural	Urban	National	Survey year	Below USD 1.90	Below USD 3.10	Survey year	Index	Lowest 10%	Highest 10%	
	...	...	...	...	...	...	...	1995	35.3	2.9	26.9	
Algeria	2008	58.3	18.7	36.6	2008	30.1	54.5	2008	42.7	2.1	32.3	
Angola	2011	39.7	31.4	36.2	2011	53.1	75.6	2011	43.4	2.5	34.5	
Benin	2009	24.3	11.0	19.3	2009	18.2	35.7	2009	60.5	1.1	49.6	
Botswana	2009	52.8	25.2	46.7	2009	55.3	80.5	2009	39.8	2.7	32.1	
Burkina Faso	2006	68.9	34.0	66.9	2006	77.7	92.2	2006	33.4	4.0	28.0	
Burundi	2007	44.3	13.2	26.6	2007	17.6	39.3	2007	47.2	2.0	37.1	
Cabo Verde	2007	55.0	12.2	39.9	2007	29.3	54.3	2007	42.8	2.5	33.0	
Cameroon	2008	69.4	49.6	62.0	2008	66.3	82.3	2008	56.2	1.2	46.2	
Central African Republic	2011	52.5	20.9	46.7	2011	38.4	64.8	2011	43.3	1.8	32.4	
Chad	2004	48.7	34.5	44.8	2004	13.5	32.3	2004	55.9	1.5	48.1	
Comoros	2011	74.8	...	46.5	2011	28.7	52.9	2011	40.2	2.2	29.9	
Congo, Dem. Rep.	2012	64.9	61.6	63.6	2012	77.2	90.7	2012	42.1	2.1	32.0	
Côte d'Ivoire	2015	56.8	35.9	46.3	2008	29.0	55.1	2008	43.2	1.8	32.6	
Djibouti	...	...	...	...	2012	18.3	37.0	2012	45.1	1.3	34.4	
Egypt	2010	32.3	15.3	25.2	...	...	...	2008	30.8	4.0	26.6	
Equatorial Guinea	2006	79.9	31.5	76.8	...	...	...	...	...	...	...	
Eritrea	1993	...	62.0	69.0	...	...	...	...	...	...	...	
Ethiopia	2010	30.4	25.7	29.6	2010	33.5	71.3	2010	33.2	3.2	27.4	
Gabon	2005	44.6	29.8	32.7	2005	8.0	24.4	2005	42.2	2.3	33.2	
Gambia	2010	73.9	32.7	48.4	2003	45.3	68.0	2003	47.3	1.8	36.9	
Ghana	2012	37.9	10.6	24.2	2005	25.2	49.0	2005	42.8	1.9	32.7	
Guinea	2012	64.7	35.4	55.2	2012	35.3	68.7	2012	33.7	3.0	26.4	
Guinea-Bissau	2010	75.6	51.0	69.3	2010	67.1	83.6	2010	50.7	1.6	42.0	
Kenya	2005	49.1	33.7	45.9	2005	33.6	58.9	2005	48.5	1.7	38.8	
Lesotho	2010	61.2	39.6	57.1	2010	59.7	77.3	2010	54.2	0.9	40.9	
Liberia	2007	67.7	55.1	63.8	2007	68.6	89.6	2007	36.5	2.4	28.3	
Libya	...	...	...	...	...	...	...	...	...	...	...	
Madagascar	2010	81.5	51.1	75.3	2010	81.8	92.9	2010	40.6	2.6	33.2	
Malawi	2010	56.6	17.3	50.7	2010	70.9	87.6	2010	46.1	2.2	37.5	
Mali	2009	50.6	18.9	43.6	2009	49.3	77.7	2009	33.0	3.3	25.7	
Mauritania	2008	59.4	20.8	42.0	2008	10.9	32.5	2008	37.5	2.5	27.9	

Table 14. Poverty and income distribution indicators (cont.)

	National poverty line*				International poverty line				Gini coefficient**			Share of consumption (%)			
	Population below the poverty line (%)				Population below the poverty line (%)				Survey year	Index	Lowest 10%	Highest 10%	Survey year	Lowest 10%	Highest 10%
	Survey year	Rural	Urban	National	Survey year	Below USD 1.90	Below USD 3.10								
Mauritius	...	...	...	...	2012	0.5	3.0	2012	35.8	3.0	29.0				
Morocco	2007	14.4	4.8	8.9	2007	3.1	15.5	2007	40.7	2.6	33.1				
Mozambique	2008	56.9	49.6	54.7	2008	68.7	87.5	2008	45.6	1.9	36.8				
Namibia	2009	37.4	14.6	28.7	2009	22.6	45.7	2009	61.0	1.3	51.8				
Niger	2011	55.2	18.6	48.9	2011	50.3	81.8	2011	31.5	3.8	26.4				
Nigeria	2009	52.8	34.1	46.0	2009	53.5	76.5	2009	43.0	2.0	32.7				
Rwanda	2010	48.7	22.1	44.9	2010	60.3	80.7	2010	51.3	2.1	44.3				
Sao Tome and Principe	2009	59.4	63.8	61.7	2010	33.9	69.2	2010	30.8	3.5	24.2				
Senegal	2010	57.1	33.1	46.7	2011	38.0	66.3	2011	40.3	2.3	31.1				
Seychelles	2006	37.2	39.0	37.8	2006	0.4	1.0	2006	42.8	2.4	33.8				
Sierra Leone	2011	66.1	31.2	52.9	2011	52.3	80.0	2011	34.0	3.3	26.9				
Somalia	...	...	...	...	...	...	...	...	...	...	...				
South Africa	2010	77.0	39.2	53.8	2011	16.6	34.7	2011	63.4	0.9	51.3				
South Sudan	2009	55.4	24.4	50.6	...	...	...	...	...	...	...				
Sudan	2009	57.6	26.5	46.5	2009	14.9	38.9	2009	35.4	2.6	26.7				
Swaziland	2009	73.1	31.1	63.0	2009	42.0	63.1	2009	51.5	1.5	40.0				
Tanzania	2011	33.3	15.5	28.2	2011	46.6	76.1	2011	37.8	3.1	31.0				
Togo	2011	73.4	34.6	58.7	2011	54.2	74.5	2011	46.0	1.9	34.5				
Tunisia	2010	...	...	15.5	2010	2.0	8.4	2010	35.8	2.6	27.0				
Uganda	2012	22.4	9.6	19.5	2012	33.2	63.0	2012	42.4	2.4	33.9				
Zambia	2010	77.9	27.5	60.5	2010	64.4	78.9	2010	55.6	1.5	45.2				
Zimbabwe	2011	84.3	46.5	72.3	...	...	...	...	...	...	...				

Notes: \* The national poverty line is defined as two-thirds of the average consumption.

\*\* The Gini coefficient is based on income distribution.

Sources: Domestic authorities and World Bank, *Online Database, Country DHS*.

Table 15. Access to services

	Telecommunications						Access to electricity		Water supply coverage			Sanitation coverage		
	Main telephone line per 100 inhabitants		Mobile line per 100 inhabitants		Internet users per 100 inhabitants		Electricity consumption (KWh - millions)		Water supply coverage (%)			Sanitation coverage (%)		
	2007	2014	2007	2014	2007	2014	2007	2014	Total	Urban	Rural	Total	Urban	Rural
Algeria	8.74	7.76	78.53	92.95	9.45	18.09	37 827	54 928	84	84	82	88	90	82
Angola	0.53	1.27	28.01	63.48	3.20	21.26	3 948	5 848	49	75	28	52	89	22
Benin	1.27	1.85	23.56	99.65	1.79	5.30	891	1 208	78	85	72	20	36	7
Botswana	7.15	8.30	60.14	167.30	5.28	18.50	3 216	3 650	96	99	92	63	79	43
Burkina Faso	0.82	0.72	13.05	71.74	0.75	9.40	730	1 212	82	97	76	20	50	7
Burundi	0.34	0.21	3.24	30.46	0.70	1.38	183	250	76	91	74	48	44	49
Cabo Verde	14.84	11.62	31.47	121.79	8.28	40.26	275	386	92	94	87	72	82	54
Cameroon	0.99	4.61	23.75	75.69	2.93	11.00	5 197	5 942	76	95	53	46	62	27
Central African Rep.	...	0.02	8.28	24.54	0.38	4.03	160	170	68	90	54	22	44	7
Chad	0.30	0.18	8.59	39.75	0.85	2.50	137	186	51	72	45	12	31	6
Comoros	4.11	3.12	9.82	50.90	2.50	6.98	43	41	90	93	89	36	48	31
Congo	0.36	0.36	34.26	108.15	2.76	7.11	786	1 612	76	96	40	15	20	6
Congo, Dem. Rep.	0.01	0.00	11.53	53.49	0.37	3.00	6 918	8 348	52	81	31	29	29	29
Côte d'Ivoire	1.38	1.17	41.61	106.25	1.80	14.60	4 911	6 552	82	93	69	22	33	10
Djibouti	1.77	2.47	8.71	32.39	1.62	10.71	326	396	90	97	65	47	60	5
Egypt	15.13	7.57	40.54	114.31	16.03	31.70	129 177	162 149	99	100	99	95	97	93
Equatorial Guinea	1.56	1.94	23.45	66.39	1.56	18.86	100	97	48	73	31	75	80	71
Eritrea	0.72	0.98	1.62	6.39	0.41	0.99	271	346	58	73	53	16	45	7
Ethiopia	1.09	0.85	1.50	31.59	0.37	2.90	3 504	7 742	57	93	49	28	27	28
Gabon	1.83	1.08	80.77	171.38	5.77	9.81	1 742	2 318	93	97	67	42	43	32
Gambia	3.18	2.93	52.33	119.63	6.21	15.56	236	261	90	94	84	59	62	55
Ghana	1.67	0.98	33.76	114.82	3.85	18.90	8 043	12 127	89	93	84	15	20	9
Guinea	0.22	0.00	19.91	72.10	0.78	1.72	819	652	77	93	67	20	34	12
Guinea-Bissau	0.31	0.29	19.96	63.48	2.21	3.32	30	35	79	99	60	21	34	8
Kenya	1.23	0.40	30.06	73.84	7.95	43.40	6 415	8 412	63	82	57	30	31	30
Lesotho	2.43	1.96	24.67	85.02	3.45	11.00	590	794	82	95	77	30	37	28
Liberia	0.06	0.23	15.98	73.35	0.55	5.41	230	280	76	89	63	17	28	6
Libya	16.76	11.30	77.83	161.12	4.72	17.76	29 883	28 231	...	...	...	97	97	96
Madagascar	0.69	1.06	11.45	41.21	0.65	3.70	1 261	1 570	52	82	35	12	18	9
Malawi	1.28	0.38	7.66	33.47	0.97	5.83	1 689	1 566	90	96	89	41	47	40



Table 15. Access to services (cont.)

	Telecommunications						Access to electricity		Water supply coverage			Sanitation coverage		
	Main telephone line per 100 inhabitants		Mobile line per 100 inhabitants		Internet users per 100 inhabitants		Electricity consumption (KWh - millions)		Water supply coverage (%)			Sanitation coverage (%)		
	2007	2014	2007	2014	2007	2014	2007	2014	Total	Urban	Rural	Total	Urban	Rural
Mali	0.63	0.98	19.89	149.07	0.81	7.00	1 148	1 210	77	97	64	25	38	16
Mauritania	1.21	1.29	42.46	94.20	1.43	10.70	753	870	58	58	57	40	58	14
Mauritius*	29.57	29.80	76.12	132.25	20.22	41.44	2 519	2 888	100	100	100	93	94	93
Morocco	7.81	7.43	65.31	131.71	21.50	56.80	24 578	33 436	85	99	65	77	84	66
Mozambique	0.35	0.33	13.89	69.82	0.91	5.94	12 001	14 706	51	81	37	21	42	10
Namibia	6.64	7.78	38.46	113.76	4.84	14.84	4 197	4 149	91	98	85	34	54	17
Niger	0.29	0.57	6.34	44.44	0.39	1.95	646	993	58	100	49	11	38	5
Nigeria	1.07	0.10	27.45	77.84	6.77	42.68	20 506	28 132	69	81	57	29	33	25
Rwanda	0.23	0.41	6.40	64.02	2.12	10.60	261	483	76	87	72	62	59	63
Sao Tome and Principe	4.68	3.44	18.42	64.94	14.59	24.41	48	67	97	99	94	35	41	23
Senegal	2.26	2.14	30.50	98.84	6.89	17.70	2 567	3 364	79	93	67	48	65	34
Seychelles	25.49	22.73	86.70	162.19	38.38	54.26	262	347	96	96	96	98	98	98
Sierra Leone	0.56	0.27	14.33	76.66	0.24	2.10	138	164	63	85	48	13	23	7
Somalia	1.12	0.53	6.73	50.90	1.12	1.63	324	350	...	...	...	...	...	...
South Africa	9.84	6.86	85.28	149.19	8.07	49.00	239 744	236 967	93	100	81	66	70	61
South Sudan	...	0.00	...	24.50	...	15.90	...	454	59	67	57	7	16	4
Sudan	0.85	1.08	20.36	72.20	8.66	24.64	...	10 251	...	...	...	...	...	...
Swaziland	3.95	3.50	33.48	72.32	4.10	27.10	1 401	1 397	74	94	69	57	63	56
Tanzania	0.40	0.30	20.07	62.77	1.60	4.86	4 441	5 633	56	77	46	16	31	8
Togo	1.70	0.76	20.40	64.58	2.20	5.70	788	1 110	63	91	44	12	25	3
Tunisia	12.39	8.54	76.34	128.49	17.10	46.16	14 578	17 685	98	100	93	92	97	80
Uganda	0.54	0.84	13.65	52.43	3.67	17.71	2 054	2 742	79	96	76	19	29	17
Zambia	0.76	0.76	21.79	67.34	4.87	17.34	9 623	12 002	65	86	51	44	56	36
Zimbabwe	2.71	2.26	9.62	80.82	10.85	19.89	8 445	10 223	77	97	67	37	49	31
<b>AFRICA</b>	<b>3.32</b>	<b>2.15</b>	<b>28.59</b>	<b>78.08</b>	<b>5.69</b>	<b>21.37</b>	<b>600 557</b>	<b>706 931</b>	<b>72</b>	<b>88</b>	<b>60</b>	<b>39</b>	<b>51</b>	<b>31</b>

Note: \* Including Agalega, Rodrigues and Saint Brandon.

Sources: AfDB Statistics Department; Telecommunications: International Telecommunication Union, ICT Indicators Online Database.

Electricity: United Nations Statistics Division, Energy Statistics Database.

Water supply coverage and sanitation coverage: WHO/UNICEF Joint Monitoring Programme (JMP) for Water Supply and Sanitation. Domestic authorities.

Table 16. Basic health indicators

	Life expectancy at birth (years)		Prevalence of undernourished in total population (%)		Food availability (Kcal/person/day)		Total health expenditure			Health personnel (per 100 000)				
	2015	2010-2015		2015	2011-13	2015	As % of GDP	Per capita** (USD)	Distribution		Survey year	Physicians	Survey year	Nurses and midwives
		With AIDS	No-AIDS scenario						Public (%)	Private (%)				
Algeria	75.0	...	...	5	3 296	...	6.6	313.5	74.2	25.8	2007	121	2007	195
Angola	52.7	51.7	52.8	14	2 473	...	3.8	267.2	66.7	33.3	2009	17	2009	166
Benin	59.8	56.8	57.5	8	2 594	...	4.6	36.7	54.2	45.8	2008	6	2008	77
Botswana	64.5	52.7	69.6	24	2 285	...	5.4	397.3	57.1	42.9	2009	40	2009	335
Burkina Faso	59.0	56.0	57.7	21	2 720	...	6.4	45.7	58.5	41.5	2010	5	2010	57
Burundi	57.1	51.1	53.6	...	...	...	8.0	21.5	54.7	45.3	2004	3	2004	19
Cabo Verde	73.5	...	...	9	2 716	...	4.4	164.7	73.7	26.3	2011	31	2011	56
Cameroon	56.0	52.5	56.1	10	2 586	...	5.1	67.2	34.7	65.3	2009	8	2009	44
Central African Rep.	51.5	49.5	53.1	48	2 154	...	3.9	13.0	50.3	49.7	2009	5	2009	26
Chad	51.9	50.1	52.1	34	2 110	...	3.6	37.2	36.9	63.1	2006	4	2006	19
Comoros	63.6	...	...	...	...	...	5.8	51.5	32.7	67.3	2004	15	2004	74
Congo	62.9	58.0	60.3	31	2 195	...	4.1	130.7	77.5	22.5	2007	10	2007	82
Congo, Dem. Rep.	59.1	48.9	49.9	...	...	...	3.5	15.9	53.1	46.9	2004	11	2004	53
Côte d'Ivoire	51.9	56.4	59.5	13	2 799	...	5.7	86.8	33.1	66.9	2008	14	2008	48
Djibouti	62.3	58.5	59.3	16	2 526	...	8.9	137.4	60.0	40.0	2006	23	2006	80
Egypt	71.3	...	...	5	3 557	...	5.1	151.3	40.7	59.3	2009	283	2009	352
Equatorial Guinea	57.9	51.5	53.9	...	...	...	3.5	713.9	77.8	22.2	2004	30	2004	54
Eritrea	64.2	62.2	62.7	...	...	...	3.0	16.5	45.4	54.6	2004	5	2004	58
Ethiopia	64.6	60.0	60.9	32	2 131	...	5.1	24.5	61.0	39.0	2009	3	2009	25
Gabon	64.9	63.3	66.8	5	2 781	...	3.8	441.4	54.4	45.6	2004	29	2004	502
Gambia	60.5	59.0	60.2	5	2 849	...	6.0	28.9	60.1	39.9	2008	11	2008	87
Ghana	61.5	64.7	66.2	5	3 003	...	5.4	99.5	60.6	39.4	2010	10	2010	93
Guinea	59.2	54.7	55.6	16	2 553	...	4.7	24.8	35.8	64.2	2005	10	2005	4
Guinea-Bissau	55.5	48.8	49.9	21	2 304	...	5.5	31.8	20.3	79.7	2009	7	2009	59
Kenya	62.2	58.0	62.7	21	2 206	...	4.5	44.5	41.7	58.3	2013	20	2012	82
Lesotho	50.1	49.1	64.1	11	2 595	...	11.5	123.4	79.1	20.9	2003	5	2003	62
Liberia	61.2	57.5	58.7	32	2 251	...	10.0	44.4	35.9	64.1	2008	1	2008	27
Libya	71.8	...	...	...	...	...	4.3	432.8	70.3	29.7	2009	190	2009	680
Madagascar	65.5	...	...	33	2 052	...	4.2	19.6	62.6	37.4	2007	16	2004	32
Malawi	63.9	55.1	63.2	21	2 334	...	8.3	26.2	50.0	50.0	2009	2	2009	34

Table 16. Basic health indicators (cont.)

	Life expectancy at birth (years)		Prevalence of undernourished in total population (%)	Food availability (Kcal/person/day)	Total health expenditure			Health personnel (per 100 000)				
	With AIDS	No-AIDS scenario			As % of GDP	Per capita** (USD)	Distribution		Survey year	Physicians	Survey year	Nurses and midwives
	2015	2010-2015	2015	2011-13			Public (%)	Private (%)				
Mali	58.5	52.1	53.5	2 833	7.1	53.3	39.7	60.3	2010	8	2010	43
Mauritania	63.2	...	...	2 791	3.8	48.4	49.0	51.0	2009	13	2009	67
Mauritius*	74.6	...	...	3 055	4.8	462.5	49.1	50.9	2004	106	2004	373
Morocco	74.3	...	...	3 334	6.0	189.2	33.9	66.1	2009	62	2009	89
Mozambique	55.5	51.0	58.2	2 283	6.8	40.3	46.4	53.6	2012	4	2012	41
Namibia	65.1	62.7	71.3	2 086	7.7	422.6	60.4	39.6	2007	37	2007	278
Niger	61.9	...	...	2 546	6.5	27.2	36.7	63.3	2008	2	2008	14
Nigeria	53.1	52.5	55.1	2 700	3.7	115.0	23.9	76.1	2009	41	2008	161
Rwanda	64.7	55.8	57.5	2 148	11.1	70.5	58.8	41.2	2010	6	2010	69
Sao Tome and Principe	66.6	...	...	2 676	6.9	110.0	28.8	71.2	2004	49	2004	187
Senegal	66.9	...	...	2 454	4.2	45.6	52.3	47.7	2008	6	2008	42
Seychelles	73.3	...	...	...	4.0	550.8	92.0	8.0	2012	107	2012	481
Sierra Leone	51.3	48.2	49.1	2 333	11.8	95.8	14.3	85.7	2010	2	2010	17
Somalia	55.7	...	...	...	...	...	...	...	2006	4	2006	11
South Africa	57.7	53.8	65.8	3 007	8.9	593.5	48.4	51.6	2013	78	2013	511
South Sudan	56.1	...	...	...	2.2	18.1	35.3	64.7	...	...	...	...
Sudan	63.7	...	...	2 346	6.5	115.0	21.1	78.9	2008	28	2008	84
Swaziland	48.9	49.2	63.7	2 275	8.4	256.1	74.7	25.3	2009	17	2009	160
Tanzania	65.5	59.3	63.7	2 208	7.3	49.3	36.3	63.7	2012	3	2012	44
Togo	60.2	57.8	60.1	2 366	8.6	54.4	52.1	47.9	2008	5	2008	27
Tunisia	75.0	...	...	3 362	7.1	308.6	59.3	40.7	2010	122	2009	328
Uganda	59.2	54.7	59.0	2 279	9.8	59.1	44.4	55.6	2005	12	2005	131
Zambia	60.8	49.6	57.7	1 930	5.0	92.8	58.3	41.7	2012	17	2010	78
Zimbabwe	59.2	53.5	67.5	2 110	...	...	...	...	2011	8	2011	134
<b>AFRICA</b>	<b>61.2</b>	<b>54.2</b>	<b>57.9</b>	<b>2 448</b>	<b>5.7</b>	<b>236.1</b>	<b>45.5</b>	<b>54.5</b>	...	...	...	...

Note: \* Including Agalega, Rodrigues and Saint Brandon.

\*\* At average exchange rate.

Sources: AfDB Statistics Department; Life expectancy at birth and HIV/AIDS: United Nations, Department of Economic and Social Affairs, Population Division, World Population Prospects, The 2015 Revision.

Undernourishment prevalence and food availability: FAO, Food Insecurity Online Database.

Total health expenditure and public health expenditure: WHO Online Database.

Table 17. Major diseases

	Healthy life expectancy at birth (years)		HIV/AIDS		Malaria (number of reported cases)	Tuberculosis (new and relapse cases)	Measles (number of reported cases)	Vaccination (%)		
	Total	Male	Female	People living with HIV/AIDS (000)				Adult prevalence (%)	AIDS deaths in adults & children (000)	MCV
	2013	2013	2013	2014	2014	2014	2014	2014	2014	
Algeria	62	62	63	11	0.2	16	22 517	0	95	95
Angola	44	43	46	304	11.8	1 999 868	53 552	11 699	85	80
Benin	50	50	51	78	2.4	1 078 834	3 886	786	63	70
Botswana	54	53	55	392	5.1	0 456	6 019	1	97	95
Burkina Faso	51	50	51	108	3.8	3 769 051	5 546	343	88	91
Burundi	48	47	49	85	3.9	4 141 387	7 226	0	94	95
Cabo Verde	64	61	66	3	0.1	0 022	274	0	93	95
Cameroon	49	48	49	657	34.2	26 651	26 038	831	80	87
Central African Republic	44	43	44	135	4.3	116 300	10 186	210	49	47
Chad	44	44	45	215	11.7	754 565	11 973	1 275	54	46
Comoros	54	53	55	...	...	53 156	148	0	80	80
Congo	50	50	51	81	4.4	43 232	10 017	71	80	90
Congo, Dem. Rep.	44	43	46	447	24.1	6 715 223	115 795	33 711	77	80
Côte d'Ivoire	46	45	46	460	21.8	2 506 953	23 275	50	63	67
Djibouti	53	52	54	10	0.6	1 684	2 220	...	71	78
Egypt	62	61	63	9	0.3	0	7 177	1 314	93	94
Equatorial Guinea	47	47	48	32	0.8	13 129	1 166	13	44	24
Eritrea	55	53	56	16	0.7	21 317	2 391	127	96	94
Ethiopia	56	54	57	730	23.4	2 645 454	119 592	12 739	70	77
Gabon	54	53	55	48	1.5	28 982	5 608	33	61	70
Gambia	53	52	54	20	0.9	240 792	2 552	1	96	96
Ghana	54	53	55	250	9.2	1 639 451	14 668	124	92	98
Guinea	50	49	50	118	3.8	211 257	11 734	175	52	51
Guinea-Bissau	46	45	47	42	3.7	54 584	2 282	1	69	80
Kenya	53	52	54	1 367	33.0	2 335 286	88 025	354	79	81
Lesotho	43	41	44	315	9.3	...	8 840	0	92	96
Liberia	52	52	53	33	2.0	1 244 220	2 702	34	58	50
Libya	64	64	65	...	...	...	1 153	372	93	94
Madagascar	55	54	56	39	3.2	387 045	28 466	3	64	73
Malawi	51	50	52	1 064	32.6	1 280 892	16 267	3	85	91

Table 17. Major diseases (cont.)

	Healthy life expectancy at birth (years)			HIV / AIDS		Malaria (number of reported cases)	Tuberculosis (new and relapse cases)	Measles Incidence (number of reported cases)	Vaccination (%)			
	Total	Male	Female	People living with HIV / AIDS (000)	Adult prevalence (%)				AIDS deaths in adults & children (000)	Survey year	MCV	DTP3
		2013	2014			2014						
Mali	49	50	48	133	1.4	5.3	2013	1 367 218	5 809	290	80	77
Mauritania	54	53	55	16	0.7	1.1	2013	1 587	2 420	14	84	84
Mauritius	65	62	68	8	0.9	0.5	...	...	126	0	98	97
Morocco	61	60	62	29	0.1	1.1	2012	0	29 843	10	99	99
Mozambique	46	46	47	1 543	10.6	44.9	2013	2 998 874	57 773	9	85	78
Namibia	58	56	60	264	16.0	5.1	2013	4 911	8 972	477	83	88
Niger	51	51	51	52	0.5	3.4	2013	1 431 798	10 851	1 142	72	68
Nigeria	47	47	47	3 392	3.2	174.3	2010	551 187	86 464	6 855	51	66
Rwanda	56	55	57	211	2.8	3.0	2013	962 618	5 761	10	98	99
Sao Tome and Principe	57	56	59	1	0.8	0.1	2013	9 243	158	0	92	95
Senegal	55	55	56	44	0.5	2.4	2013	345 889	13 332	32	80	89
Seychelles	67	63	71	...	...	...	...	...	13	0	99	99
Sierra Leone	39	39	40	54	1.4	2.7	2013	1 701 958	12 477	1 006	78	83
Somalia	46	45	47	35	0.5	2.4	2013	10 470	12 903	10 278	46	42
South Africa	52	49	54	6 836	18.9	138.4	2013	8 645	306 166	66	70	70
South Sudan	48	48	49	193	2.7	12.7	2013	262 520	8 335	441	22	39
Sudan	53	52	54	53	0.2	2.9	2013	592 383	19 266	676	86	94
Swaziland	45	45	45	214	27.7	3.5	2013	402	5 583	0	86	98
Tanzania	53	52	55	1 499	5.3	46.1	2013	1 552 444	61 571	88	99	97
Togo	50	49	51	114	2.4	4.3	2013	882 430	2 525	577	82	87
Tunisia	66	65	68	3	0.1	0.1	...	...	3 134	15	98	98
Uganda	50	49	52	1 487	7.3	32.9	2013	1 502 362	44 187	314	82	78
Zambia	50	49	51	1 150	12.4	18.9	...	...	37 931	9	85	86
Zimbabwe	50	48	52	1 550	16.7	38.6	2013	422 633	29 653	0	92	91
<b>AFRICA</b>	<b>52</b>	<b>51</b>	<b>53</b>	<b>25 950</b>	<b>3.8</b>	<b>801.1</b>	2013	<b>45 368 192</b>	<b>1 376 548</b>	<b>86 579</b>	<b>75</b>	<b>79</b>

Notes: DTP: Diphtheria, tetanus toxoids and pertussis antigen. MCV: Measles Containing Vaccine.

Sources: UNAIDS and WHO, Global report, UNAIDS report on the global AIDS epidemic 2015; Malaria reported cases, tuberculosis new and relapse cases, measles incidence, MCV and DTP3 vaccination coverage: WHO, Global Health Observatory Data Repository online Database, February 2016.

Table 18. Basic education indicators

	Estimated adult literacy rate, 2010-15 (%)			Estimated youth literacy rate, 2010-15 (%)			Public expenditure on education 2000-13 (% of GDP)
	Total	Male	Female	Total	Male	Female	
Algeria	80.2	87.2	73.1	95.6	95.6	95.5	4.3
Angola	71.1	82.0	60.7	72.9	78.6	67.3	3.5
Benin	38.4	49.9	27.3	52.5	62.6	42.5	5.0
Botswana	88.5	88.0	88.9	97.9	96.1	99.6	9.5
Burkina Faso	36.0	43.0	29.3	45.4	47.6	43.2	4.3
Burundi	85.6	88.2	83.1	87.6	87.4	87.8	5.4
Cabo Verde	87.6	92.1	83.1	98.3	98.1	98.6	4.9
Cameroon	75.0	81.2	68.9	83.8	87.1	80.4	3.0
Central African Republic	36.8	50.7	24.4	36.4	48.9	27.0	1.2
Chad	40.2	48.5	31.9	52.7	55.3	50.2	2.3
Comoros	77.8	81.8	73.7	87.6	86.9	88.2	7.8
Congo	79.3	86.4	72.9	80.9	85.7	76.9	6.2
Congo, Dem. Rep.	77.3	88.9	66.0	86.0	91.6	80.5	1.5
Côte d'Ivoire	43.1	53.1	32.5	50.2	59.6	40.7	4.4
Djibouti	...	...	...	...	...	...	4.5
Egypt	75.2	83.2	67.3	93.3	94.5	92.1	3.8
Equatorial Guinea	95.3	97.4	93.0	98.3	97.7	98.8	0.7
Eritrea	73.8	82.4	65.5	93.2	94.5	91.9	2.1
Ethiopia	49.1	57.2	41.1	69.5	71.1	67.8	4.7
Gabon	83.2	85.3	81.0	89.1	87.8	90.5	3.8
Gambia	55.5	63.9	47.6	73.2	75.6	70.8	4.1
Ghana	76.6	82.0	71.4	90.6	91.3	89.9	8.1
Guinea	30.4	38.1	22.8	45.2	43.0	47.5	3.5
Guinea-Bissau	59.9	71.8	48.3	77.3	80.8	73.7	...
Kenya	78.0	81.1	74.9	85.9	85.2	86.6	5.5
Lesotho	79.4	70.1	88.3	85.1	77.0	93.4	13.0
Liberia	47.6	62.4	32.8	54.5	64.7	44.0	2.8
Libya	91.0	96.7	85.6	100.0	100.0	99.9	...
Madagascar	64.7	66.7	62.6	65.1	65.4	64.8	2.1
Malawi	65.8	73.0	58.6	75.1	74.9	75.2	7.7
Mali	38.7	48.2	29.2	54.1	61.5	46.4	4.2
Mauritania	52.1	62.6	41.6	62.6	70.0	55.0	4.0

Table 18. Basic education indicators (cont.)

	Estimated adult literacy rate, 2010-15 (%) (people over 15)			Estimated youth literacy rate, 2010-15 (%) (people between 15 and 24)			Public expenditure on education 2000-13  (% of GDP)
	Total	Male	Female	Total	Male	Female	
Mauritius	90.6	92.9	88.5	98.7	98.4	99.1	3.7
Morocco	72.4	82.7	62.5	95.1	96.6	93.5	6.3
Mozambique	58.8	73.3	45.4	76.7	83.7	69.7	6.6
Namibia	81.9	79.2	84.5	89.9	86.5	93.3	8.3
Niger	19.1	27.3	11.0	26.6	36.4	17.1	4.5
Nigeria	59.6	69.2	49.7	72.8	79.9	65.3	...
Rwanda	70.5	73.2	68.0	80.4	78.5	82.2	5.0
Sao Tome and Principe	74.9	81.8	68.4	83.2	84.0	82.3	9.5
Senegal	55.7	68.5	43.8	69.8	75.9	63.6	5.6
Seychelles	95.2	94.7	95.7	99.0	98.6	99.6	3.6
Sierra Leone	48.1	58.7	37.7	67.6	75.8	59.3	2.8
Somalia	...	...	...	...	...	...	...
South Africa	94.3	95.5	93.1	99.0	98.6	99.4	6.0
South Sudan	31.9	38.6	25.3	44.3	46.9	41.7	...
Sudan	75.9	83.3	68.6	89.6	91.3	87.8	2.2
Swaziland	87.5	87.4	87.5	94.8	93.5	96.0	7.8
Tanzania	80.3	84.8	75.9	87.3	87.4	87.2	3.5
Togo	66.5	78.3	55.3	85.1	88.9	81.4	4.4
Tunisia	81.8	89.6	74.2	98.1	98.3	97.8	6.2
Uganda	73.9	80.8	66.9	87.0	87.4	86.6	2.2
Zambia	63.4	70.9	56.0	65.8	69.4	62.1	1.1
Zimbabwe	86.5	88.5	84.6	91.7	90.0	93.5	2.0
<b>AFRICA</b>	<b>67.1</b>	<b>74.7</b>	<b>59.6</b>	<b>78.4</b>	<b>81.5</b>	<b>75.3</b>	<b>4.7</b>

Sources : AfDB Statistics Department; UNESCO Institute for Statistics (UIS), Database January 2016; domestic authorities.

Table 19. School enrolment

	Primary school, 2010-15						Secondary school, 2010-15						Enrolment ratio in technical and vocational programmes					
	Gross enrolment ratio (%)			Net enrolment ratio (%)			Pupil/teacher			Gross enrolment ratio (%)			Pupil/teacher			2006-08 (%)		
	Total	Male	Female	Total	Male	Female	Ratio (%)	Female	Male	Total	Male	Female	Ratio (%)	Female	Male	Total	Lower secondary	Upper secondary
Algeria	118.7	122.3	115.1	97.3	...	...	23.7	...	99.9	98.1	101.7	...	...	...	...	...	...	...
Angola	128.7	156.9	100.4	84.0	94.9	73.0	42.5	73.0	28.9	35.1	22.7	27.4	27.4	...	...	...	...	...
Benin	125.6	131.1	119.9	95.9	99.9	88.2	45.9	88.2	54.4	64.8	43.9	9.9	9.9	...	...	...	...	...
Botswana	108.6	110.1	107.0	91.0	90.4	91.6	22.6	91.6	83.9	81.6	86.2	11.2	11.2	...	...	...	...	19.1
Burkina Faso	86.9	88.7	85.1	67.5	69.2	65.7	44.5	65.7	30.3	32.4	28.2	27.1	27.1	6.0	1.9	23.8	...	...
Burundi	127.6	126.8	128.4	95.4	94.5	96.2	43.7	96.2	37.9	41.1	34.8	37.2	37.2	5.2	1.8	19.0	...	...
Cabo Verde	113.2	116.3	109.9	98.2	98.0	98.3	22.6	98.3	92.6	86.8	98.5	16.0	16.0	...	...	...	...	...
Cameroon	113.6	120.1	106.9	91.6	96.6	86.6	44.2	86.6	56.4	60.9	51.9	20.4	20.4	19.1	19.7	17.7	...	...
Central African Republic	93.5	107.3	79.8	70.6	79.1	62.1	80.1	62.1	17.4	23.0	11.8	68.1	68.1	...	...	...	...	...
Chad	101.4	114.6	88.0	84.4	94.7	74.0	62.4	74.0	22.4	30.7	14.0	29.8	29.8	1.1	0.1	4.2	...	...
Comoros	105.2	108.3	102.0	83.2	85.5	80.8	27.8	80.8	59.3	58.3	60.4	8.7	8.7	...	...	...	...	...
Congo	110.9	107.0	114.8	91.4	87.6	95.2	44.4	95.2	54.5	58.4	50.6	18.7	18.7	...	...	...	...	...
Congo, Dem. Rep.	107.0	112.0	101.8	...	...	...	35.3	...	43.5	53.6	33.3	14.6	14.6	19.2	1.9	34.1	...	...
Côte d'Ivoire	89.6	95.6	83.6	74.7	79.2	70.1	42.5	70.1	40.1	47.0	33.2	22.3	22.3	...	...	...	...	...
Djibouti	66.3	70.1	62.3	57.4	60.7	54.0	33.0	54.0	47.1	52.1	41.9	22.8	22.8	5.4	1.4	15.9	...	...
Egypt	105.5	106.0	105.1	99.9	99.5	97.1	23.2	97.1	86.0	86.8	85.3	...	...	...	...	...	...	...
Equatorial Guinea	84.5	85.2	83.7	56.8	56.8	56.8	26.2	56.8	...	...	...	...	...	...	...	...	...	...
Eritrea	51.2	55.2	47.1	40.6	42.7	38.4	40.3	38.4	35.5	39.3	31.6	38.5	38.5	0.7	...	1.9	...	...
Ethiopia	100.1	104.3	95.8	85.8	88.7	82.9	64.3	82.9	36.2	37.9	34.5	38.8	38.8	6.2	...	54.2	...	...
Gabon	142.0	144.0	139.9	...	...	...	24.5	...	...	...	...	...	...	...	...	...	...	...
Gambia	85.8	83.5	88.0	67.9	65.3	70.6	36.8	70.6	57.5	58.9	56.0	...	...	...	...	...	...	...
Ghana	109.9	109.9	109.9	91.1	90.9	91.3	31.3	91.3	71.0	72.9	69.1	16.6	16.6	4.0	...	13.5	...	...
Guinea	89.4	94.8	83.8	74.0	77.8	70.1	44.6	70.1	38.8	46.8	30.7	33.1	33.1	2.1	0.2	6.9	...	...
Guinea-Bissau	113.7	117.5	109.8	68.2	69.8	66.7	51.9	66.7	...	...	...	...	...	1.8	...	...	...	...
Kenya	111.4	111.2	111.6	84.9	83.2	86.6	56.6	86.6	67.6	70.1	65.2	41.1	41.1	1.0	...	2.1	...	...
Lesotho	107.1	108.3	105.8	80.2	78.7	81.8	32.8	81.8	52.2	44.1	60.4	24.7	24.7	1.6	3.8	3.3	...	...
Liberia	95.6	99.5	91.6	37.7	38.6	36.7	26.5	36.7	37.9	42.5	33.1	14.9	14.9	...	...	...	...	...
Libya	...	...	...	...	...	...	...	...	...	...	...	...	...	...	...	...	...	...
Madagascar	146.7	146.9	146.5	...	...	...	41.7	...	38.4	38.8	38.1	23.1	23.1	3.5	0.9	14.5	...	...
Malawi	146.5	145.1	148.0	...	...	...	61.4	...	39.5	41.4	37.5	70.4	70.4	...	...	...	...	...



Table 19. School enrolment (cont.)

	Primary school, 2010-15						Secondary school, 2010-15						Enrolment ratio in technical and vocational programmes						
	Gross enrolment ratio (%)			Net enrolment ratio (%)			Pupil / teacher Ratio (%)			Gross enrolment ratio (%)			Pupil / teacher Ratio (%)			2006-08 (%)			
	Total	Male	Female	Total	Male	Female	Total	Male	Female	Total	Male	Female	Total	Male	Female	Total secondary	Lower secondary	Upper secondary	
Mali	77.2	81.2	73.0	59.4	62.5	56.2	42.5	49.4	37.4	43.5	49.4	37.4	18.9	18.9	12.3	...	...	39.6	
Mauritania	98.0	95.3	100.7	74.4	72.7	76.2	34.4	31.2	28.6	29.9	31.2	28.6	...	...	3.2	1.6	5.4	5.4	
Mauritius	102.7	101.7	103.7	96.2	95.1	97.3	18.7	96.9	99.0	97.9	96.9	99.0	15.2	15.2	...	13.6	...	...	
Morocco	116.1	118.7	113.4	98.4	98.6	98.3	25.7	74.4	63.5	69.1	74.4	63.5	...	...	5.6	2.1	5.2	5.2	
Mozambique	104.1	108.6	99.6	87.6	89.7	85.4	54.5	25.5	23.5	24.5	25.5	23.5	31.2	31.2	5.8	5.5	7.4	7.4	
Namibia	111.4	113.3	109.5	89.7	88.5	91.0	29.8	...	...	...	...	...	...	...	...	...	...	...	
Niger	70.6	75.9	65.0	61.0	65.6	56.2	35.8	22.1	15.6	18.8	22.1	15.6	25.1	25.1	1.0	0.7	3.5	3.5	
Nigeria	84.7	88.3	80.9	63.8	69.3	58.1	37.6	46.4	41.2	43.8	46.4	41.2	33.1	33.1	4.3	4.1	4.5	4.5	
Rwanda	137.7	136.2	139.2	96.1	94.8	97.4	59.8	38.7	41.6	40.2	38.7	41.6	22.8	22.8	16.2	...	44.8	44.8	
Sao Tome and Principe	113.6	116.1	111.1	94.9	96.2	93.6	38.8	80.7	89.3	84.9	80.7	89.3	20.8	20.8	1.6	...	10.9	10.9	
Senegal	80.9	77.5	84.3	71.1	68.2	74.1	31.6	41.9	38.2	40.1	41.9	38.2	27.4	27.4	5.9	6.1	4.9	4.9	
Seychelles	104.1	103.6	104.7	94.7	94.1	95.3	12.6	73.9	75.3	74.6	73.9	75.3	12.5	12.5	...	...	...	...	
Sierra Leone	130.0	130.3	129.8	97.9	98.6	97.3	34.8	46.9	40.0	43.4	46.9	40.0	20.7	20.7	4.9	1.2	16.0	16.0	
Somalia	...	...	...	...	...	...	...	...	...	...	...	...	...	...	...	...	...	...	...
South Africa	99.7	102.2	97.3	...	...	...	32.0	87.6	110.7	98.2	87.6	110.7	...	...	...	...	...	...	
South Sudan	84.2	101.1	67.0	40.6	47.3	33.7	49.9	...	...	...	...	...	...	...	...	...	...	...	
Sudan	69.1	73.0	65.1	53.8	52.4	55.1	46.1	42.0	38.4	40.2	42.0	38.4	31.1	31.1	1.9	...	4.5	4.5	
Swaziland	113.3	118.2	108.3	78.5	78.8	78.3	28.1	63.6	62.4	63.0	63.6	62.4	16.0	16.0	...	...	...	...	
Tanzania	86.8	86.2	87.4	80.9	80.6	81.2	43.4	33.7	30.8	32.3	33.7	30.8	26.4	26.4	...	...	...	...	
Togo	125.1	128.8	121.4	91.2	94.3	88.0	41.1	...	...	54.7	...	...	26.2	26.2	7.8	1.4	25.0	25.0	
Tunisia	111.3	113.0	109.5	98.6	...	...	17.4	90.0	94.2	90.1	90.0	94.2	13.6	13.6	9.5	1.0	8.5	8.5	
Uganda	109.9	108.9	110.9	93.7	92.2	95.1	45.6	29.5	25.7	27.6	29.5	25.7	21.3	21.3	5.0	1.8	20.9	20.9	
Zambia	103.7	103.3	104.0	87.4	86.5	88.3	47.9	...	...	...	...	...	...	...	7.9	...	19.6	19.6	
Zimbabwe	102.4	103.2	101.7	88.7	88.0	89.5	35.9	47.4	45.9	46.7	47.4	45.9	22.4	22.4	...	...	...	...	
<b>AFRICA</b>	<b>100.6</b>	<b>104.0</b>	<b>95.8</b>	<b>79.5</b>	<b>80.9</b>	<b>80.9</b>	<b>41.3</b>	<b>51.1</b>	<b>48.6</b>	<b>51.1</b>	<b>53.4</b>	<b>48.6</b>	<b>24.4</b>	<b>24.4</b>	<b>...</b>	<b>...</b>	<b>...</b>	<b>...</b>	

Sources: AfDB Statistics Department; UNESCO Institute for Statistics (UIS) Database, January 2016; various domestic authorities.

Table 20. Employment and remittances

Unemployment rate*				Participation rate*		Inactivity rate* (age 15-64)					Worker remittances (USD million)					
ILO's latest estimates (a)				2013		2013					2011	2012	2013	2014	2015 (e)	
Year	Total	Male	Female	Total (age 15+)	Total among youth (age 15-24)	Total	Male	Female	Total	Male	Female	2011	2012	2013	2014	2015 (e)
Algeria	2013 (b)	9.8	8.3	16.3	43.6	28.2	53	25	82	1 942	1 942	2 000	2 000	2 000	2 000	2 000
Angola	2013	7.6	7.0	8.4	68.3	51.6	31	22	39	11.2	11.1	11.1	11.1	11.1	11.1	11
Benin	2013	1.0	0.9	1.2	71.6	41.7	28	26	29	172	208	208	208	208	208	208
Botswana	2013	17.4	14.4	20.6	77.1	57.6	21	18	24	20	18	36	42	42	42	43
Burkina Faso	2013	3.2	4.1	2.3	83.6	77.8	15	9	21	120	120	120	120	120	120	120
Burundi	2013	1.6	1.2	1.9	83.4	65.6	16	17	15	45	46	49	49	49	49	50
Cabo Verde	2013	10.5	9.1	12.5	67.6	59.9	29	14	44	177	178	176	189	189	194	194
Cameroon	2013	4.0	3.4	4.8	75.9	56.4	23	18	28	219	210	244	244	244	244	244
Central African Republic	2013	8.4	8.0	8.8	77.9	60.1	22	15	28	...	...	...	...	...	...	...
Chad	2013	5.6	4.6	6.8	71.6	56.4	28	21	35	...	...	...	...	...	...	...
Comoros	2013	19.1	17.4	23.2	57.1	39.3	42	20	64	108	110	116	126	126	134	134
Congo	2013	7.3	6.6	8.0	69.9	44.8	29	26	31	...	...	...	...	...	...	...
Congo, Dem. Rep.	2013	3.8	3.1	4.5	71.2	44.4	28	28	29	115	12	33	22	22	23	23
Côte d'Ivoire	2013	9.4	8.5	10.9	67.0	50.9	32	18	47	373	373	373	373	373	373	373
Djibouti	...	...	...	...	52.0	42.8	45	29	61	32	33	36	36	36	36	36
Egypt	2013 (b)	13.2	9.6	25.3	49.2	33.4	48	20	75	14 324	19 236	17 833	19 570	20 391	20 391	20 391
Equatorial Guinea	2013	7.8	7.3	8.5	82.0	71.4	16	6	28	...	...	...	...	...	...	...
Eritrea	2013	8.0	7.3	8.8	83.8	77.2	15	9	20	...	...	...	...	...	...	...
Ethiopia	2013 (b)	5.0	3.0	7.2	83.1	78.1	15	9	20	513	624	624	624	624	624	635
Gabon	2013	20.3	14.5	28.9	48.2	18.3	49	41	59	...	...	...	...	...	...	...
Gambia	2013	29.8	21.8	38.6	77.4	63.8	22	17	27	108	141	181	181	181	181	181
Ghana	2013 (b)	5.2	5.0	5.4	76.8	55.0	22	21	23	152	138	119	119	119	119	119
Guinea	2013	1.7	2.4	0.8	82.3	72.6	16	14	18	65	66	93	93	93	93	93
Guinea-Bissau	2013	7.6	6.9	8.3	72.5	52.9	26	21	32	52	46	46	46	46	46	46
Kenya	2013	9.1	7.9	10.5	66.8	39.7	33	28	38	934	1 211	1 304	1 441	1 571	1 571	1 571
Lesotho	2013 (b)	24.4	22.4	26.9	66.0	45.3	33	25	40	649	554	462	399	405	405	405
Liberia	2013	3.7	3.5	3.8	60.9	34.4	38	36	41	360	516	383	466	568	568	568
Libya	2013	20.6	17.1	30.3	53.8	36.2	44	18	70	...	...	...	...	...	...	...
Madagascar	2013	1.3	1.0	1.6	86.6	76.7	12	10	14	398	397	427	427	427	427	427
Malawi	2013 (b)	6.4	6.1	6.7	80.9	59.3	20	20	19	25	28	28	28	28	28	29
Mali	2013 (b)	7.3	5.5	10.2	66.1	58.8	33	17	49	784	827	895	895	895	895	895

Table 20. Employment and remittances (cont.)

Unemployment rate*			Participation rate*		Inactivity rate* (age 15-64)			Worker remittances (USD million)					
ILO's latest estimates (a)			2013		2013			2011	2012	2013	2014	2015 (e)	
Year	Total	Male	Female	Total (age 15+)	Total among youth (age 15-24)	Total	Male	Female					
Mauritania	2013	30.8	28.8	35.3	47.1	26.9	34	70	..	..	..	..	..
Mauritius	2013 (b)	7.6	5.0	11.7	59.9	41.7	20	49	249	249	249	249	249
Morocco	2013 (b)	9.2	9.1	9.5	49.0	34.6	22	74	7 256	6 508	6 882	7 053	6 680
Mozambique	2013	22.6	20.6	24.2	79.2	71.3	20	16	157	220	217	118	118
Namibia	2013 (b)	29.6	26.3	33.1	58.7	31.1	40	44	15	13	11	11	12
Niger	2013	2.4	2.7	1.8	64.7	57.3	34	9	166	152	152	152	152
Nigeria	2013 (b)	7.1	6.4	8.0	56.1	37.6	44	52	20 619	20 633	20 890	20 921	20 865
Rwanda	2013	3.4	3.2	3.7	85.1	71.3	13	11	174	182	170	170	172
Sao Tome and Principe	2013	13.6	12.0	16.2	60.3	38.5	37	53	7	6	27	29	29
Senegal	2013	10.3	8.0	13.6	56.8	41.7	41	54	1 614	1 614	1 614	1 614	1 614
Seychelles	...	...	...	...	...	...	...	...	25	18	13	15	15
Sierra Leone	2013	3.2	4.3	2.2	66.6	44.1	32	33	59	61	68	68	72
Somalia	2013	7.6	7.1	8.6	54.1	43.4	44	66	...	...	...	...	...
South Africa	2013 (b)	24.6	23.1	26.4	52.5	26.1	44	50	1 158	1 085	971	913	1 003
South Sudan	...	...	...	...	73.2	63.2	25	27	...	...	...	...	...
Sudan	2013	13.0	10.9	19.2	48.0	29.6	51	75	442	401	424	343	348
Swaziland	2013	27.1	25.7	29.2	51.0	33.9	47	58	38	31	30	30	30
Tanzania	2013 (b)	2.9	2.0	3.9	78.6	65.0	20	25	78	67	59	59	61
Togo	2013	7.7	7.0	8.4	80.8	65.1	18	17	244	345	345	345	345
Tunisia	2013 (b)	15.9	13.6	22.2	47.8	35.1	48	72	2 004	2 266	2 291	2 291	2 291
Uganda	2013	4.3	3.8	4.9	85.0	75.9	14	16	816	914	935	1 029	1 053
Zambia	2013	7.8	7.5	8.2	75.3	57.5	24	29	46	73	54	58	59
Zimbabwe	2013	12.4	10.6	14.2	82.4	71.9	17	22	..	..	..	..	..
<b>AFRICA</b>	<b>2013</b>	<b>8.3</b>	<b>7.3</b>	<b>9.6</b>	<b>65.1</b>	<b>50.1</b>	...	...	<b>56 870</b>	<b>61 887</b>	<b>61 199</b>	<b>63 178</b>	<b>63 962</b>

Note: \* See note on methodology for definitions. (e) Estimates.

Sources: Employment: ILO, KILM database, ninth edition; Trends Estimation Model: (a) Harmonised estimates for 2013. (b) Data as reported by domestic authorities. Workers' remittances: World Bank, World Development Indicators, Remittances data (updated as of October 2015).

Table 21. Corruption Perceptions Index (CPI)\*

	2009		2010		2011		2012		2013		2014		2015	
	Index	Country rank / 180	Index	Country rank / 178	Index	Country rank / 182	Index	Country rank / 174	Index	Country rank / 175	Index	Country rank / 174	Index	Country rank / 167
Algeria	2.8	111	2.9	105	2.9	112	3.4	105	3.6	94	3.6	100	3.6	88
Angola	1.9	162	1.9	168	2.0	168	2.2	157	2.3	153	1.9	161	1.5	163
Benin	2.9	106	2.8	110	3.0	100	3.6	94	3.6	94	3.9	80	3.7	83
Botswana	5.6	37	5.8	33	6.1	32	6.5	30	6.4	30	6.3	31	6.3	28
Burkina Faso	3.6	79	3.1	98	3.0	100	3.8	83	3.8	83	3.8	85	3.8	76
Burundi	1.8	168	1.8	170	1.9	172	1.9	165	2.1	157	2.0	159	2.1	150
Cabo Verde	5.1	46	5.1	45	5.5	41	6.0	39	5.8	41	5.7	42	5.5	40
Cameroun	2.2	146	2.2	146	2.5	134	2.6	144	2.5	144	2.7	136	2.7	130
Central African Republic	2.0	158	2.1	154	2.2	154	2.6	144	2.5	144	2.4	150	2.4	145
Chad	1.6	175	1.7	171	2.0	168	1.9	165	1.9	163	2.2	154	2.2	147
Comoros	2.3	143	2.1	154	2.4	143	2.8	133	2.8	127	2.6	142	2.6	136
Congo	1.9	162	2.1	154	2.2	154	2.6	144	2.2	154	2.3	152	2.3	146
Congo, Dem. Rep.	1.9	162	2.2	146	2.0	168	2.1	160	2.2	154	2.2	154	2.2	147
Côte d'Ivoire	2.1	154	2	164	2.2	154	2.9	130	2.7	136	3.2	115	3.2	107
Djibouti	2.8	111	3.2	91	3.0	100	3.6	94	3.6	94	3.4	107	3.4	99
Egypt	2.8	111	3.1	98	2.9	112	3.2	118	3.2	114	3.7	94	3.6	88
Equatorial Guinea	1.8	168	1.9	168	1.9	172	2.0	163	1.9	163	...	...	...	...
Eritrea	2.6	126	2.6	123	2.5	134	2.5	150	2.0	160	1.8	166	1.8	154
Ethiopia	2.7	120	2.7	116	2.7	120	3.3	113	3.3	111	3.3	110	3.3	103
Gabon	2.9	106	2.8	110	3.0	100	3.5	102	3.4	106	3.7	94	3.4	99
Gambia	2.9	106	3.2	91	3.5	75	3.4	105	2.8	127	2.9	126	2.8	123
Ghana	3.9	69	4.1	62	3.9	69	4.5	64	4.6	63	4.8	61	4.7	56
Guinea	1.8	168	2	164	2.1	164	2.4	154	2.4	150	2.5	145	2.5	139
Guinea-Bissau	1.9	162	2.1	154	2.2	154	2.5	150	1.9	163	1.9	161	1.7	158
Kenya	2.2	146	2.1	154	2.2	154	2.7	139	2.7	136	2.5	145	2.5	139
Lesotho	3.3	89	3.5	78	3.5	75	4.5	64	4.9	55	4.9	55	4.4	61
Liberia	3.1	97	3.3	87	3.2	91	4.1	75	3.8	83	3.7	94	3.7	83
Libya	2.5	130	2.2	146	2.0	168	2.1	160	1.5	172	1.8	166	1.6	161
Madagascar	3.0	99	2.6	123	3.0	100	3.2	118	2.8	127	2.8	133	2.8	123
Malawi	3.3	89	3.4	85	3.0	100	3.7	88	3.7	91	3.3	110	3.1	112
Mali	2.8	111	2.7	116	2.8	118	3.4	105	2.8	127	3.2	115	3.5	95
Mauritania	2.5	130	2.3	143	2.4	143	3.1	123	3.0	119	3.0	124	3.1	112

Table 21. Corruption Perceptions Index (CPI)\* (cont.)

	2009		2010		2011		2012		2013		2014		2015	
	Index	Country rank / 180	Index	Country rank / 178	Index	Country rank / 182	Index	Country rank / 174	Index	Country rank / 175	Index	Country rank / 174	Index	Country rank / 167
Mauritius	5.4	42	5.4	39	5.1	46	5.7	43	5.2	52	5.4	47	5.3	45
Morocco	3.3	89	3.4	85	3.4	80	3.7	88	3.7	91	3.9	80	3.6	88
Mozambique	2.5	130	2.7	116	2.7	120	3.1	123	3.0	119	3.1	119	3.1	112
Namibia	4.5	56	4.4	56	4.4	57	4.8	58	4.8	57	4.9	55	5.3	45
Niger	2.9	106	2.6	123	2.5	134	3.3	113	3.4	106	3.5	103	3.4	99
Nigeria	2.5	130	2.4	134	2.4	143	2.7	139	2.5	144	2.7	136	2.6	136
Rwanda	3.3	89	4	66	5.0	49	5.3	50	5.3	49	4.9	55	5.4	44
Sao Tome and Principe	2.8	111	3	101	3.0	100	4.2	72	4.2	72	4.2	76	4.2	66
Senegal	3.0	99	2.9	105	2.9	112	3.6	94	4.1	77	4.3	69	4.4	61
Seychelles	4.8	54	4.8	49	4.8	50	5.2	51	5.4	47	5.5	43	5.5	40
Sierra Leone	2.2	146	2.4	134	2.5	134	3.1	123	3.0	119	3.1	119	2.9	119
Somalia	1.1	180	1.1	178	1.0	182	0.8	174	0.8	175	0.8	174	0.8	167
South Africa	4.7	55	4.5	54	4.1	64	4.3	69	4.2	72	4.4	67	4.4	61
South Sudan	...	...	...	...	...	...	...	...	1.1	174	1.5	171	1.5	163
Sudan	1.5	176	1.6	172	1.6	177	1.3	173	1.4	173	1.1	173	1.2	165
Swaziland	3.6	79	3.2	91	3.1	95	3.7	88	3.9	82	4.3	69	...	...
Tanzania	2.6	126	2.7	116	3.0	100	3.5	102	3.3	111	3.1	119	3.0	117
Togo	2.8	111	2.4	134	2.4	143	3.0	128	2.9	123	2.9	126	3.2	107
Tunisia	4.2	65	4.3	59	3.8	73	4.1	75	4.1	77	4.0	79	3.8	76
Uganda	2.5	130	2.5	127	2.4	143	2.9	130	2.6	140	2.6	142	2.5	139
Zambia	3.0	99	3	101	3.2	91	3.7	88	3.8	83	3.8	85	3.8	76
Zimbabwe	2.2	146	2.4	134	2.2	154	2.0	163	2.1	157	2.1	156	2.1	150

Note: \* CPI score relates to perceptions of the degree of corruption as seen by business people and country analysts, and ranges between 10 (highly clean) and 0 (highly corrupt).

Source: Transparency International: [www.transparency.org](http://www.transparency.org)

Table 22. Public protest

	1997	1998	1999	2000	2001	2002	2003	2004	2005	2006	2007	2008	2009	2010	2011	2012	2013	2014	2015
Algeria	2.3	6.7	1.4	...	9.9	10.0	6.6	1.3	0.7	4.0	1.5	2.5	1.8	9.0	23.3	5.0	11.0	8.5	3.0
Angola	...	...	...	...	...	...	...	1.5	0.0	1.0	0.0	0.0	0.3	0.0	2.5	1.8	1.5	0.3	2.3
Benin	0.8	0.0	0.8	0.0	0.0	0.5	0.0	1.5	0.0	0.5	0.0	0.0	0.0	0.0	0.8	0.0	0.0	8.3	0.3
Botswana	0.0	0.0	0.0	0.0	0.0	0.0	0.0	0.0	0.0	0.0	0.0	0.0	0.0	0.3	6.0	0.0	0.0	0.0	0.0
Burkina Faso	1.5	0.8	3.2	9.4	0.5	1.1	0.0	1.6	0.9	3.8	0.5	2.5	4.3	0.8	9.8	2.8	2.8	6.5	5.5
Burundi	...	...	...	...	...	...	...	...	...	2.3	11.8	0.0	4.8	3.8	5.3	0.3	1.0	1.3	5.5
Cabo Verde	0.0	0.0	0.0	0.0	0.0	0.0	0.0	0.0	0.0	0.0	0.0	0.0	0.0	0.5	0.0	0.0	0.0	0.0	0.0
Cameroon	4.4	0.3	2.2	0.3	0.0	1.5	2.0	1.0	2.7	4.5	2.8	1.0	4.0	6.8	1.0	0.8	0.3	0.3	1.0
Central African Republic	...	...	...	...	...	...	...	...	...	12.8	3.5	1.8	1.8	3.3	1.5	1.3	2.5	4.5	2.8
Chad	3.0	0.7	0.5	0.0	2.2	0.0	1.5	0.0	1.6	1.3	5.3	1.0	2.5	0.5	2.3	4.0	0.3	0.5	2.5
Comoros	...	...	...	...	...	...	...	...	...	0.5	1.0	1.8	1.8	0.0	0.5	1.3	0.3	1.5	2.3
Congo	...	...	...	...	...	...	...	1.5	0.0	0.3	0.0	0.0	0.8	0.0	0.0	0.5	1.0	0.0	3.3
Congo, Dem. Rep.	...	...	...	...	...	...	...	2.0	2.8	7.3	4.8	1.8	6.0	1.8	2.3	3.3	1.5	7.0	5.5
Côte d'Ivoire	8.2	6.7	10.0	6.7	0.0	2.9	0.8	2.4	1.1	12.8	6.8	4.9	7.2	3.0	1.8	1.3	2.3	1.0	2.3
Djibouti	...	...	...	...	...	...	...	...	...	0.0	0.8	0.0	0.0	0.0	0.8	0.0	1.0	0.0	0.3
Egypt	4.2	0.0	0.0	1.6	3.2	2.6	1.3	3.1	2.3	4.1	5.8	4.6	3.0	3.5	16.5	20.8	19.8	7.0	1.3
Equatorial Guinea	0.0	0.0	0.0	0.0	0.0	0.0	0.0	0.0	0.0	0.0	0.0	0.0	0.0	1.0	0.5	0.0	0.3	0.0	0.0
Eritrea	...	...	...	...	...	...	...	...	...	...	...	...	...	...	0.0	0.0	0.3	0.0	0.0
Ethiopia	1.2	0.8	0.0	0.0	1.3	0.3	0.0	0.0	2.3	0.6	0.3	0.0	0.3	0.0	0.0	0.8	1.8	0.5	1.3
Gabon	0.0	2.1	1.3	0.0	0.0	1.3	0.0	0.5	5.0	6.1	1.5	0.9	4.5	7.5	3.0	9.0	6.8	30.3	5.8
Gambia	...	...	...	...	...	...	...	...	...	0.0	0.0	0.0	0.0	0.0	0.0	0.0	0.3	0.0	0.0
Ghana	0.0	0.3	2.0	0.0	0.0	0.0	0.5	0.0	0.0	0.0	0.0	0.5	0.0	0.0	0.3	0.3	0.5	0.5	2.0
Guinea	...	...	...	...	...	...	...	...	...	3.8	11.8	0.8	3.5	3.0	3.5	4.0	6.8	1.8	5.0
Guinea-Bissau	1.8	0.0	2.0	0.8	0.3	3.3	0.0	1.3	1.5	4.0	1.8	0.5	0.0	0.8	4.3	0.8	4.3	0.3	0.3
Kenya	4.4	8.1	0.0	0.0	0.5	0.0	0.9	2.4	2.2	2.5	1.0	5.1	1.4	0.5	3.0	4.5	4.5	3.5	4.0
Lesotho	...	...	...	...	...	...	...	...	...	0.0	0.8	0.0	0.0	0.0	0.0	0.0	0.0	0.0	0.0
Liberia	...	...	...	...	...	...	...	...	...	3.3	0.3	0.0	0.3	0.0	0.5	0.0	1.8	1.8	0.3
Libya	0.0	0.0	0.0	0.5	0.0	0.0	0.0	0.5	0.5	0.3	0.0	0.0	0.0	0.0	5.0	7.5	28.0	13.5	7.0
Madagascar	0.0	0.3	0.0	0.0	0.0	12.8	0.0	1.0	3.3	0.8	1.0	0.0	8.3	0.8	0.5	6.5	1.3	1.0	2.5
Malawi	1.3	1.5	0.0	0.0	0.8	0.8	1.0	0.3	0.8	0.3	0.8	0.0	0.0	0.5	0.5	0.8	3.3	0.5	0.0
Mali	3.9	1.2	0.9	0.0	0.0	0.0	0.7	0.5	0.4	0.5	2.1	0.0	1.4	0.8	1.0	7.0	1.5	1.3	2.0
Mauritania	...	...	...	...	...	...	...	...	...	1.8	0.5	5.3	2.3	0.3	10.8	11.8	3.5	1.5	6.5
Mauritius	0.0	0.0	0.8	0.0	0.0	0.0	0.0	0.0	0.0	0.0	0.3	0.0	0.0	0.0	0.5	0.0	0.0	0.5	0.0
Morocco	1.6	1.4	0.7	0.7	0.0	0.0	0.0	1.2	0.5	2.0	3.9	2.7	2.2	1.0	10.0	9.5	7.0	9.5	2.8

Table 22. Public protest (cont.)

	1997	1998	1999	2000	2001	2002	2003	2004	2005	2006	2007	2008	2009	2010	2011	2012	2013	2014	2015
Mozambique	0.0	0.0	1.5	0.5	0.0	0.0	0.8	0.0	0.0	0.0	0.0	0.5	0.8	0.5	0.5	0.5	7.0	1.0	0.3
Namibia	0.0	0.0	0.0	0.0	0.0	0.0	0.0	0.0	0.0	0.0	0.0	0.0	0.0	0.3	0.8	0.0	0.0	0.3	0.0
Niger	...	...	...	...	...	...	...	1.3	1.5	6.0	1.8	1.0	7.3	0.0	1.0	0.5	4.0	3.8	7.8
Nigeria	2.3	2.8	6.3	4.1	5.3	1.0	0.8	2.9	0.5	3.2	2.3	2.8	3.6	3.8	2.8	4.8	6.8	11.0	3.0
Rwanda	...	...	...	...	...	...	...	0.0	0.0	0.0	0.0	0.8	0.0	0.0	0.0	0.0	0.3	0.0	0.3
Sao Tome and Principe	...	...	...	...	...	...	...	...	...	0.8	2.3	0.0	0.5	0.0	0.3	0.0	0.0	0.0	0.0
Senegal	5.0	1.9	1.1	0.0	1.4	0.0	0.0	1.3	2.2	5.4	4.5	2.5	2.9	2.5	5.0	11.0	1.3	1.8	5.3
Seychelles	...	...	...	...	...	...	...	...	...	0.3	0.0	0.0	0.0	0.0	0.0	0.0	0.0	0.0	0.0
Sierra Leone	...	...	...	...	...	...	...	...	...	0.5	1.3	0.3	0.0	0.3	0.5	1.0	0.5	2.3	0.5
Somalia	...	...	...	...	...	...	...	...	...	...	...	...	...	...	...	...	...	0.3	0.3
South Africa	10.3	2.0	5.6	1.9	1.5	1.0	0.6	3.0	1.0	3.6	7.5	2.3	8.8	6.3	7.8	22.3	31.8	39.5	14.0
South Sudan	...	...	...	...	...	...	...	...	...	...	...	...	...	...	0.3	0.3	0.0	0.0	0.0
Sudan	...	...	...	...	...	...	...	...	...	2.0	0.5	1.0	1.3	1.3	6.0	7.3	4.5	1.5	1.0
Swaziland	...	...	...	...	...	...	...	...	...	0.0	1.8	0.0	0.0	0.0	2.5	2.0	0.0	0.3	0.0
Tanzania	0.0	0.8	0.0	0.0	1.0	0.0	0.3	0.3	0.3	0.0	0.0	0.3	0.0	0.3	0.8	1.8	1.3	0.8	0.3
Togo	0.5	0.8	0.3	1.8	1.3	0.3	0.5	0.0	6.3	0.0	0.3	0.0	0.5	1.8	3.0	3.5	4.0	2.5	2.8
Tunisia	0.0	0.3	0.7	0.7	0.0	0.0	2.8	0.0	1.3	5.6	1.9	1.7	3.4	0.8	19.3	30.5	18.8	10.5	9.0
Uganda	0.0	0.0	0.0	0.0	0.0	0.0	0.0	1.0	1.0	0.3	1.3	0.0	0.5	0.0	4.3	1.3	0.8	1.3	0.0
Zambia	1.5	2.1	1.5	0.5	5.0	0.5	3.4	1.8	0.9	6.6	2.4	1.5	1.6	0.3	2.0	1.0	1.5	0.3	1.3
Zimbabwe	3.7	4.8	4.6	1.3	1.4	1.0	5.9	0.3	1.0	2.0	6.9	2.7	4.4	3.5	5.0	0.8	0.3	0.3	2.0

Note: The change in the source might affect the comparability of the 2006 indicator to its historical values. The indicators presented in the tables have been adjusted accordingly. For more details about the sources and computation, see note on methodology.

Sources: Authors' calculations based on news verified by the press agencies (*Marchés Tropicaux et Méditerranéens* for 1996-2005, AFP and Reuters for 2006 onwards).

Table 23. Violence by non-state actors

	1997	1998	1999	2000	2001	2002	2003	2004	2005	2006	2007	2008	2009	2010	2011	2012	2013	2014	2015
Algeria	31.3	37.6	43.0	37.8	35.0	15.4	5.5	19.2	10.7	12.8	14.8	10.8	11.0	5.8	15.3	6.3	6.3	5.5	2.3
Angola	...	...	...	...	...	...	...	13.5	0.8	0.3	0.0	0.3	0.5	1.3	1.3	1.3	0.5	0.0	0.8
Benin	0.0	0.0	0.8	0.0	0.0	0.5	0.0	0.3	0.0	0.3	0.0	0.0	0.8	0.0	1.0	0.5	0.0	0.0	0.0
Botswana	0.0	0.0	0.0	0.0	0.0	0.0	0.0	0.0	0.0	0.0	0.0	0.0	0.0	0.0	0.0	0.0	0.0	0.0	0.0
Burkina Faso	0.0	0.0	0.3	0.0	0.5	0.5	0.0	0.5	0.0	0.0	0.0	0.3	0.0	0.0	6.0	2.3	1.0	0.0	4.0
Burundi	...	...	...	...	...	...	...	...	...	6.3	2.8	2.3	4.3	3.0	6.0	2.3	1.8	1.3	9.5
Cabo Verde	0.0	0.0	0.0	0.0	0.0	0.0	0.0	0.0	0.0	0.0	0.0	0.0	0.0	0.0	0.0	0.0	0.0	0.0	0.0
Cameroon	14.2	0.3	0.0	0.7	0.4	0.0	0.0	0.3	0.9	1.8	1.3	1.3	3.3	0.0	3.5	1.3	2.0	6.0	13.3
Central African Republic	...	...	...	...	...	...	...	...	...	6.0	2.8	2.5	7.3	9.0	4.5	8.3	18.5	20.8	10.5
Chad	2.4	1.3	6.4	7.7	4.7	3.0	4.5	1.0	3.2	13.8	8.3	3.4	3.0	1.3	1.3	0.5	0.5	0.5	7.5
Comoros	...	...	...	...	...	...	...	...	...	0.0	1.5	0.8	0.0	0.0	0.5	0.0	0.0	0.3	0.0
Congo	...	...	...	...	...	...	...	0.0	0.5	0.0	0.5	0.0	1.0	0.0	0.0	1.0	0.3	0.5	1.0
Congo, Dem. Rep.	...	...	...	...	...	...	...	4.5	4.5	12.0	17.3	10.3	18.8	11.5	4.8	12.0	13.8	11.0	12.5
Côte d'Ivoire	0.0	0.0	1.7	6.2	1.2	3.1	4.7	6.0	5.7	7.0	1.3	1.0	1.0	2.5	10.8	7.3	2.8	2.3	2.5
Djibouti	...	...	...	...	...	...	...	...	...	0.0	0.0	0.8	0.5	0.0	0.5	0.0	0.3	1.0	0.0
Egypt	10.8	0.0	0.5	2.0	1.0	0.0	1.2	1.3	2.3	3.5	2.0	4.3	4.1	1.3	12.3	16.8	29.0	21.3	19.8
Equatorial Guinea	0.0	0.5	0.0	0.0	0.0	0.0	0.3	0.3	0.0	0.0	0.0	0.0	0.8	0.0	0.0	0.0	0.3	0.0	0.0
Eritrea	...	...	...	...	...	...	...	...	...	...	...	...	...	...	1.5	0.0	0.0	0.0	0.0
Ethiopia	4.1	0.0	7.2	2.0	1.5	12.4	4.7	8.1	3.6	7.4	7.9	4.2	5.0	2.0	1.8	2.8	0.8	0.8	0.8
Gabon	0.3	0.0	0.0	0.0	0.0	0.0	0.0	0.0	0.3	0.0	0.0	0.0	0.8	0.0	0.5	2.5	0.0	0.3	0.5
Gambia	...	...	...	...	...	...	...	...	...	0.0	0.0	0.0	0.0	0.0	0.0	0.0	0.0	0.0	0.0
Ghana	0.0	0.0	0.5	0.5	1.0	1.0	0.0	0.5	0.0	0.0	0.5	0.5	0.0	0.0	0.0	1.0	0.3	0.0	0.0
Guinea	...	...	...	...	...	...	...	...	...	0.0	0.5	1.3	0.3	2.0	3.3	2.5	8.0	1.3	1.8
Guinea-Bissau	0.0	5.0	3.8	1.0	0.8	0.3	1.0	1.0	0.5	1.5	0.3	0.0	0.3	0.0	0.5	0.5	0.5	0.0	0.0
Kenya	5.3	6.5	0.0	0.0	2.8	0.5	1.5	0.5	2.3	8.3	6.3	8.3	4.8	0.8	3.3	17.8	13.5	13.0	7.5
Lesotho	...	...	...	...	...	...	...	...	...	0.3	0.3	0.0	0.0	0.0	0.0	0.0	0.0	0.8	0.8
Liberia	...	...	...	...	...	...	...	...	...	2.5	0.3	0.8	0.8	0.5	0.3	0.8	0.0	0.5	0.3
Libya	0.0	0.0	0.0	0.8	0.0	0.0	0.0	0.3	0.3	0.0	0.0	0.3	0.0	0.0	15.0	22.3	23.8	27.0	24.0
Madagascar	0.0	0.3	0.0	0.0	0.0	4.0	0.0	1.3	1.3	0.8	0.0	0.0	2.8	0.5	0.3	4.0	2.8	1.0	1.3
Malawi	2.5	2.0	0.3	0.0	0.0	0.3	1.0	0.3	1.3	0.3	0.0	0.0	0.0	0.0	0.8	0.0	0.3	0.8	0.0
Mali	2.3	0.0	2.0	0.0	0.0	0.0	0.0	0.0	0.6	1.0	2.3	4.2	2.6	1.0	4.0	12.3	12.5	8.5	16.8
Mauritania	...	...	...	...	...	...	...	...	...	0.0	1.3	1.5	1.3	0.8	2.5	2.5	0.5	1.3	0.8
Mauritius	0.0	0.0	1.0	0.0	0.0	0.0	0.0	0.5	0.3	0.0	0.0	0.0	0.0	0.0	0.3	0.0	0.0	0.0	0.0
Morocco	0.0	0.0	0.0	0.0	0.0	0.0	0.0	0.5	0.3	0.0	1.3	1.0	0.0	0.0	2.5	2.0	2.8	3.5	0.8



Table 23. Violence by non-state actors (cont.)

	1997	1998	1999	2000	2001	2002	2003	2004	2005	2006	2007	2008	2009	2010	2011	2012	2013	2014	2015
Mozambique	0.0	0.0	0.3	1.5	0.0	0.0	0.8	1.0	0.3	0.0	0.0	0.8	0.3	0.8	0.0	4.0	5.0	0.8	2.0
Namibia	0.0	0.0	2.0	1.0	0.0	0.0	0.0	0.0	0.0	0.0	0.0	0.0	0.3	0.0	0.3	0.0	0.0	0.3	0.0
Niger	...	...	...	...	...	...	...	1.0	0.3	0.3	7.3	5.5	2.8	0.3	3.3	0.5	2.3	1.8	9.5
Nigeria	16.6	5.7	16.0	12.4	12.7	6.4	6.0	11.3	0.8	16.4	22.5	12.9	13.8	12.5	31.5	34.8	30.5	36.5	37.8
Rwanda	...	...	...	...	...	...	...	0.0	0.0	0.0	0.3	0.5	0.8	1.0	1.5	5.0	2.0	0.0	0.0
Sao Tome and Principe	...	...	...	...	...	...	...	...	...	0.0	0.0	0.0	0.0	0.0	0.0	0.0	0.0	0.0	0.0
Senegal	4.2	0.6	1.4	1.6	1.4	2.2	1.9	2.1	0.3	1.9	1.9	0.3	4.1	4.8	7.5	6.0	2.0	0.3	0.3
Seychelles	...	...	...	...	...	...	...	...	...	0.0	0.0	0.0	0.3	0.0	0.0	0.0	0.0	0.0	0.0
Sierra Leone	...	...	...	...	...	...	...	...	...	0.0	0.5	0.0	1.5	0.0	0.5	0.8	0.3	0.3	0.0
Somalia	...	...	...	...	...	...	...	...	...	...	...	...	...	...	...	...	20.3	16.5	14.5
South Africa	7.0	4.5	8.3	4.5	0.0	0.5	0.3	2.0	0.3	0.5	0.0	4.3	4.3	0.5	4.3	8.3	8.3	3.5	5.3
South Sudan	...	...	...	...	...	...	...	...	...	...	...	...	...	...	16.0	8.3	8.0	4.8	2.8
Sudan	...	...	...	...	...	...	...	...	...	8.8	9.5	9.5	24.0	18.3	17.5	15.0	18.5	10.8	3.8
Swaziland	...	...	...	...	...	...	...	...	...	0.5	0.0	0.0	0.5	0.0	0.5	0.3	0.0	0.0	0.0
Tanzania	0.5	0.0	0.0	0.0	1.0	0.0	0.0	0.0	1.3	0.0	0.0	0.0	0.0	0.0	2.0	1.8	2.5	0.3	0.3
Togo	0.0	0.5	0.0	0.8	0.0	0.0	0.5	0.0	2.8	0.0	0.0	0.0	0.8	0.0	1.0	0.0	0.3	0.0	1.0
Tunisia	0.0	0.0	0.5	0.0	0.0	0.8	0.0	0.0	0.3	0.0	0.0	0.3	0.3	0.0	7.0	11.5	10.3	8.8	8.3
Uganda	4.0	2.8	2.5	0.0	6.3	3.8	4.5	10.3	1.8	3.8	2.5	1.8	3.5	0.0	2.8	1.0	0.0	0.5	0.5
Zambia	0.8	0.5	0.5	0.0	2.8	0.0	0.8	0.0	0.3	0.5	0.0	0.3	0.0	0.0	1.3	0.5	1.0	0.0	0.0
Zimbabwe	1.5	1.0	0.0	3.8	3.0	3.8	0.3	0.8	0.8	0.0	0.0	8.0	0.8	0.8	2.3	0.0	1.0	0.0	0.3

Note: The change in the source might affect the comparability of the 2006 indicator to its historical values. The indicators presented in the tables have been adjusted accordingly. For more details about the sources and computation, see note on methodology.

Sources: Authors' calculations based on news verified by the press agencies (Marchés Tropicaux et Méditerranéens for 1996-2005, AFP and Reuters for 2006 onwards).

Table 24. Political hardening

	1997	1998	1999	2000	2001	2002	2003	2004	2005	2006	2007	2008	2009	2010	2011	2012	2013	2014	2015
Algeria	7.0	6.5	6.1	5.6	7.4	9.0	6.5	7.5	5.5	4.6	6.1	6.8	5.1	1.8	4.7	3.4	4.2	3.2	1.7
Angola	...	...	...	...	...	...	...	1.4	0.1	0.5	0.2	0.8	0.4	0.7	2.9	1.1	2.1	0.3	1.6
Benin	0.0	0.0	0.0	0.0	0.0	0.0	0.0	0.1	0.1	0.3	0.1	0.5	0.1	0.2	0.4	0.1	0.4	0.0	0.4
Botswana	0.1	0.0	0.2	0.0	0.0	0.0	0.0	0.3	0.1	0.0	0.0	0.0	0.0	0.0	0.1	0.0	0.2	0.0	0.0
Burkina Faso	0.5	0.2	1.2	0.4	0.3	0.7	0.6	0.7	0.2	0.2	0.1	0.8	0.3	0.1	2.1	0.1	0.5	0.8	0.4
Burundi	...	...	...	...	...	...	...	...	...	3.6	1.4	1.2	1.8	2.5	1.9	0.8	1.6	1.5	5.7
Cabo Verde	0.0	0.0	0.0	0.0	0.0	0.0	0.0	0.0	0.0	0.0	0.3	0.2	0.0	0.0	0.0	0.0	0.0	0.0	0.0
Cameroon	2.3	1.3	1.3	1.1	1.7	1.1	1.4	1.5	0.9	1.9	1.2	1.6	1.5	1.8	2.3	1.6	0.7	1.9	1.2
Central African Republic	...	...	...	...	...	...	...	...	...	4.2	0.8	0.5	1.7	1.9	0.8	1.5	0.4	1.7	0.3
Chad	0.3	0.3	0.0	0.3	0.6	0.4	1.6	0.2	1.7	4.3	2.2	5.7	1.2	0.8	1.7	0.4	1.5	0.2	1.4
Comoros	...	...	...	...	...	...	...	...	...	0.4	0.9	0.6	0.4	0.0	0.0	0.8	0.2	0.7	0.3
Congo	...	...	...	...	...	...	...	0.3	0.3	0.5	0.4	0.2	0.9	0.3	1.1	0.5	0.4	0.6	1.4
Congo, Dem. Rep.	...	...	...	...	...	...	...	6.9	8.1	10.5	8.9	4.0	4.7	5.0	1.7	1.1	2.5	3.8	3.9
Côte d'Ivoire	0.9	0.5	2.8	2.3	0.7	1.1	2.1	2.7	2.1	3.3	1.2	1.5	0.6	4.0	6.0	1.8	1.5	0.6	1.4
Djibouti	...	...	...	...	...	...	...	...	...	0.2	0.1	0.6	0.0	0.1	0.6	0.1	0.7	0.6	0.3
Egypt	5.3	4.9	4.1	5.4	4.6	6.4	4.8	4.6	6.4	5.7	7.1	7.9	4.7	5.4	8.7	7.5	16.5	10.4	7.9
Equatorial Guinea	0.3	1.3	0.0	0.0	0.2	1.5	0.2	2.1	0.0	0.5	0.3	0.5	0.8	0.5	1.2	1.2	0.3	0.1	0.1
Eritrea	...	...	...	...	...	...	...	...	...	...	...	...	...	...	0.3	0.0	0.5	0.0	0.0
Ethiopia	3.2	2.8	2.2	2.4	3.1	4.2	2.5	2.5	5.2	3.4	3.4	1.9	2.0	1.4	1.5	1.5	0.6	1.1	0.7
Gabon	1.4	0.3	0.7	0.2	0.1	0.3	0.5	1.0	2.1	0.7	0.5	0.2	1.3	0.9	1.0	2.6	0.7	1.1	0.5
Gambia	...	...	...	...	...	...	...	...	...	1.4	0.3	0.9	2.1	0.2	0.1	0.2	1.1	0.4	1.3
Ghana	0.2	0.6	0.6	0.0	0.2	0.3	0.0	0.1	0.0	0.0	0.0	0.1	0.0	0.2	0.1	0.7	0.1	0.0	0.0
Guinea	...	...	...	...	...	...	...	...	...	1.7	3.0	2.8	5.4	1.6	3.4	1.9	1.5	0.4	1.4
Guinea-Bissau	0.0	2.0	0.8	0.7	0.4	0.5	0.0	0.0	0.3	1.2	0.8	0.6	2.0	0.1	0.5	0.5	0.7	0.0	0.2
Kenya	2.7	0.9	0.0	0.0	0.2	0.3	0.5	0.6	0.7	1.8	2.6	7.4	0.4	0.0	0.5	1.0	0.9	3.3	1.7
Lesotho	...	...	...	...	...	...	...	...	...	0.1	0.3	0.0	0.0	0.0	0.0	0.0	0.0	0.0	0.0
Liberia	...	...	...	...	...	...	...	...	...	0.8	0.3	0.5	0.2	0.0	0.4	0.0	0.5	0.6	0.1
Libya	0.4	0.0	0.0	0.0	0.1	0.0	0.1	0.3	0.1	0.6	0.5	0.5	0.4	0.1	7.9	3.5	2.8	3.1	3.6
Madagascar	0.0	0.1	0.0	0.0	0.0	0.6	0.0	0.8	0.3	1.1	0.9	0.0	2.7	0.7	0.4	2.7	1.1	0.6	0.8
Malawi	0.5	0.3	0.0	0.0	0.4	0.2	0.2	0.2	0.8	0.3	0.3	0.3	0.6	0.5	1.2	0.0	0.3	0.1	0.2
Mali	1.3	0.0	0.1	0.3	0.3	0.1	0.3	0.1	0.0	0.4	0.5	1.9	1.2	0.1	0.3	4.7	6.1	1.6	1.7
Mauritania	...	...	...	...	...	...	...	...	...	1.3	1.1	9.0	1.3	0.6	1.9	1.5	0.7	0.6	0.5
Mauritius	0.0	0.0	0.1	0.0	0.0	0.0	0.6	0.1	0.2	0.0	0.0	0.0	0.0	0.0	0.0	0.0	0.0	0.0	0.0
Morocco	4.4	3.9	3.8	4.3	4.2	4.1	4.4	4.9	4.0	4.3	4.4	4.6	2.0	2.2	2.4	3.9	2.8	2.6	1.9

Table 24. Political hardening (cont.)

	1997	1998	1999	2000	2001	2002	2003	2004	2005	2006	2007	2008	2009	2010	2011	2012	2013	2014	2015	
Mozambique	0.2	0.6	0.3	0.9	0.3	0.0	0.1	0.4	0.0	0.0	0.0	0.4	0.5	0.9	0.1	0.4	3.0	0.3	0.3	
Namibia	0.1	0.0	0.3	0.4	0.1	0.1	0.2	0.1	0.0	0.0	0.0	0.0	0.1	0.0	0.0	0.0	0.0	0.1	0.0	0.0
Niger	...	...	...	...	...	...	...	0.4	0.8	1.3	1.4	2.2	3.9	0.7	0.5	0.0	0.3	1.7	2.2	2.2
Nigeria	4.2	3.4	3.1	3.1	2.7	2.6	2.9	5.0	2.7	4.6	3.7	4.3	2.9	0.6	3.2	8.3	5.2	2.2	2.9	2.9
Rwanda	...	...	...	...	...	...	...	1.1	0.1	0.1	0.1	0.2	0.2	0.6	0.7	0.6	0.1	1.4	0.3	0.3
Sao Tome and Principe	...	...	...	...	...	...	...	...	...	0.1	0.3	0.1	0.7	0.0	0.0	0.0	0.0	0.0	0.0	0.0
Senegal	2.0	1.9	1.3	1.2	1.7	1.5	1.6	1.5	1.9	1.5	2.6	1.8	1.2	1.4	1.3	3.5	0.8	0.6	0.6	0.6
Seychelles	...	...	...	...	...	...	...	...	...	0.4	0.0	0.0	0.4	0.0	0.0	0.0	0.0	0.0	0.0	0.0
Sierra Leone	...	...	...	...	...	...	...	...	...	0.4	0.6	0.2	1.0	0.2	0.4	0.8	0.6	0.3	0.2	0.2
Somalia	...	...	...	...	...	...	...	...	...	...	...	...	...	...	...	...	1.2	1.6	0.7	0.7
South Africa	3.6	1.5	1.1	0.5	0.3	0.5	0.4	1.0	1.1	0.5	1.2	1.5	1.6	0.4	0.3	7.1	4.5	1.1	0.9	0.9
South Sudan	...	...	...	...	...	...	...	...	...	...	...	...	...	...	2.5	1.3	0.9	0.7	0.8	0.8
Sudan	...	...	...	...	...	...	...	...	...	3.5	3.6	7.6	5.0	6.2	7.9	7.3	2.0	4.4	1.7	1.7
Swaziland	...	...	...	...	...	...	...	...	...	0.3	0.3	0.9	0.2	0.0	1.2	1.1	0.3	0.4	0.2	0.2
Tanzania	0.1	0.1	0.0	0.1	0.1	0.0	0.1	0.0	0.4	0.0	0.0	0.0	0.3	0.2	1.4	1.0	1.6	0.4	0.5	0.5
Togo	0.0	0.3	0.2	0.5	0.6	0.3	0.0	0.0	0.8	0.0	0.0	0.0	0.7	0.8	0.8	1.0	1.2	0.1	0.4	0.4
Tunisia	1.8	1.8	2.0	1.8	2.2	2.1	1.8	3.0	2.1	1.3	1.9	3.4	2.1	1.1	4.9	8.9	7.6	3.6	3.1	3.1
Uganda	0.4	0.6	0.7	0.4	1.9	0.8	1.4	3.5	1.1	3.3	2.0	0.9	3.0	0.9	2.3	2.3	1.5	1.8	1.1	1.1
Zambia	2.7	1.6	1.3	0.9	1.8	1.9	1.0	1.2	0.9	1.7	0.5	0.2	0.5	0.6	0.7	0.2	1.9	0.3	0.4	0.4
Zimbabwe	0.9	1.9	1.3	1.2	3.1	4.4	3.9	4.1	3.3	2.2	3.0	9.9	3.3	0.7	3.6	0.5	3.5	1.4	0.4	0.4

Note: The change in the source might affect the comparability of the 2006 indicator to its historical values. The indicators presented in the tables have been adjusted accordingly. For more details about the sources and computation, see note on methodology.

Sources: Authors' calculations based on news verified by the press agencies (*Marchés Tropicaux et Méditerranéens* for 1996-2005, AFP and Reuters for 2006 onwards).

Table 25. Demographic projections (all populations are in thousands)

	Population increase, 1980-2015	Projected population increase, 2015-50	Population increase, 2050/2015 ratio	Active population increase, 2015-30	Yearly cohort of new labour entrants, 2015	Yearly cohort of new labour entrants, 2030	Total entrance inflow, 2015-30	Activity ratio, 2015	Activity ratio, 2050	Urban population, 2015	Projected urban population increase, 2015-50	Projected rural population increase, 2015-50
Algeria	20 329	16 795	1.4	5 953	660	831	10 756	1.9	1.7	28 739	16 048	-2 159
Angola	16 810	40 451	2.6	8 463	487	807	10 283	1.0	1.4	10 052	24 624	6 881
Benin	7 162	11 669	2.1	3 240	217	310	4 240	1.2	1.7	4 782	8 792	2 465
Botswana	1 266	1 126	1.5	438	44	50	733	1.8	2.1	1 181	761	-37
Burkina Faso	11 283	24 683	2.4	5 914	361	562	7 368	1.1	1.6	5 349	15 950	7 068
Burundi	7 052	17 489	2.6	3 593	215	352	4 319	1.1	1.4	1 304	5 721	10 157
Cabo Verde	235	186	1.4	80	11	10	164	1.9	2.1	333	160	-33
Cameroon	14 412	25 018	2.1	6 687	473	669	9 094	1.2	1.7	12 721	21 281	3 925
Central African Republic	2 626	3 881	1.8	1 173	101	125	1 807	1.3	1.9	1 923	2 908	780
Chad	9 525	21 093	2.5	4 818	284	454	5 877	1.0	1.5	3 057	9 385	10 526
Comoros	480	714	1.9	206	16	21	292	1.3	1.8	218	358	380
Congo	2 819	6 111	2.3	1 391	86	137	1 760	1.2	1.5	3 054	5 114	791
Congo, Dem. Rep.	50 909	118 010	2.5	26 356	1 504	2 442	31 340	1.0	1.5	30 275	63 589	20 456
Côte d'Ivoire	14 436	26 095	2.1	5 930	460	631	8 715	1.2	1.6	11 538	18 459	2 585
Djibouti	529	298	1.3	137	18	19	288	1.7	2.1	696	333	12
Egypt	48 139	59 603	1.7	18 145	1 584	2 141	28 372	1.6	1.8	36 538	32 326	4 766
Equatorial Guinea	624	971	2.1	236	16	23	310	1.4	1.8	319	508	316
Eritrea	2 844	5 194	2.0	1 633	100	154	2 039	1.2	1.8	1 525	4 504	3 072
Ethiopia	64 151	89 064	1.9	30 603	2 145	2 746	39 956	1.2	2.0	19 266	51 256	37 375
Gabon	996	1 438	1.8	441	34	44	614	1.4	1.9	1 526	1 478	73
Gambia	1 387	2 990	2.5	675	39	64	814	1.1	1.5	1 175	2 294	602
Ghana	16 608	22 661	1.8	6 834	533	725	9 868	1.4	1.8	14 583	17 610	1 076
Guinea	8 102	14 878	2.2	3 737	250	366	4 897	1.2	1.7	4 589	9 175	2 943
Guinea-Bissau	994	1 720	1.9	477	37	50	685	1.3	1.7	882	1 386	330
Kenya	29 782	49 454	2.1	13 723	896	1 320	17 707	1.2	1.7	11 978	30 658	19 766
Lesotho	828	852	1.4	283	49	50	772	1.5	2.1	579	737	-39
Liberia	2 611	4 932	2.1	1 318	87	128	1 742	1.2	1.7	2 238	3 883	1 005
Libya	3 087	2 097	1.3	1 092	100	129	1 839	1.9	1.9	4 962	2 193	-160
Madagascar	15 489	31 058	2.3	7 449	498	694	9 529	1.2	1.6	8 508	22 011	9 251
Malawi	11 052	25 939	2.5	6 078	355	543	7 081	1.1	1.6	2 816	9 621	14 273
Mali	10 510	27 804	2.6	6 024	338	578	7 242	1.0	1.5	6 490	20 744	8 166
Mauritania	2 533	3 982	2.0	1 094	79	111	1 522	1.3	1.7	2 442	3 425	416

Table 25. Demographic projections (all populations are in thousands) (cont.)

	Population increase, 1980-2015	Projected population increase, 2015-50	Population 2050/2015 ratio	Active population increase, 2015-30	Yearly cohort of new labour entrants, 2015	Yearly cohort of new labour entrants, 2030	Total inflow, 2015-30	Activity ratio, 2015	Activity ratio, 2050	Urban population, 2015	Projected urban population increase, 2015-50	Projected rural population increase, 2015-50
Mauritius	307	-24	1.0	-27	20	15	290	2.5	1.6	497	73	-95
Morocco	14 306	9 319	1.3	3 350	608	625	9 400	2.0	1.8	20 439	11 281	-2 352
Mozambique	16 041	37 567	2.3	8 458	560	867	11 438	1.1	1.5	8 737	20 703	12 105
Namibia	1 446	1 863	1.8	574	52	62	887	1.5	1.9	1 116	1 422	-71
Niger	13 936	52 339	3.6	7 840	355	702	8 233	0.9	1.2	3 609	20 952	29 189
Nigeria	108 504	216 306	2.2	51 433	3 467	5 366	70 166	1.1	1.6	87 681	207 799	49 032
Rwanda	6 469	9 578	1.8	3 361	224	324	4 454	1.3	2.0	3 581	9 769	3 181
Sao Tome and Principe	95	163	1.9	50	4	5	73	1.2	1.7	132	161	24
Senegal	9 561	21 093	2.4	4 967	297	467	5 957	1.1	1.5	6 544	13 366	4 599
Seychelles	30	3	1.0	0	1	2	22	2.3	1.5	51	14	-8
Sierra Leone	3 367	4 939	1.8	1 655	129	178	2 479	1.2	1.9	2 524	3 369	608
Somalia	4 697	16 243	2.5	3 279	215	331	4 336	1.0	1.4	4 399	11 265	4 688
South Africa	25 413	11 049	1.2	4 721	1 054	1 061	16 637	1.9	2.2	34 663	14 440	-4 526
South Sudan	7 638	13 515	2.1	3 633	251	354	4 847	1.2	1.7	2 285	6 118	6 490
Sudan	25 817	40 049	2.0	11 407	802	1 096	15 320	1.3	1.8	13 391	24 996	12 529
Swaziland	684	505	1.4	177	30	32	477	1.4	2.1	274	249	281
Tanzania	34 786	83 665	2.6	18 067	1 026	1 695	21 436	1.1	1.5	16 528	52 041	25 086
Togo	4 584	8 376	2.1	2 194	142	211	2 813	1.2	1.7	2 866	5 538	1 812
Tunisia	4 885	2 222	1.2	683	176	182	2 693	2.2	1.7	7 510	2 599	-642
Uganda	26 485	62 841	2.6	14 432	792	1 285	16 523	1.0	1.5	6 463	26 903	37 033
Zambia	10 282	26 764	2.7	5 620	325	513	6 646	1.0	1.4	6 351	19 408	9 278
Zimbabwe	8 314	14 012	1.9	4 433	326	447	5 951	1.2	1.9	4 871	6 608	4 599
<b>AFRICA</b>	<b>708 213</b>	<b>1 291 358</b>	<b>2.1</b>	<b>324 750</b>	<b>22 962</b>	<b>33 140</b>	<b>443 568</b>	<b>1.2</b>	<b>1.6</b>	<b>471 602</b>	<b>866 964</b>	<b>359 972</b>

Sources: United Nations, Department of Economic and Social Affairs, Population Division, World Population Prospects: The 2015 Edition; World Urbanization Prospects: The 2014 Revisions; FAO STAT.

Table 26. Gender indicators

	Africa Gender Equality Index 2015 <sup>1</sup>				Social Institutions and Gender Index (SIGI), 2014 <sup>2</sup>							Gender Inequality Index (GII), 2014 <sup>3</sup>	Gender Development Index (GDI), 2014 <sup>4</sup>
	Overall score	Economic opportunities	Human development	Laws and Institutions	Overall score	Discriminatory family code	Restricted physical integrity	Son bias	Restricted resources and assets	Restricted civil liberties	Overall score	Overall score	
Algeria	58	42	89	42	...	...	...	...	...	41	84		
Angola	53	55	41	64	17	46	50	8	59	20	...		
Benin	52	62	47	47	28	28	44	37	59	80	82		
Botswana	69	76	91	41	...	...	...	...	...	48	98		
Burkina Faso	57	63	60	46	28	54	73	19	59	45	88		
Burundi	64	69	61	63	17	56	51	17	41	26	91		
Cabo Verde	67	55	88	57	...	...	...	...	...	...	...		
Cameroon	47	54	65	22	28	50	53	21	79	45	88		
Central African Republic	47	77	33	31	33	53	61	1	59	80	77		
Chad	42	71	24	32	47	97	82	0	59	61	77		
Comoros	44	47	72	13	...	...	...	...	...	...	81		
Congo	49	40	77	31	20	51	47	0	41	61	92		
Congo, Dem. Rep.	49	75	51	22	43	52	53	7	96	81	83		
Côte d'Ivoire	44	34	57	40	25	50	59	19	59	54	81		
Djibouti	41	52	67	5	...	...	...	...	...	...	...		
Egypt	49	47	85	16	43	67	74	37	59	81	87		
Equatorial Guinea	49	50	68	31	...	...	...	...	...	...	...		
Eritrea	53	61	48	50	...	...	...	...	...	...	...		
Ethiopia	51	68	33	52	25	28	87	9	59	20	84		
Gabon	52	60	75	22	40	65	53	17	79	81	...		
Gambia	55	78	66	21	52	51	85	0	100	80	89		
Ghana	62	68	67	52	30	39	55	31	80	54	89		
Guinea	40	45	40	35	32	54	95	23	39	45	78		
Guinea-Bissau	48	57	58	29	21	41	49	7	59	54	...		
Kenya	63	63	69	58	22	35	61	44	59	20	91		
Lesotho	70	71	81	58	9	43	41	21	20	0	95		
Liberia	48	53	48	45	38	57	89	2	41	80	79		
Libya	38	12	90	13	...	...	...	...	...	13	95		
Madagascar	65	61	75	59	10	49	31	0	20	35	95		

Table 26. Gender indicators (cont.)

	Africa Gender Equality Index 2015 <sup>1</sup>				Social Institutions and Gender Index (SIGI), 2014 <sup>2</sup>							Gender Inequality Index (GII), 2014 <sup>3</sup>	Gender Development Index (GDI), 2014 <sup>4</sup>
	Overall score	Economic opportunities	Human development	Laws and Institutions	Overall score	Discriminatory family code	Restricted physical integrity	Son bias	Restricted resources and assets	Restricted civil liberties	Overall score	Overall score	
Malawi	73	89	69	61	21	40	36	17	59	61	61	91	
Mali	33	32	47	21	52	83	100	30	41	80	68	78	
Mauritania	42	53	59	14	40	76	99	17	59	20	61	82	
Mauritius	73	53	98	69	...	...	...	...	...	...	42	95	
Morocco	53	38	79	42	11	46	32	16	39	20	53	83	
Mozambique	62	67	58	60	14	42	38	0	41	45	59	88	
Namibia	73	65	90	66	12	17	35	7	59	28	40	98	
Niger	42	51	42	35	44	100	41	17	59	81	71	73	
Nigeria	55	66	59	39	39	67	48	25	76	80	...	84	
Rwanda	74	75	79	68	13	26	41	14	59	26	40	96	
Sao Tome and Principe	50	60	76	14	...	...	...	...	...	...	...	89	
Senegal	52	51	65	40	20	59	63	9	41	26	53	88	
Seychelles	...	...	...	...	...	...	...	...	...	...	...	...	
Sierra Leone	58	71	43	59	37	33	85	4	80	61	65	81	
Somalia	16	27	9	12	46	60	99	9	76	61	...	...	
South Africa	75	63	92	68	6	2	22	22	41	20	41	95	
South Sudan	...	...	...	...	...	...	...	...	...	...	...	...	
Sudan	32	46	43	6	56	84	98	14	82	66	59	83	
Swaziland	58	65	86	24	21	49	31	0	59	61	56	88	
Tanzania	64	73	65	54	25	72	54	17	59	26	55	94	
Togo	50	61	41	47	19	37	55	13	59	35	59	83	
Tunisia	60	54	94	34	20	43	16	48	59	45	24	89	
Uganda	63	74	58	58	22	51	56	30	59	26	54	89	
Zambia	58	67	63	45	45	51	56	17	100	80	59	92	
Zimbabwe	69	71	77	59	14	57	34	30	41	0	50	92	

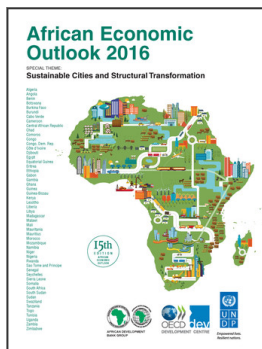
Notes: 1. The AfDB GEI scores countries on a scale from 0 to 100, where 100 indicates perfect gender equality.

2. The SIGI and its sub-indices are between 0 and 100, with 0 indicating very low levels of discrimination and 100 indicating very high levels of discrimination.

3. The higher the GI value the more disparities there are between females and males.

4. This is the ratio of the Human Development Index for females compared to that for males. The higher the index, the lower the difference in Human Development Scores between the genders.

Source: African Development Bank, *African Gender Equality Index 2015*; OECD, *Gender, Institutions and Development Database, 2015*; United Nations Development Programme, *Human Development Report, 2015*.



**From:**  
**African Economic Outlook 2016**  
Sustainable Cities and Structural Transformation

**Access the complete publication at:**  
<https://doi.org/10.1787/aeo-2016-en>

**Please cite this chapter as:**

African Development Bank/OECD/United Nations Development Programme (2016), "Statistical annex", in *African Economic Outlook 2016: Sustainable Cities and Structural Transformation*, OECD Publishing, Paris.

DOI: <https://doi.org/10.1787/aeo-2016-69-en>

This work is published under the responsibility of the Secretary-General of the OECD. The opinions expressed and arguments employed herein do not necessarily reflect the official views of OECD member countries.

This document and any map included herein are without prejudice to the status of or sovereignty over any territory, to the delimitation of international frontiers and boundaries and to the name of any territory, city or area.

You can copy, download or print OECD content for your own use, and you can include excerpts from OECD publications, databases and multimedia products in your own documents, presentations, blogs, websites and teaching materials, provided that suitable acknowledgment of OECD as source and copyright owner is given. All requests for public or commercial use and translation rights should be submitted to [rights@oecd.org](mailto:rights@oecd.org). Requests for permission to photocopy portions of this material for public or commercial use shall be addressed directly to the Copyright Clearance Center (CCC) at [info@copyright.com](mailto:info@copyright.com) or the Centre français d'exploitation du droit de copie (CFC) at [contact@cfcopies.com](mailto:contact@cfcopies.com).